

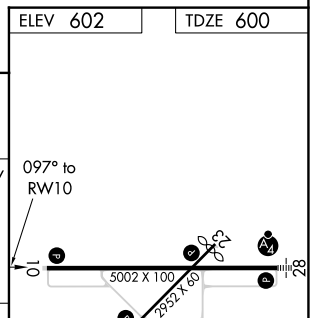
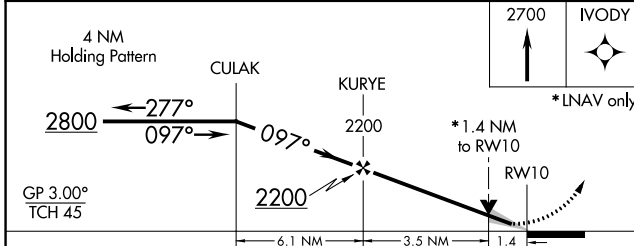
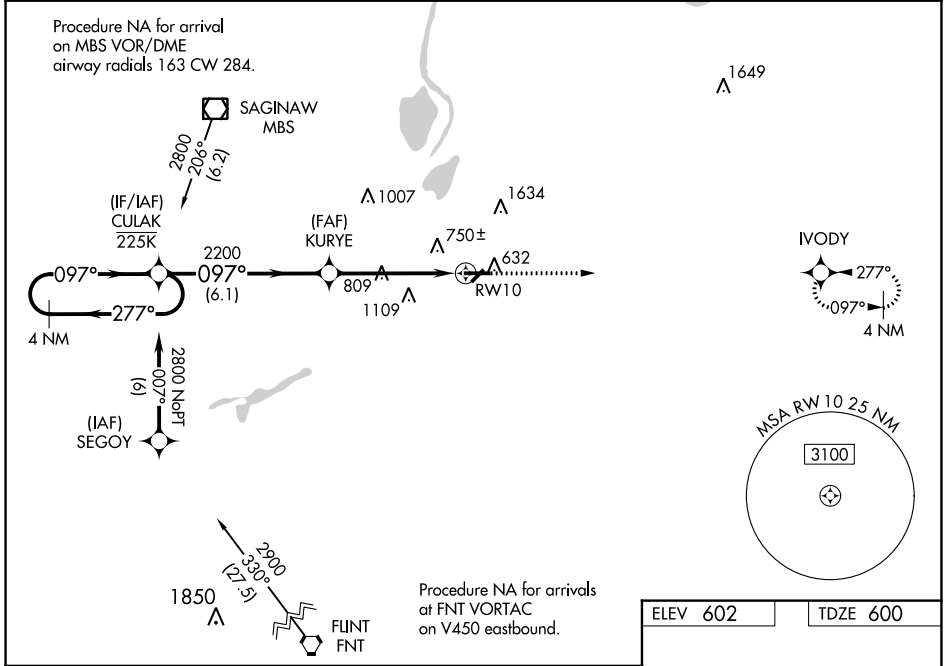
WAAS CH <b>50200</b> <b>W10A</b>	APP CRS <b>097°</b>	Rwy Idg TDZE Apt Elev	<b>5002</b> <b>600</b> <b>602</b>
--	------------------------	-----------------------------	---

# RNAV (GPS) RWY 10

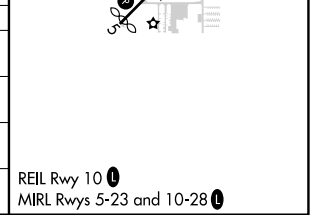
SAGINAW COUNTY H W BROWNE (HYX)

RNP APCH.	MISSED APPROACH: Climb to 2700 direct IVODY and hold.
<p><b>T</b> For uncompensated Baro-VNAV systems, LNAV/VNAV NA below -18°C or above 54°C. Circling NA for Cat C north of Rwy 10-28.  <b>A</b> Circling Rwy 5, 23 NA at night.</p>	

AWOS-3 <b>118.325</b>	GREAT LAKES APP CON★ <b>120.95 235.625</b>	UNICOM <b>122.8 (CTAF) 0</b>
--------------------------	---	---------------------------------



CATEGORY	A	B	C	D
LPV DA	800-3/4	200 (200-3/4)		NA
LNAV/VNAV DA	1018-13/8	418 (500-13/8)		NA
LNAV MDA	1060-1	460 (500-1)	1060-13/8 460 (500-13/8)	NA
<b>C</b> CIRCLING	1100-1	498 (500-1)	1460-21/2 858 (900-21/2)	NA



EC-1, 25 FEB 2021 to 25 MAR 2021

EC-1, 25 FEB 2021 to 25 MAR 2021