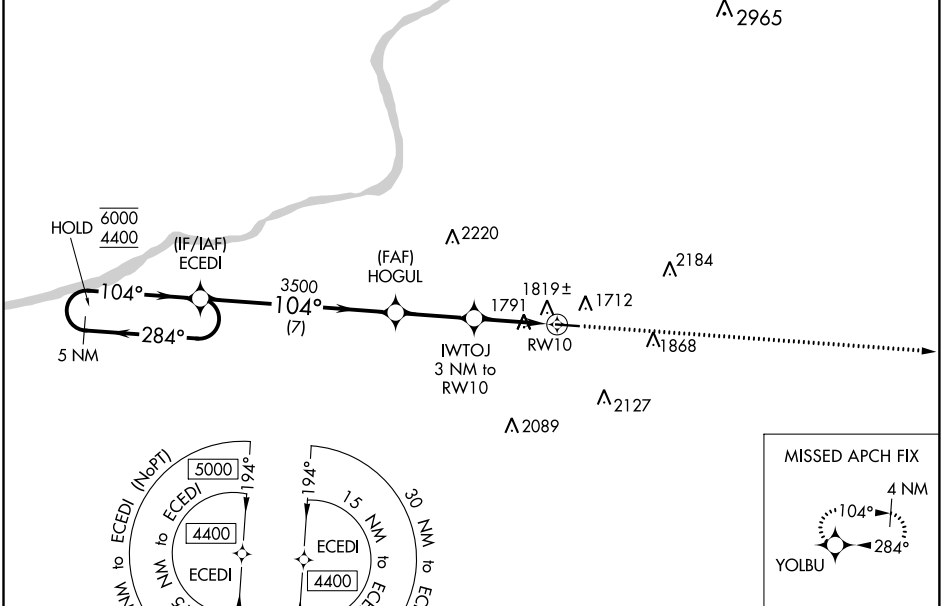


WAAS CH <b>86240</b> <b>W10A</b>	APP CRS <b>104°</b>	Rwy Idg TDZE Apt Elev	<b>4801</b> <b>1603</b> <b>1603</b>
----------------------------------------	------------------------	-----------------------------	-------------------------------------------

# RNAV (GPS) RWY 10

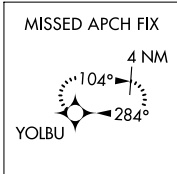
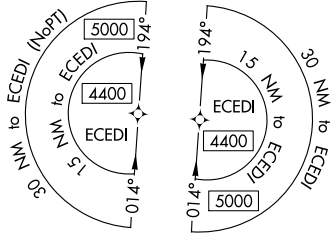
HAZLETON RGNL (HZZ)

RNP APCH.		MISSED APPROACH: Climb to 4600 direct YOLBU and hold.	
▼ ▲ Rwy 10 helicopter visibility reduction below 3/4 SM NA. For uncompensated Baro-VNAV systems, LNAV/VNAV NA below -18°C or above 54°C.		AWOS-3 <b>119.975</b>	WILKES-BARRE APP CON <b>126.3 256.7</b>
		CLNC DEL <b>121.7</b>	UNICOM <b>123.0 (CTAF) 0</b>

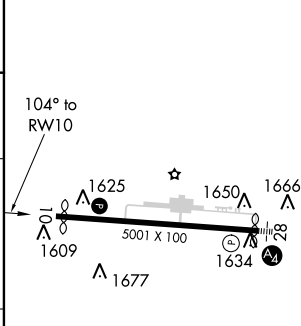
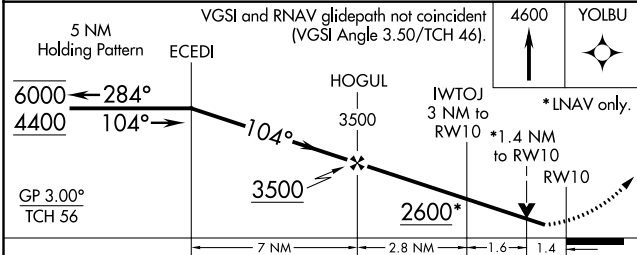


NE-4, 25 FEB 2021 to 25 MAR 2021

NE-4, 25 FEB 2021 to 25 MAR 2021



ELEV 1603	<b>D</b>	TDZE 1603
-----------	----------	-----------



CATEGORY	A	B	C	D
LPV DA		2059-1 <sup>3</sup> / <sub>8</sub>	456 (500-1 <sup>3</sup> / <sub>8</sub> )	
LNAV/VNAV DA		2097-1 <sup>3</sup> / <sub>8</sub>	494 (500-1 <sup>3</sup> / <sub>8</sub> )	
LNAV MDA	2080-1	477 (500-1)	2080-1 <sup>3</sup> / <sub>8</sub>	477 (500-1 <sup>3</sup> / <sub>8</sub> )
◻ CIRCLING	2140-1 537 (600-1)	2400-1 797 (800-1)	2480-2 <sup>1</sup> / <sub>2</sub> 877 (900-2 <sup>1</sup> / <sub>2</sub> )	2520-3 917 (1000-3)

REIL Rwy 10 0	MIRL Rwy 10-28 0
---------------	------------------