

WAAS CH 42607 W36A	APP CRS 004°	Rwy Idg TDZE Apt Elev	5003 36 39
--	------------------------	-----------------------------	---------------------------------------

RNAV (GPS) RWY 36

FALSE RIVER RGNL (H.Z.R.)

RNP APCH.

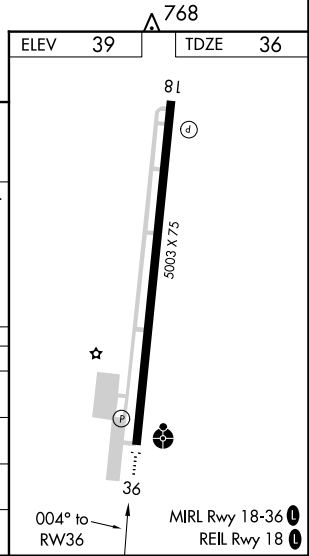
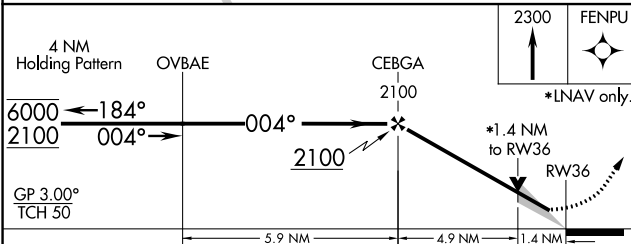
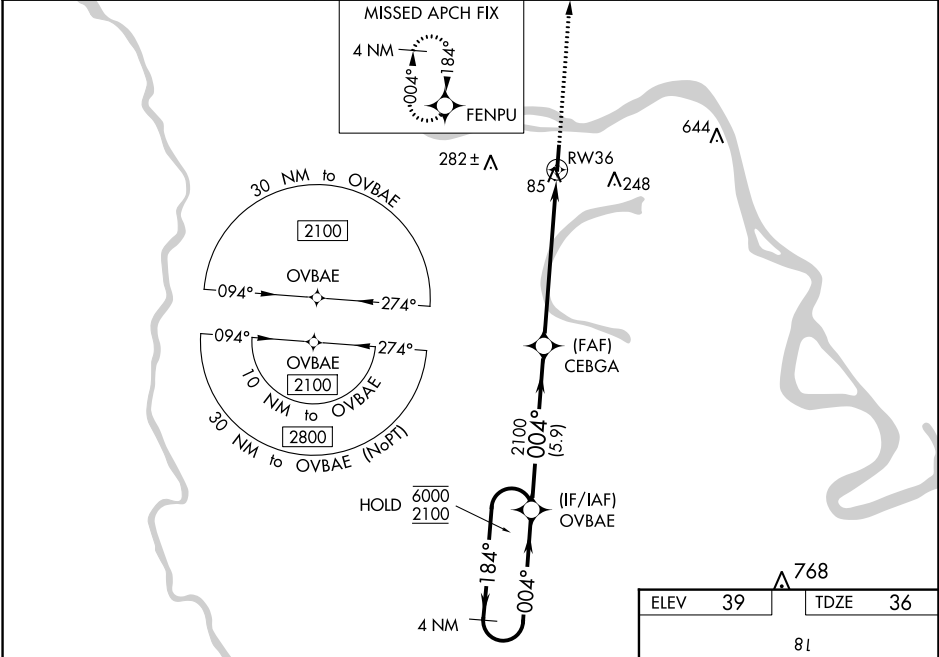
▼ For uncompensated Baro-VNAV systems, LNAV/VNAV NA below -15°C or above 54°C. Baro-VNAV and VDP NA when using Baton Rouge altimeter setting. When local altimeter setting not received, use Baton Rouge altimeter setting and increase all DA 51 feet and all visibility $\frac{1}{8}$ SM; increase all MDA 60 feet, and LNAV Cat C/D visibility $\frac{1}{8}$ SM and Circling Cat C visibility $\frac{1}{4}$ SM. For inop ALS, increase LNAV/VNAV Cats A/B visibility to $\frac{7}{8}$ mile. For inop ALS when using Baton Rouge altimeter setting, increase LNAV/VNAV visibility to 1 SM and LNAV Cat C/D visibility to $\frac{1}{8}$ SM.

ODALS



MISSED APPROACH:
Climb to 2300 direct FENPU and hold.

AWOS-3PT 121.250	BATON ROUGE APP CON* 120.3 278.3	UNICOM 122.8 (CTAF)
----------------------------	--	-------------------------------



CATEGORY	A	B	C	D
LPV DA		286- $\frac{3}{4}$	250 (300- $\frac{3}{4}$)	
LNAV/VNAV DA		307- $\frac{3}{4}$	271 (300- $\frac{3}{4}$)	
LNAV MDA	520- $\frac{3}{4}$ 484 (500- $\frac{3}{4}$)	520-1 484 (500-1)	520-1 $\frac{1}{4}$ 484 (500-1 $\frac{1}{4}$)	484 (500-1 $\frac{1}{4}$)
CIRCLING	520-1 481 (600-1)		600-1 $\frac{1}{2}$ 561 (600-1 $\frac{1}{2}$)	600-2 561 (600-2)

SC-4, 25 FEB 2021 to 25 MAR 2021

SC-4, 25 FEB 2021 to 25 MAR 2021