

WICHITA, KANSAS

RNAV (GPS) RWY 19L

APCH CRS	Rwy Idg	12,007
192°	TDZE	1365
	Arprt Elev	1372

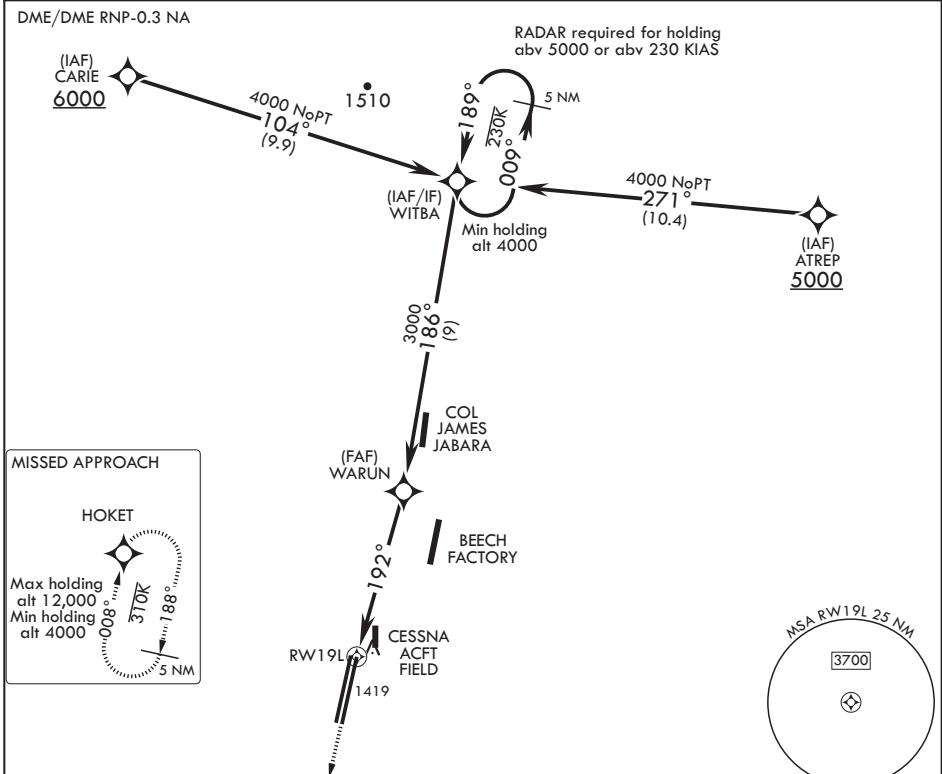
AL-453 (USAF)

MC CONNELL AFB (KIAB)

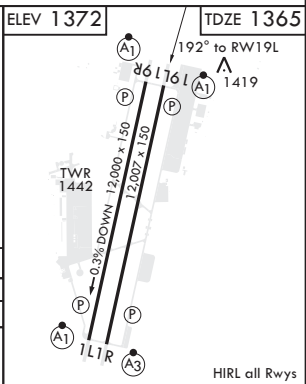
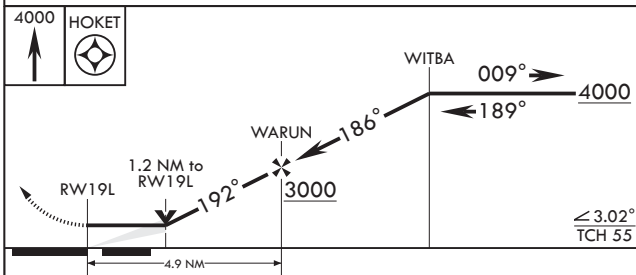
⚠ * When ALS inop, increase CAT AB RVR to 55, vis to 1 mile; CAT CDE vis to 1 1/4 miles.
 ** Circling NA west of Rwy 1L-19R.

ALS-1  MISSED APPROACH: Climbing left turn to 4000 direct HOKET and hold.

D ATIS 124.65 269.9	WICHITA APP CON 134.8 269.1	TOWER 127.25 291.775	GND CON 118.0 275.8
-------------------------------	---------------------------------------	--------------------------------	-------------------------------



EMERG SAFE ALT 100 NM 4100



CATEGORY	A	B	C	D	E
LNAV MDA*	1800/40		435	(500-3/4)	
C CIRCLING**	1900-1 528 (600-1)		1900-1 1/2 528 (600-1 1/2)	2400-3 1028 (1100-3)	

WICHITA, KANSAS
 Amdt 5 10SEP20

37°37'N - 97°16'W

MC CONNELL AFB (KIAB)

RNAV (GPS) RWY 19L

NC-2, 25 FEB 2021 to 25 MAR 2021

NC-2, 25 FEB 2021 to 25 MAR 2021