

WAAS CH <b>99432</b> <b>W28B</b>	APP CRS <b>280°</b>	Rwy ldg <b>9129</b> TDZE <b>588</b> Apt Elev <b>592</b>
--	------------------------	---

# RNAV (GPS) RWY 28R

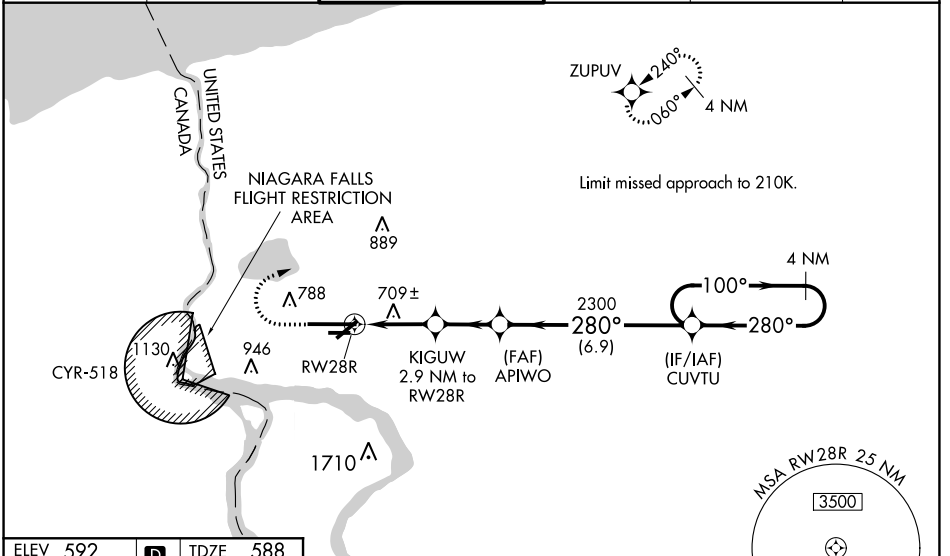
NIAGARA FALLS INTL (IAG)

**⚠** For uncompensated Baro-VNAV systems, LNAV/VNAV NA below -18°C (0°F) or above 54°C (130°F). DME/DME RNP-0.3 NA. When local altimeter setting not received, use Buffalo Niagara Intl altimeter setting and increase all DA 51 feet and all MDA 60 feet; increase LNAV/VNAV all Cats visibility  $\frac{1}{8}$  SM and Circling Cat C and D  $\frac{1}{4}$  SM. Baro-VNAV and VDP NA with Buffalo Niagara Intl altimeter setting. For inop MALSAR increase LNAV/VNAV visibility all Cats to RVR 6000 and LNAV all Cats visibility to RVR 5500. For inop MALSAR when using Buffalo Niagara Intl altimeter setting, increase LPV all Cats and LNAV Cats C/D visibility to RVR 5500 and LNAV/VNAV all Cats visibility to RVR 6000. Rwy 28R helicopter visibility reduction below  $\frac{3}{4}$  SM NA. Rwy 6, 10R, 24, 28L, helicopter visibility reduction below 1 SM NA. Circling Rwy 6, 10R, 24, 28L, NA at night.

MALSAR

MISSED APPROACH:  
Climb to 1040 then climbing right turn to 3600 direct ZUPUV and hold, continue climb-in-hold to 3600.

ATIS <b>120.8 269.4</b>	BUFFALO APP CON <b>126.5 317.6</b>	NIAGARA TOWER* <b>118.5 (CTAF) 0 349.0</b>	GND CON <b>125.3 275.8</b>	CLNC DEL <b>119.25 251.1</b>	UNICOM <b>122.95</b>
----------------------------	---------------------------------------	---	-------------------------------	---------------------------------	-------------------------



NE-2, 25 FEB 2021 to 25 MAR 2021

NE-2, 25 FEB 2021 to 25 MAR 2021

ELEV 592 TDZE 588

TDZ/CL Rwy 28R  
REIL Rws 6, 10R, 24, and 28L  
HIRL Rwy 10L-28R  
MIRL Rws 6-24 and 10R-28L

## RADAR REQUIRED

1040 3600 ZUPUV VGSi and RNAV glidepath not coincident (VGSi Angle 2.50/TCH 67). 4 NM Holding Pattern

\*LNAV only. \*1 NM to RWY 28R 2.9 NM to RWY 28R 1560\* 2300 280° 100° 3100 GP 3.00° TCH 55

CATEGORY	A	B	C	D
LPV DA	838/40 250 (300- $\frac{3}{4}$ )			
LNAV/VNAV DA	957/40 369 (400- $\frac{3}{4}$ )			
LNAV MDA	960/40 372 (400- $\frac{3}{4}$ )			
<b>C</b> CIRCLING	1100-1 508 (600-1)		1280-2 688 (700-2)	1280-2 $\frac{1}{4}$ 688 (700-2 $\frac{1}{4}$ )