

WAAS CH 90132 W06A	APP CRS 060°	Rwy ldg TDZE Apt Elev	5188 586 592
--	------------------------	-----------------------------	---

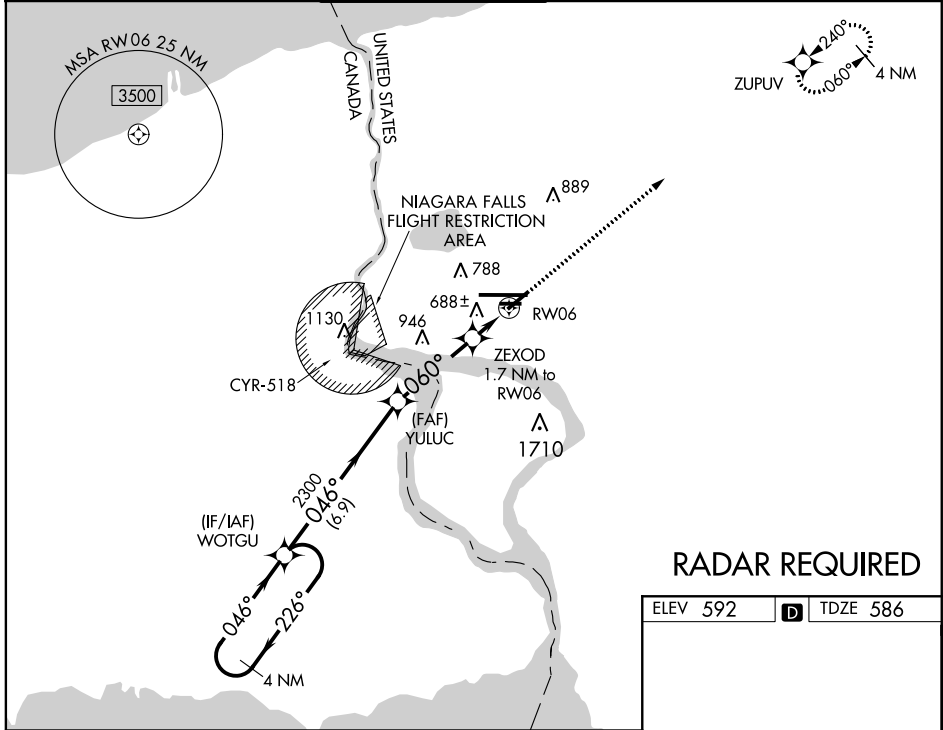
RNAV (GPS) RWY 6

NIAGARA FALLS INTL (IAG)

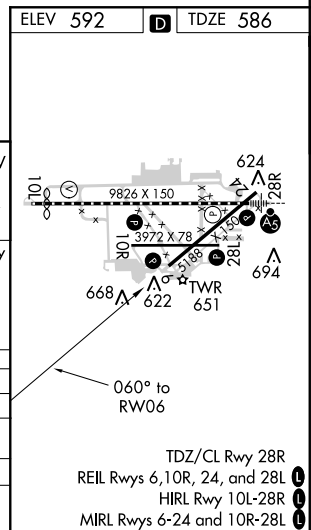
RNP APCH.
 Baro-VNAV NA when using Buffalo Niagara Intl altimeter setting. For uncompensated Baro-VNAV systems, LNAV/VNAV NA below -18°C (0°F) or above 54°C (130°F). When local altimeter setting not received, use Buffalo Niagara Intl altimeter setting and increase all DA 51 feet and all MDA 60 feet, increase LNAV Cat C and D visibility 1/8 SM and Circling Cat C and D 1/4 SM. Rwy 6, 10R, 24, 28L helicopter visibility reduction below 1 SM NA. Straight-in Rwy 6 NA at night, Circling Rwy 6, 10R, 24, 28L NA at night.

MISSED APPROACH:
 Climb to 3600 direct ZUPOV and hold.

ATIS 120.8 269.4	BUFFALO APP CON 126.5 317.6	NIAGARA TOWER* 118.5 (CTAF) 0 349.0	GND CON 125.3 275.8	CLNC DEL 119.25 251.1	UNICOM 122.95
----------------------------	---------------------------------------	---	-------------------------------	---------------------------------	-------------------------



RADAR REQUIRED



4 NM Holding Pattern	VGSi and RNAV glidepath not coincident (VGSi Angle 3.00/TCH 45).			3600 ZUPOV
GP 3.00° TCH 55	WOTGU	YULUC	ZEXOD 1.7 NM to RW06	*LNAV only
3300	2300	2300	1710	1710
← 226°	← 046°	← 046°	← 060°	← 060°
046°	046°	060°	060°	060°
6.9 NM	3.5 NM	1.7 NM	1.7 NM	
CATEGORY	A	B	C	D
LPV DA		864-1	278 (300-1)	
LNAV/VNAV DA		849-1	263 (300-1)	
LNAV MDA		940-1	354 (400-1)	
CIRCLING	1100-1	508 (600-1)	1280-2 688 (700-2)	1280-2 1/4 688 (700-2 1/4)

TDZ/CL Rwy 28R
 REIL Rws 6, 10R, 24, and 28L
 HIRL Rwy 10L-28R
 MIRL Rws 6-24 and 10R-28L

NE-2, 25 FEB 2021 to 25 MAR 2021

NE-2, 25 FEB 2021 to 25 MAR 2021