

WAAS CH 45532 W24A	APP CRS 240°	Rwy ldg TDZE Apt Elev	5108 592 592
--	------------------------	-----------------------------	---

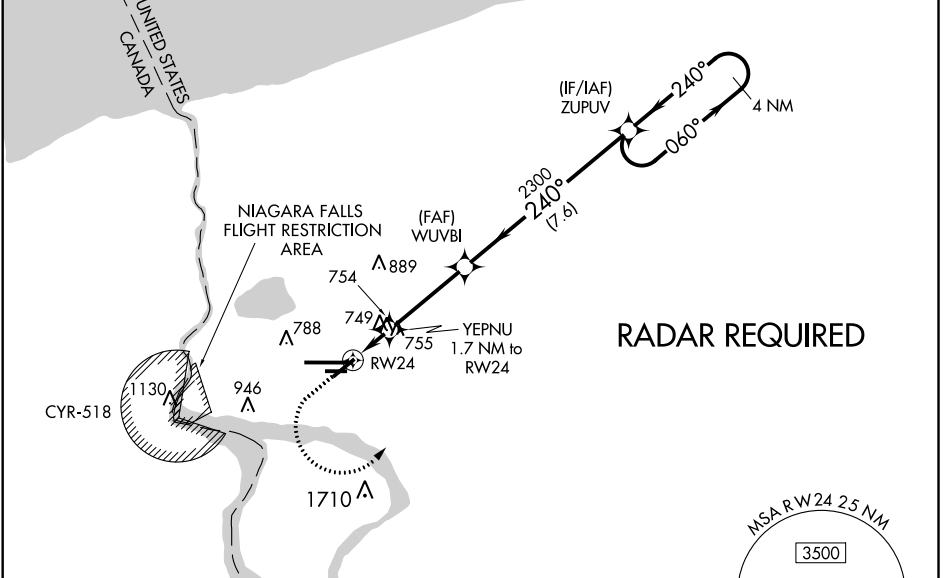
RNAV (GPS) Z RWY 24

NIAGARA FALLS INTL (IAG)

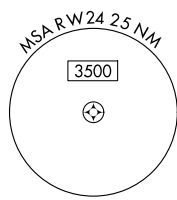
▼ DME/DME RNP-0.3 NA. When local altimeter setting not received, use Buffalo Niagara Intl altimeter setting and increase all MDA 60 feet; increase LP Cats C and D visibility 1/4 SM, LNAV Cats C and D visibility 1/4 SM, and Circling Cat C and D visibility 1/4 SM.
▲ Rwy 6, 10R, 24, 28L helicopter visibility reduction below 1 SM NA. Straight-in Rwy 24 NA at night, Circling Rwy 6, 10R, 24, 28L NA at night. *Missed approach requires a minimum climb of 265 feet per NM to 2120; if unable to meet climb gradient, see RNAV (GPS) Y RWY 24.

MISSED APPROACH: Climb to 1400 then climbing left turn to 3600 direct ZUPUV and hold.

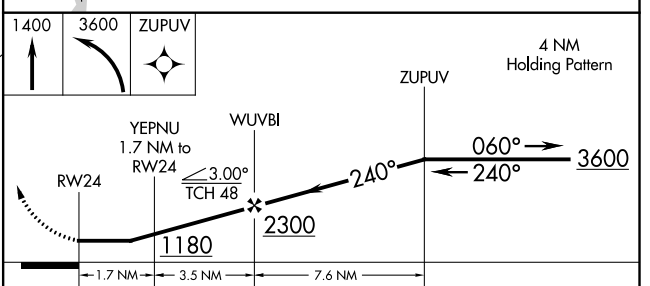
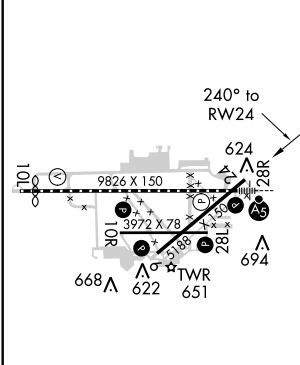
ATIS 120.8 269.4	BUFFALO APP CON 126.5 317.6	NIAGARA TOWER* 118.5 (CTAF) 0 349.0	GND CON 125.3 275.8	CLNC DEL 119.25 251.1	UNICOM 122.95
----------------------------	---------------------------------------	---	-------------------------------	---------------------------------	-------------------------



RADAR REQUIRED



ELEV 592	D	TDZE 592
----------	----------	----------



CATEGORY	A	B	C	D
LP MDA*	1000-1	408 (500-1)	1000-1 1/8	408 (500-1 1/8)
LNAV MDA*	1020-1	428 (500-1)	1020-1 1/4	428 (500-1 1/4)
C CIRCLING	1100-1	508 (600-1)	1280-2 688 (700-2)	1280-2 1/4 688 (700-2 1/4)

TDZ/CL Rwy 28R
 REIL Rws 6, 10R, 24, and 28L
 HIRL Rwy 10L-28R
 MIRL Rws 6-24 and 10R-28L

NE-2, 25 FEB 2021 to 25 MAR 2021

NE-2, 25 FEB 2021 to 25 MAR 2021