

APP CRS	Rwy Idg	<b>6301</b>
<b>146°</b>	TDZE	<b>1333</b>
	Apt Elev	<b>1333</b>

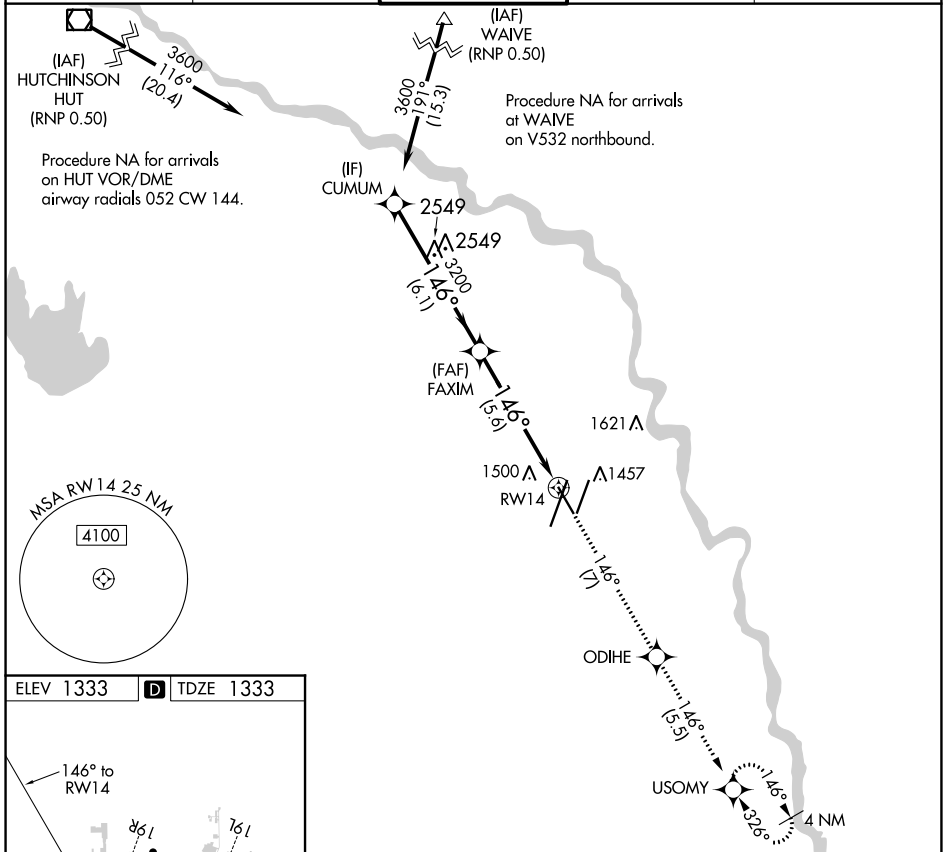
# RNAV (RNP) Z RWY 14

WICHITA DWIGHT D EISENHOWER NATIONAL (ICT)

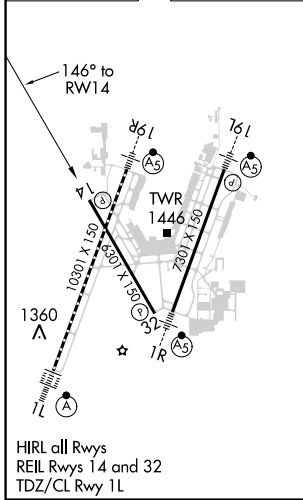
**▼** For uncompensated Baro-VNAV systems, procedure NA below -15°C ( 5°F) or above 54°C (130°F). GPS required.

MISSED APPROACH: Climb to 3600 on track 146° to ODIHE and on track 146° to USOMY and hold.

ATIS <b>125.15</b>	WICHITA APP CON <b>126.7 353.5</b>	WICHITA TOWER <b>118.2 257.8</b>	GND CON <b>121.9 348.6</b>	CLNC DEL <b>125.7</b>
-----------------------	---------------------------------------	-------------------------------------	-------------------------------	--------------------------



ELEV 1333	<b>D</b>	TDZE 1333
-----------	----------	-----------



VGS1 and RNAV glidepath not coincident (VGS1 Angle 3.00/TCH 50).		3600 ↑ tr 146°	ODIHE	tr 146°	USOMY
GP 3.00° TCH 50					
CATEGORY	A	B	C	D	
RNP 0.11 DA	1682-1 1/8		349 (400-1 1/8)		
RNP 0.30 DA	1732-1 1/8		399 (400-1 1/8)		
<b>AUTHORIZATION REQUIRED</b>					

NC-2, 25 FEB 2021 to 25 MAR 2021

NC-2, 25 FEB 2021 to 25 MAR 2021