

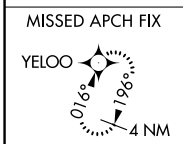
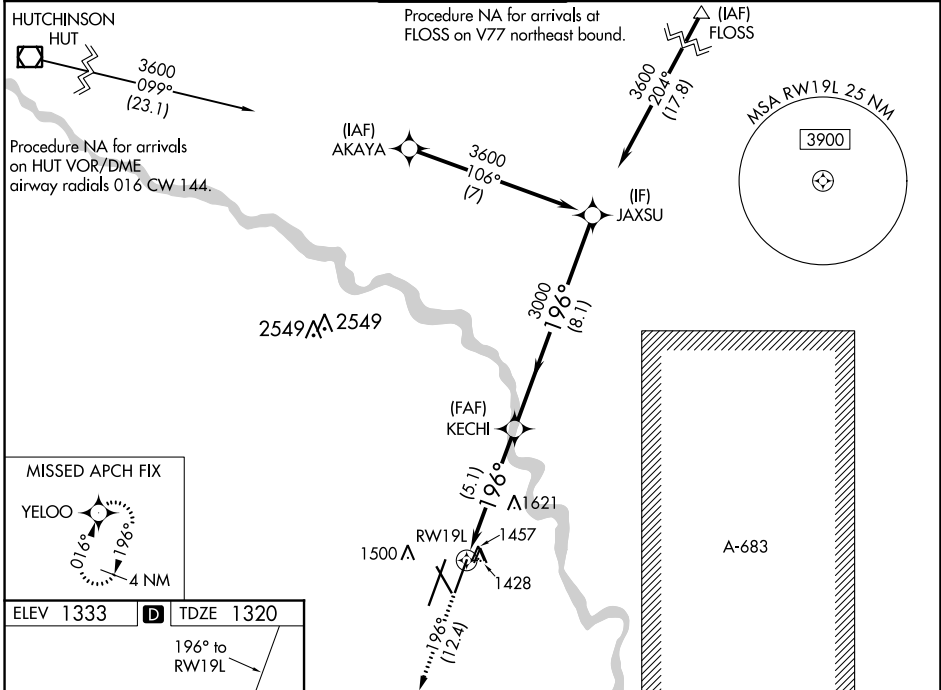
APP CRS	Rwy Idg	<b>7301</b>
<b>196°</b>	TDZE	<b>1320</b>
	Apt Elev	<b>1333</b>

# RNAV (RNP) Z RWY 19L

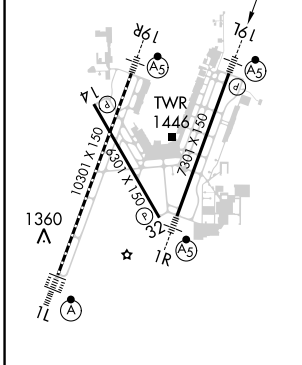
WICHITA DWIGHT D EISENHOWER NATIONAL (ICT)

RNP AR APCH.	MALSR	MISSED APPROACH: Climb to 3600 on track 196° to YELOO and hold.
▼ For uncompensated Baro-VNAV systems, procedure NA below -15°C (5°F) or above 54°C (130°F). For inoperative MALSR, increase RNP 0.11 all Cats visibility to ¾ mile and RNP 0.30 all Cats visibility to 1½ mile. GPS required. Simultaneous approach authorized with ILS or LOC RWY 19R. Use of FD or AP providing RNAV track guidance required during simultaneous operations.		

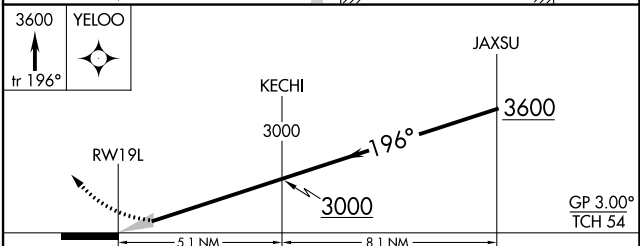
ATIS <b>125.15</b>	WICHITA APP CON <b>126.7 353.5</b>	WICHITA TOWER <b>118.2 257.8</b>	GND CON <b>121.9 348.6</b>	CLNC DEL <b>125.7</b>
-----------------------	---------------------------------------	-------------------------------------	-------------------------------	--------------------------



ELEV 1333	<b>D</b>	TDZE 1320
-----------	----------	-----------



HIRL all Rwys  
REIL Rwys 14 and 32  
TDZ/CL Rwy 1L



CATEGORY	A	B	C	D
RNP 0.11 DA		1570-½	250 (300-½)	
RNP 0.30 DA		1800-1⅛	480 (500-1⅛)	

**AUTHORIZATION REQUIRED**

NC-2, 25 FEB 2021 to 25 MAR 2021

NC-2, 25 FEB 2021 to 25 MAR 2021