


RNAV (RNP) Z RWY 21

IDAHO FALLS RGNL (IDA)

APP CRS	Rwy Idg	9002
206°	TDZE	4735
	Apt Elev	4744

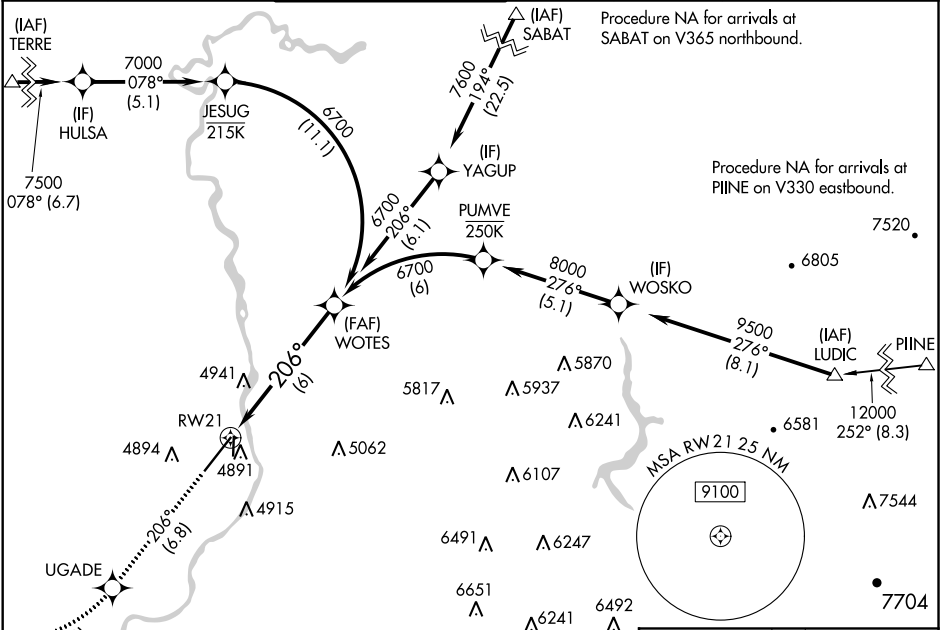
RNP AR APCH. RF required.

▼ For uncompensated Baro-VNAV systems, procedure NA below -27°C or above 49°C. For inop ALS increase RNP 0.11 visibility all Cats to RVR 4500, increase RNP 0.30 visibility all Cats to RVR 5000.

MALSR 

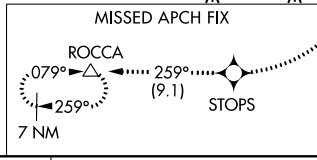
MISSED APPROACH: Climb to 7500 on track 206° to UGADE right turn to STOPS then on track 259° to ROCCA and hold.

ATIS	SALT LAKE CENTER	IDAHO FALLS TOWER *	GND CON	CLNC DEL	GCO	UNICOM
135.325	128.35 239.25	118.5 (CTAF) 0 257.8	121.7	121.7	121.725	122.95

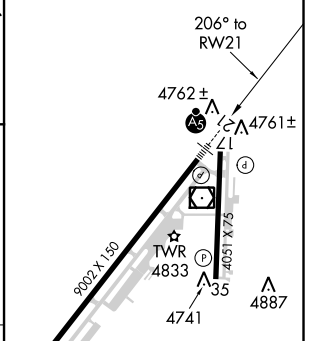
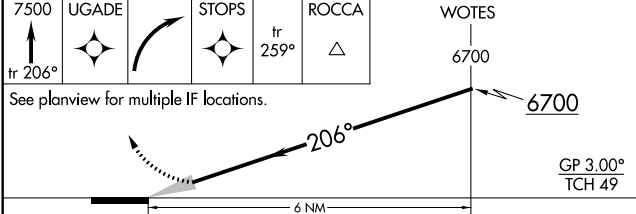


NW-1, 25 FEB 2021 to 25 MAR 2021

NW-1, 25 FEB 2021 to 25 MAR 2021



ELEV 4744	D TDZE 4735
-----------	--------------------



CATEGORY	A	B	C	D
RNP 0.11 DA		5011/24	276 (300-½)	
RNP 0.30 DA		5064/24	329 (400-½)	

AUTHORIZATION REQUIRED

REIL Rwy 3 **0**

HIRL Rwy 3-21 **0**

MIRL Rwy 17-35