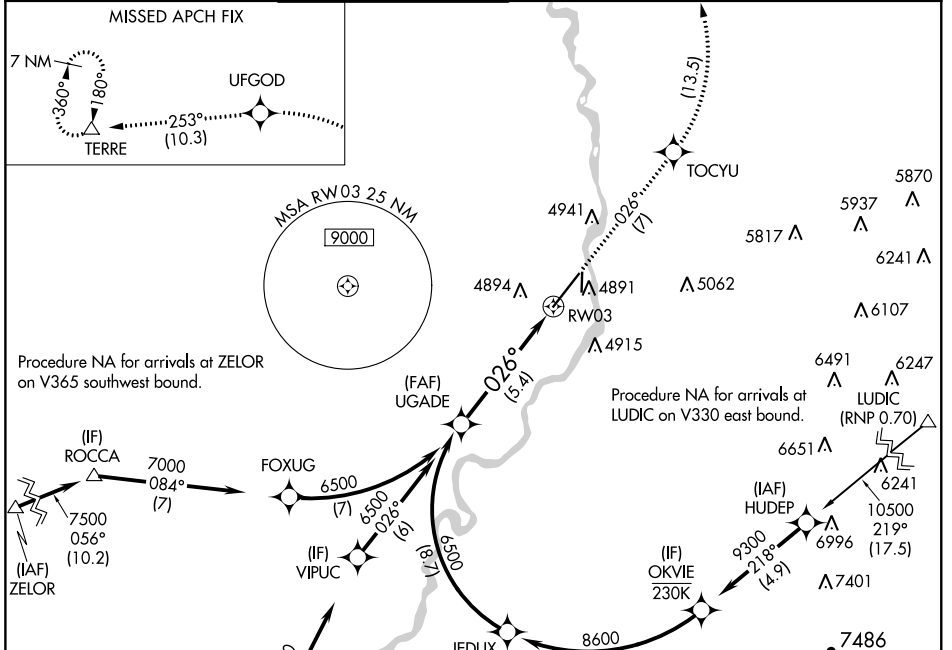


APP CRS	Rwy Idg	<b>9002</b>
<b>026°</b>	TDZE	<b>4744</b>
	Apt Elev	<b>4744</b>

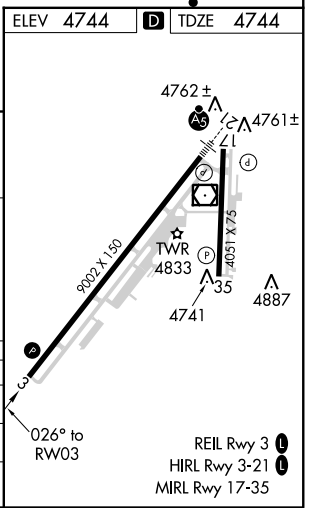
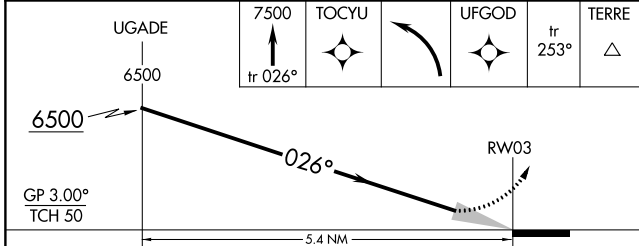
# RNAV (RNP) Z RWY 3

IDAHO FALLS RGNL (IDA)

RNP AR APCH. RF required.			MISSED APPROACH: Climb to 7500 on track 026° to TOCYU left turn to UFGOD, then track 253° to TERRE and hold.			
▼ For uncompensated Baro-VNAV systems, procedure NA below -27°C or above 49°C.			GND CON	CLNC DEL	GCO	UNICOM
ATIS	SALT LAKE CENTER	IDAHO FALLS TOWER*	<b>121.7</b>	<b>121.7</b>	<b>121.725</b>	<b>122.95</b>
<b>135.325</b>	<b>128.35 239.25</b>	<b>118.5 (CTAF) 0 257.8</b>				



ELEV 4744	TDZE 4744
-----------	-----------



CATEGORY	A	B	C	D
RNP 0.11 DA	5013-7/8 269 (300-7/8)			
RNP 0.30 DA	5071-1 327 (400-1)			

**AUTHORIZATION REQUIRED**

NW-1, 25 FEB 2021 to 25 MAR 2021

NW-1, 25 FEB 2021 to 25 MAR 2021