

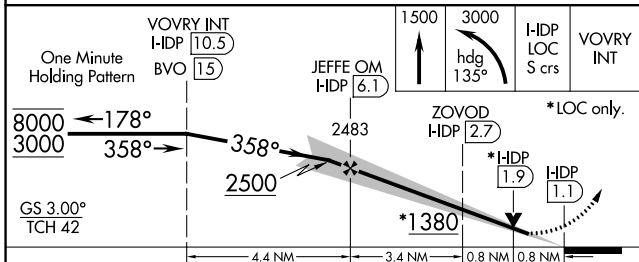
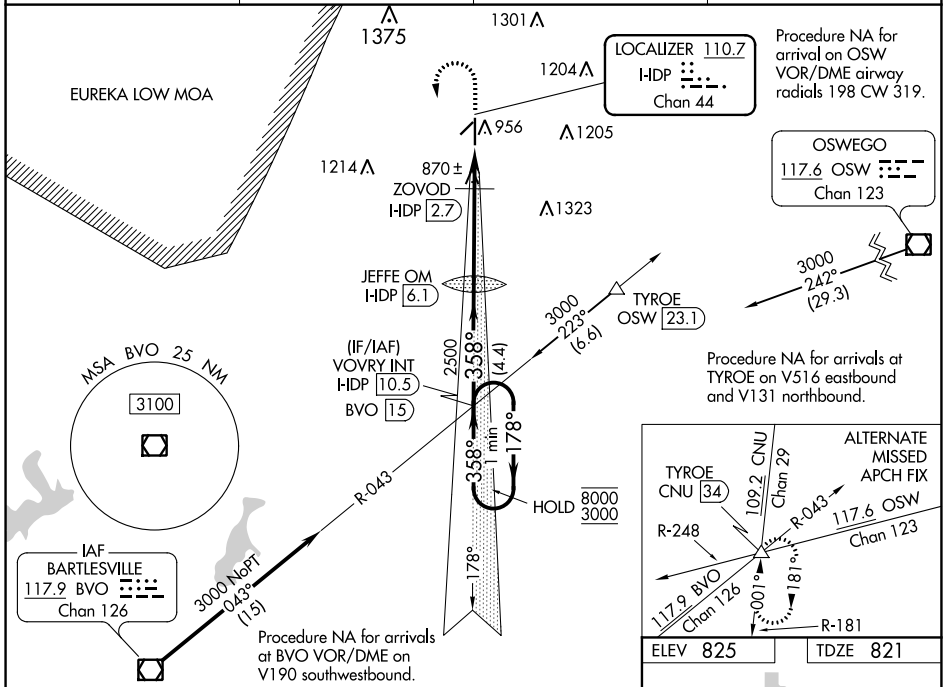
LOC/DME I-HDP <b>110.7</b> Chan <b>44</b>	APP CRS <b>358°</b>	Rwy Idg <b>5501</b> TDZE <b>821</b> Apt Elev <b>825</b>
---	------------------------	---

# ILS or LOC RWY 35

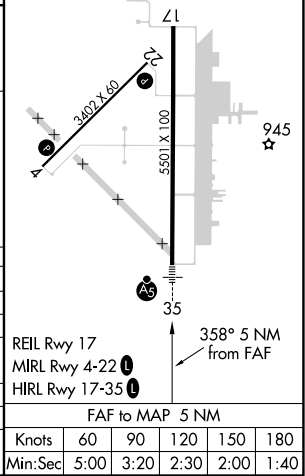
INDEPENDENCE MUNI (IDP)

<p><b>NA</b> Circling Rwy 4, 22 NA at night. For inop ALS, increase ZOVOD Fix Minimums Cats C and D visibility to 3/8 SM.</p>	<p><b>MALSR</b> AS</p>	<p><b>MISSED APPROACH:</b> Climb to 1500 then climbing left turn to 3000 on heading 135° to intercept I-HDP LOC S course to VOVRY INT and hold.</p>
---	----------------------------	---

AWOS-3 <b>118.525</b>	KANSAS CITY CENTER <b>132.9 279.5</b>	CLNC DEL <b>121.65</b>	UNICOM <b>123.05 (CTAF) 0</b>
--------------------------	--	---------------------------	----------------------------------



CATEGORY	A	B	C	D
S-ILS 35		1021-1/2	200 (200-1/2)	
S-LOC 35	1380-1/2	559 (600-1/2)	1380-1 1/8	559 (600-1 1/8)
<b>C</b> CIRCLING	1380-1	555 (600-1)	1380-1 5/8 555 (600-1 5/8)	1680-2 3/4 855 (900-2 3/4)
ZOVOD FIX MINIMUMS				
S-LOC 35		1120-1/2	299 (300-1/2)	
<b>C</b> CIRCLING	1280-1	455 (500-1)	1340-1 1/2 515 (600-1 1/2)	1680-2 3/4 855 (900-2 3/4)



NC-2, 25 FEB 2021 to 25 MAR 2021

NC-2, 25 FEB 2021 to 25 MAR 2021