

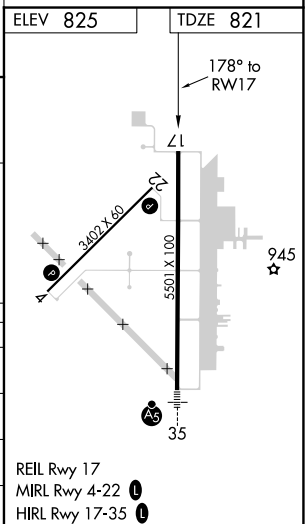
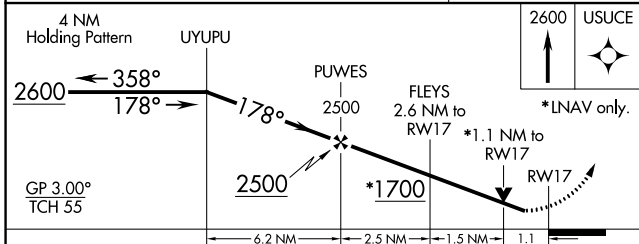
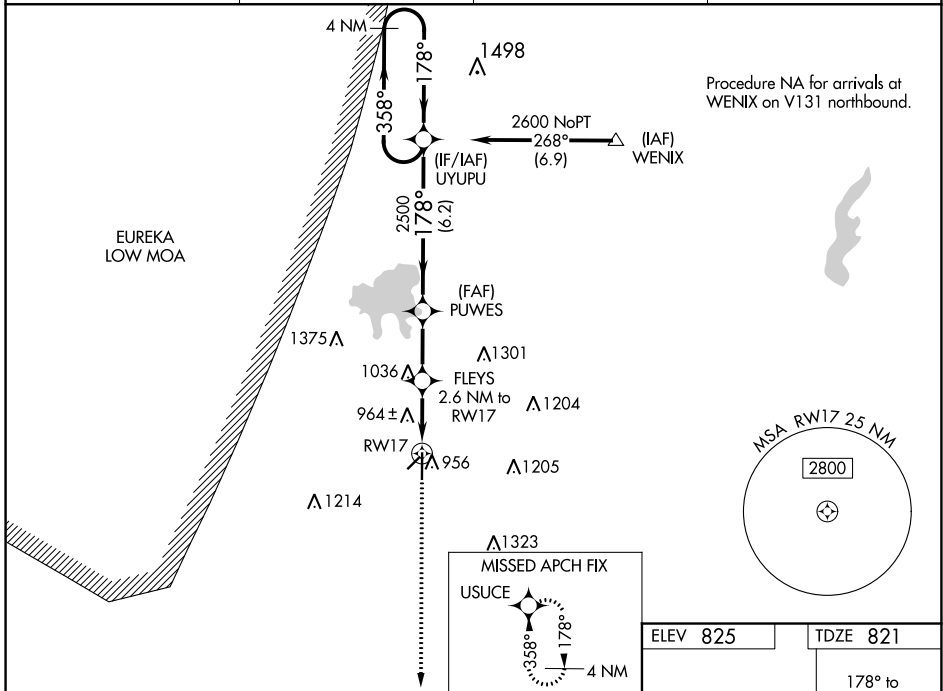
WAAS CH 50338 W17A	APP CRS 178°	Rwy Idg TDZE Apt Elev	5501 821 825
--	------------------------	-----------------------------	---

RNAV (GPS) RWY 17

INDEPENDENCE MUNI (IDP)

RNP APCH.	<p>▼ For uncompensated Baro-VNAV systems, LNAV/VNAV NA below -1.6°C (4°F) or above 54°C (130°F). Circling Rwy 4, 22 NA at night. Rwy 17 helicopter visibility reduction below 3/4 SM NA.</p> <p>▲ MISSED APPROACH: Climb to 2600 direct USUCE and hold.</p>
-----------	---

AWOS-3 118.525	KANSAS CITY CENTER 132.9 279.5	CLNC DEL 121.65	UNICOM 123.05 (CTAF) 0
--------------------------	--	---------------------------	----------------------------------



CATEGORY	A	B	C	D
LPV DA		1021-3/4	200 (200-3/4)	
LNAV/VNAV DA		1076-3/4	255 (300-3/4)	
LNAV MDA	1220-1	399 (400-1)	1220-1 1/8	399 (400-1 1/8)
C CIRCLING	1280-1	455 (500-1)	1340-1 1/2	1680-2 3/4
			515 (600-1 1/2)	855 (900-2 3/4)

NC-2, 25 FEB 2021 to 25 MAR 2021

NC-2, 25 FEB 2021 to 25 MAR 2021