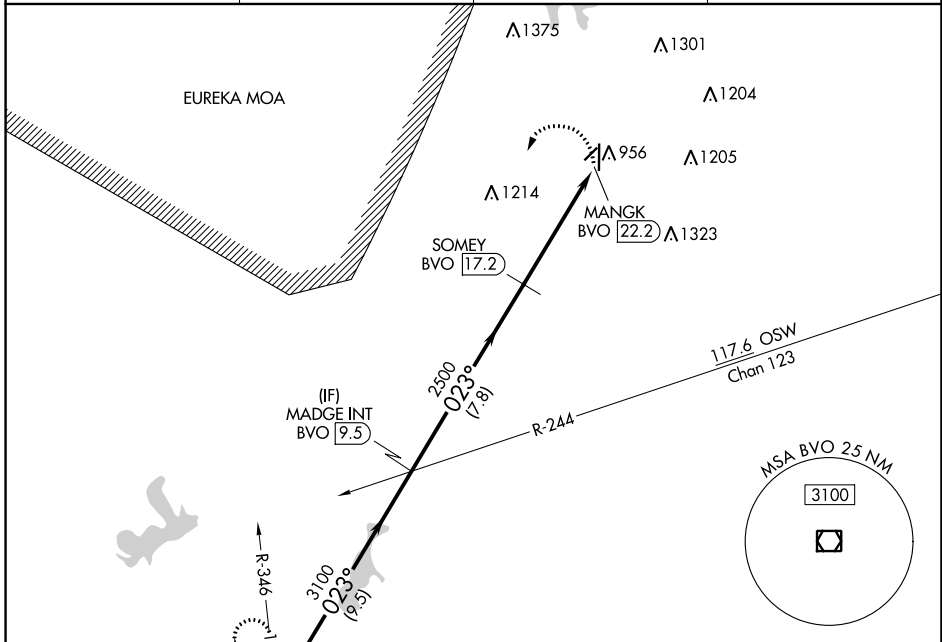


VOR/DME BVO <b>117.9</b> Chan <b>126</b>	APP CRS <b>023°</b>	Rwy Idg TDZE Apt Elev <b>N/A</b> <b>N/A</b> <b>825</b>
--	------------------------	---

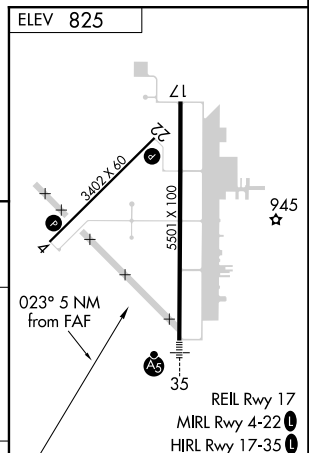
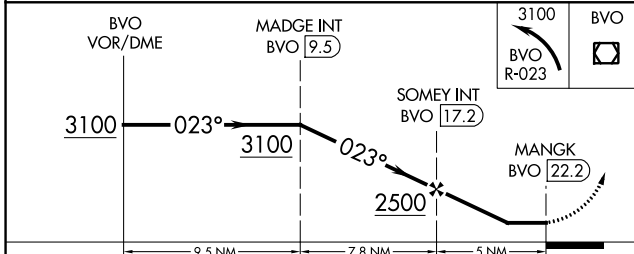
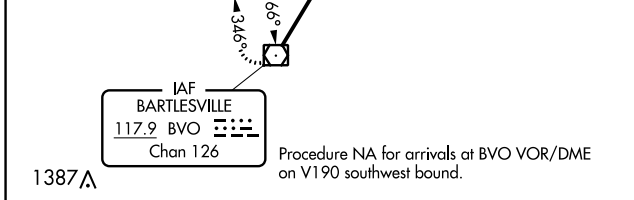
**VOR-A**  
INDEPENDENCE MUNI (IDP)

DME required. ▼ Circling Rwy 4, 22 NA at night.		MISSED APPROACH: Climbing left turn to 3100 on BVO VOR/DME R-023 to BVO VOR/DME and hold.	
AWOS-3 <b>118.525</b>	KANSAS CITY CENTER <b>132.9 279.5</b>	CLNC DEL <b>121.65</b>	UNICOM <b>123.05</b> (CTAF) <b>0</b>



NC-2, 25 FEB 2021 to 25 MAR 2021

NC-2, 25 FEB 2021 to 25 MAR 2021



CATEGORY	A	B	C	D	FAF to MAP 5 NM					
☑ CIRCLING	1420-1	595 (600-1)	1420-1½ 595 (600-1½)	1680-2¾ 855 (900-2¾)	Knots	60	90	120	150	180
					Min:Sec	5:00	3:20	2:30	2:00	1:40