

WAAS CH <b>86732</b> <b>W31A</b>	APP CRS <b>314°</b>	Rwy Idg TDZE Apt Elev	<b>4600</b> <b>1137</b> <b>1137</b>
--	------------------------	-----------------------------	---

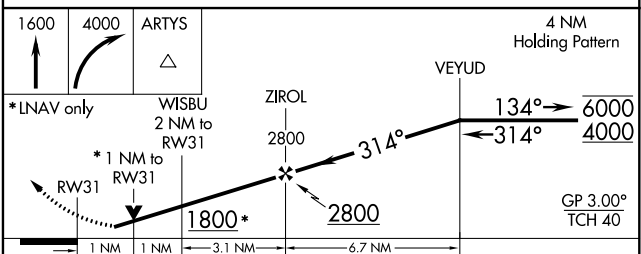
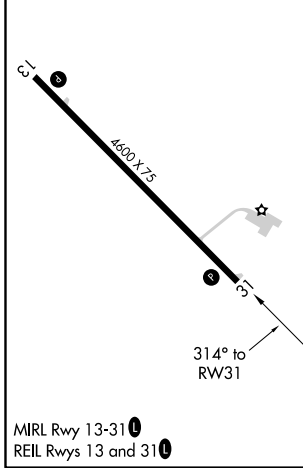
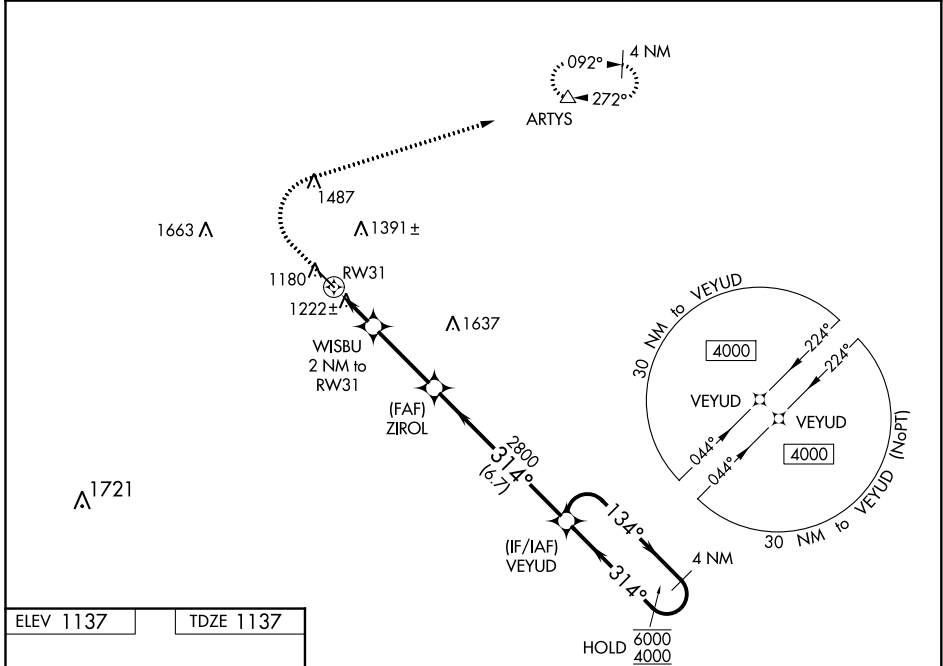
# RNAV (GPS) RWY 31

IOWA FALLS MUNI (IF'A)

RNP APCH.  
 Rwy 31 helicopter visibility reduction below 3/4 SM NA. For uncompensated Baro-VNAV systems, LNAV/VNAV NA below -17°C or above 54°C.

MISSED APPROACH: Climb to 1600 then climbing right turn to 4000 direct ARTYS and hold, continue climb-in-hold to 4000.

AWOS-3 <b>120.425</b>	WATERLOO APP CON ★ <b>118.9</b>	UNICOM <b>122.8 (CTAF) 0</b>
--------------------------	------------------------------------	---------------------------------



CATEGORY	A	B	C	D
LPV DA		1387-1	250 (300-1)	
LNAV/VNAV DA		1387-1	250 (300-1)	
LNAV MDA		1480-1	343 (400-1)	
CIRCLING	1540-1 403 (500-1)	1620-1 483 (500-1)	1760-1 3/4 623 (700-1 3/4)	1800-2 663 (700-2)

NC-3, 25 FEB 2021 to 25 MAR 2021

NC-3, 25 FEB 2021 to 25 MAR 2021