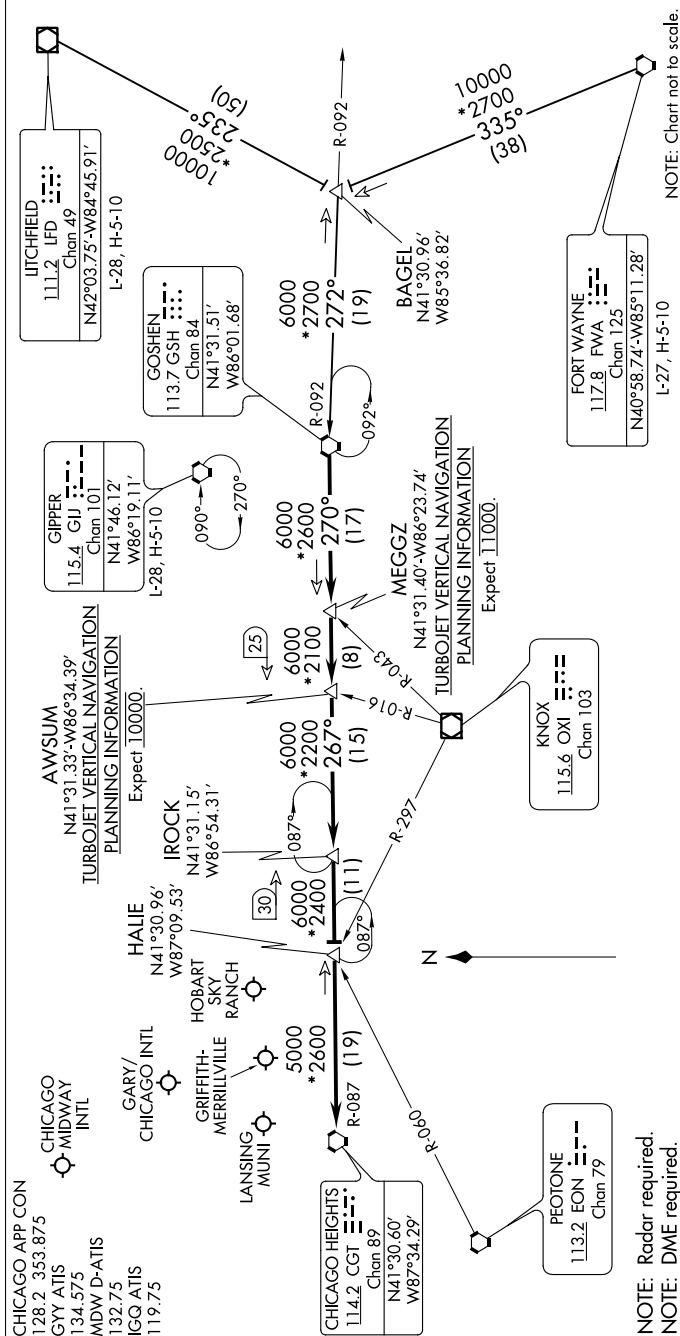


EC-3, 25 FEB 2021 to 25 MAR 2021



ARRIVAL ROUTE DESCRIPTION

FORT WAYNE TRANSITION (FWA.GSH7): From over FWA VORTAC on FWA R-335 to BAGEL then on GSH R-092 to GSH VORTAC. Thence....
IITCHFIELD TRANSITION (IFD.GSH7): From over IFD VOR/DME on IFD R-235 to BAGEL then on GSH R-092 to GSH VORTAC. Thence....

....From over GSH VORTAC on GSH R-270 to MEGGZ, then on GSH R-270 to AWSUM, then on GSH R-270 and CGT R-087 to IROCK, then on CGT R-087 to HALIE INT, then on CGT R-087 to CGT VORTAC.
 Expect radar vectors to final approach course.

NOTE: Chart not to scale.

EC-3, 25 FEB 2021 to 25 MAR 2021