

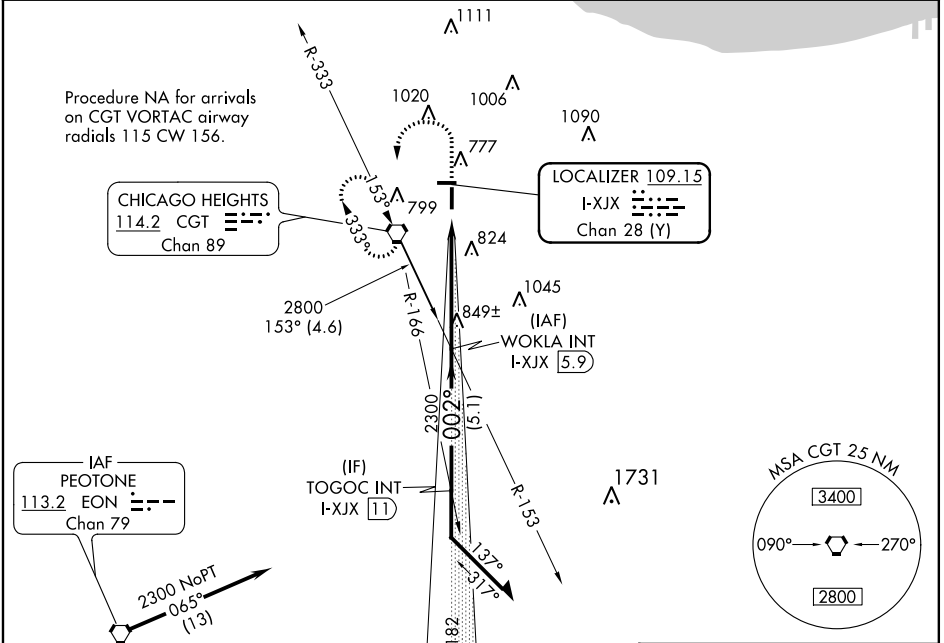
LOC/DME I-XJX <b>109.15</b> Chan <b>28</b> (Y)	APP CRS <b>002°</b>	Rwy Idg TDZE Apt Elev	<b>4002</b> <b>620</b> <b>620</b>
--	------------------------	-----------------------------	---

**LOC RWY 36**  
LANSING MUNI (IGQ)

**V** VDP NA when using Chicago Midway Intl altimeter setting.  
When local altimeter setting not received, use Chicago Midway Intl altimeter setting and increase all MDAs 60 feet.  
**NA** Circling Rwy 9 NA at night.

**MISSED APPROACH:** Climb to 1300 then climbing left turn to 2800 direct CGT VORTAC and hold, continue climb-in-hold to 2800.

AWOS-3 <b>119.275</b>	CHICAGO APP CON <b>128.2 285.6</b>	UNICOM <b>122.7</b> (CTAF) <b>0</b>
--------------------------	---------------------------------------	--



Procedure NA for arrivals on CGT VORTAC airway radials 115 CW 156.

**CHICAGO HEIGHTS**  
114.2 CGT  
Chan 89

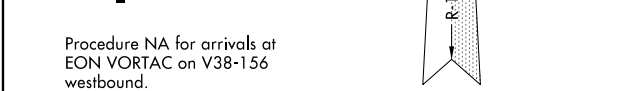
**LOCALIZER 109.15**  
I-XJX  
Chan 28 (Y)

**IAF PEOTONE**  
113.2 EON  
Chan 79

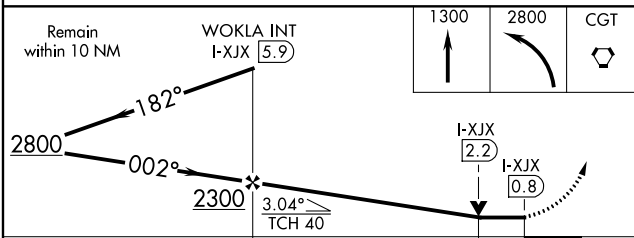
Procedure NA for arrivals at EON VORTAC on V38-156 westbound.

EC-3, 25 FEB 2021 to 25 MAR 2021

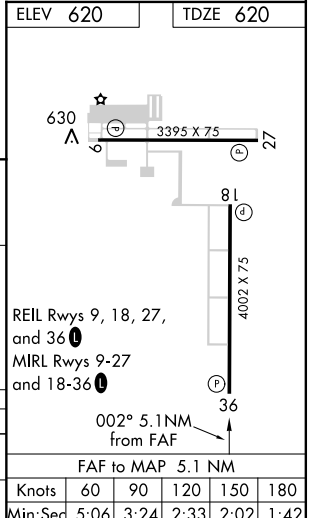
EC-3, 25 FEB 2021 to 25 MAR 2021



ELEV 620	TDZE 620
----------	----------



CATEGORY	A	B	C	D
S-36	1100-1 480 (500-1)		NA	
CIRCLING	1140-1 520 (600-1)		NA	



Knots	60	90	120	150	180
Min:Sec	5:06	3:24	2:33	2:02	1:42