

WAAS CH 45609 W31A	APP CRS 309°	Rwy Idg 4020 TDZE 640 Apt Elev 646
--	------------------------	---

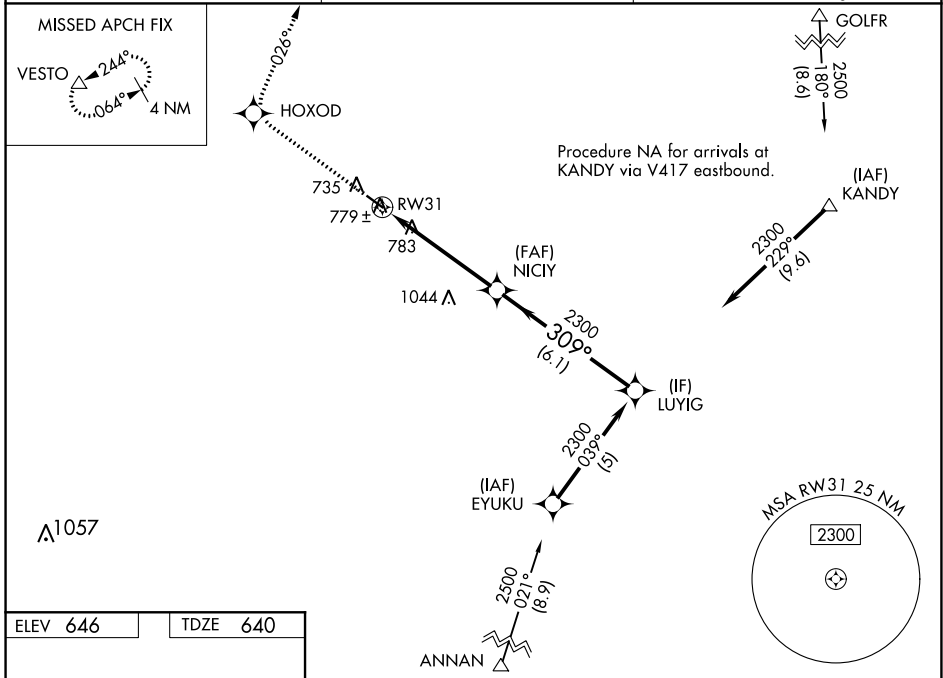
RNAV (GPS) RWY 31

WASHINGTON-WILKES COUNTY (I1Y)

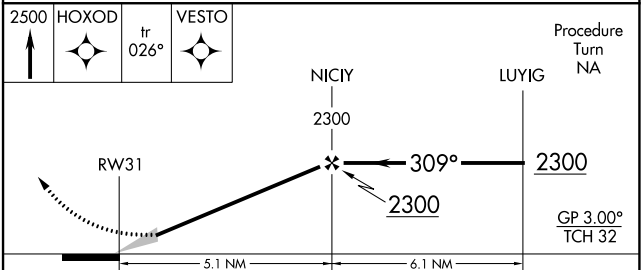
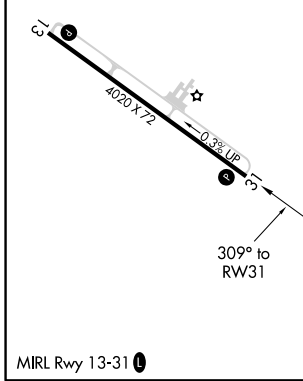
V Baro-VNAV NA when using Athens altimeter setting. For uncompensated Baro-VNAV systems, LNAV/VNAV NA below -16°C (4°F) or above 54°C (130°F). DME/DME RNP-0.3 NA.
NA When local altimeter setting not received, use Athens altimeter setting: increase LPV DA to 1078 feet, LNAV/VNAV DA to 1135 feet, and all visibilities ¼ SM; increase all MDAs 100 feet and visibility Cat C ¼ SM.

MISSED APPROACH: Climb to 2500 direct HOXOD and on 026° track to VESTO and hold.

AWOS-3 118.375	AUGUSTA APP CON* 126.8 270.3	UNICOM 122.7 (CTAF)
--------------------------	--	-------------------------------



ELEV 646	TDZE 640
-----------------	-----------------



CATEGORY	A	B	C	D
LPV DA	992-1¼ 352 (400-1¼)			NA
LNAV/VNAV DA	1049-1½ 409 (500-1½)			NA
LNAV MDA	1200-1 560 (600-1)	1200-1½ 560 (600-1½)		NA
CIRCLING	1200-1 554 (600-1)	1200-1½ 554 (600-1½)		NA

SE-4, 25 FEB 2021 to 25 MAR 2021

SE-4, 25 FEB 2021 to 25 MAR 2021