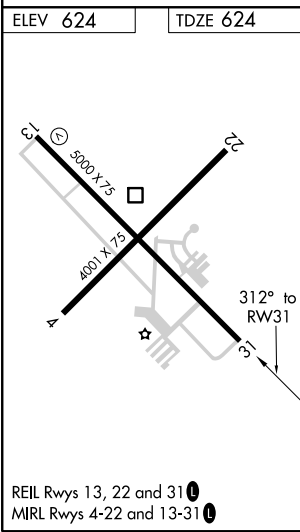
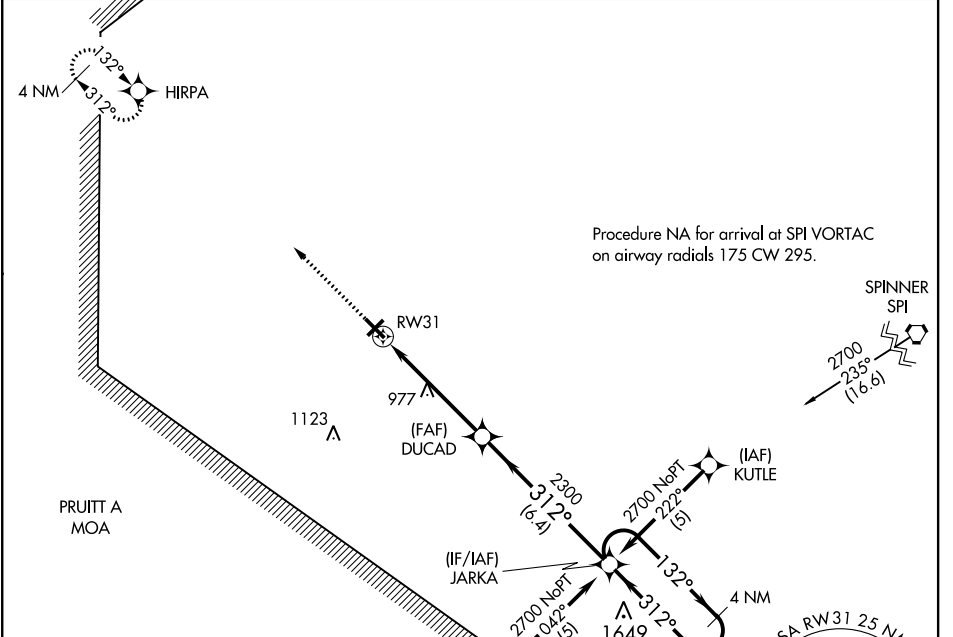


APP CRS 312°	Rwy Idg TDZE Apt Elev	5000 624 624
------------------------	-----------------------------	---

RNAV (GPS) RWY 31

JACKSONVILLE MUNI (IJX)

RNP APCH.		MISSED APPROACH: Climb to 2700 direct HIRPA and hold.	
Rwy 31 helicopter visibility reduction below 3/4 SM NA.		AWOS-3 120.525	SPRINGFIELD APP CON ★ 118.45 126.15 323.0
		CLNC DEL 118.45	UNICOM 122.8 (CTAF)



ELEV 624	TDZE 624	2700 HIRPA 4 NM Holding Pattern DUCAD JARKA 1.9 NM to RWY31 312° 132° 2700 312° ← 312° → 3.05° TCH 40 1.9 NM 3.2 NM 6.4 NM				
REIL Rws 13, 22 and 31	MIRL Rws 4-22 and 13-31	CATEGORY	A	B	C	D
		LNAV MDA	1280-1	656 (700-1)	1280-1 7/8 656 (700-1 7/8)	1280-2 656 (700-2)
		CIRCLING	1280-1	656 (700-1)	1280-1 7/8 656 (700-1 7/8)	1280-2 656 (700-2)

EC-3, 25 FEB 2021 to 25 MAR 2021

EC-3, 25 FEB 2021 to 25 MAR 2021