

LOC I-GMX <b>111.55</b>	APP CRS <b>238°</b>	Rwy Idg <b>8016</b> TDZE <b>26</b> Apt Elev <b>32</b>
----------------------------	------------------------	---

# ILS Y or LOC RWY 24

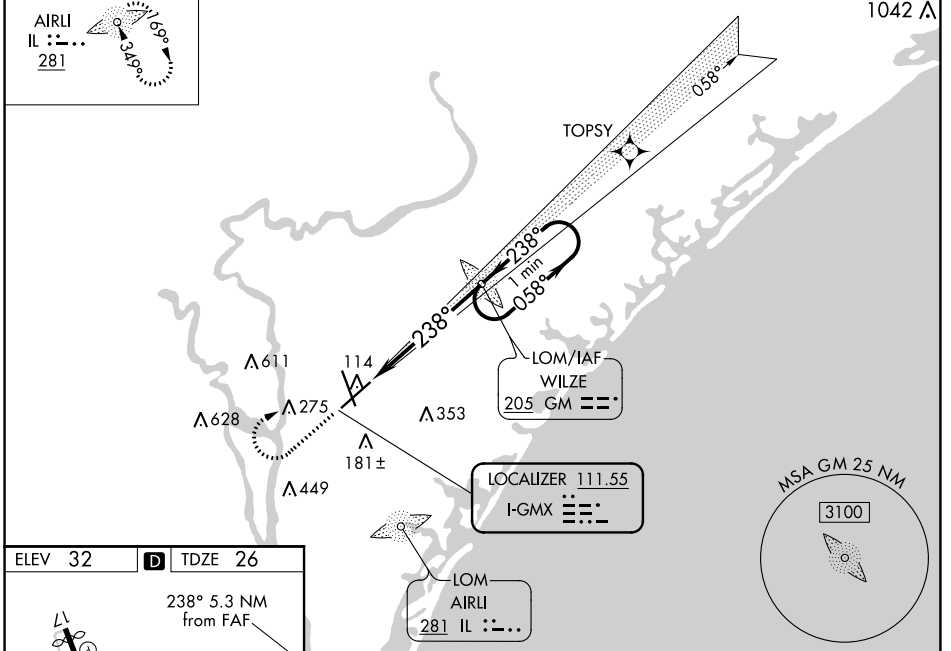
WILMINGTON INTL (ILM)

<b>ASR</b> **RVR 1800 authorized with use of FD or AP or HUD to DA. ADF required.	<b>MALS R</b>	MISSED APPROACH: Climb to 500 then climbing right turn to 1800 direct WILZE LOM and hold.		
ATIS <b>124.975</b>	WILMINGTON APP CON * <b>118.25 284.65</b> (164°-343°) <b>135.75 317.425</b> (344°-163°)	WILMINGTON TOWER * <b>119.9</b> (CTAF) <b>0 239.3</b>	GND CON <b>121.9 348.6</b>	UNICOM <b>122.95</b>

ALTERNATE MISSED APCH FIX

AIRLI  
IL : - . .  
281

## RNAV 1-GPS or RADAR REQUIRED



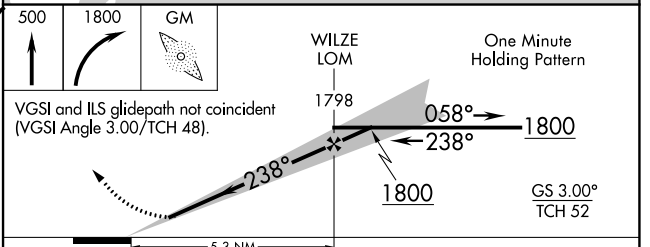
ELEV 32	<b>D</b>	TDZE 26
---------	----------	---------

238° 5.3 NM from FAF

HIRL Rwy 17-35  
HIRL Rwy 6-24 **1**  
REIL Rwy 17  
REIL Rwy 6 **1**

FAF to MAP 5.3 NM

Knots	60	90	120	150	180
Min:Sec	5:18	3:32	2:39	2:07	1:46



CATEGORY	A	B	C	D
S-ILS 24**	226/24		200 (200-½)	
S-LOC 24	500/24	474 (500-½)	500/50	474 (500-1)
<b>C</b> CIRCLING	560-1	528 (600-1)	720-2 688 (700-2)	920-3 888 (900-3)

SE-2, 25 FEB 2021 to 25 MAR 2021

SE-2, 25 FEB 2021 to 25 MAR 2021