

LOC I-GMX 111.55	APP CRS 238°	Rwy Idg 8016 TDZE 26 Apt Elev 32
----------------------------	------------------------	---

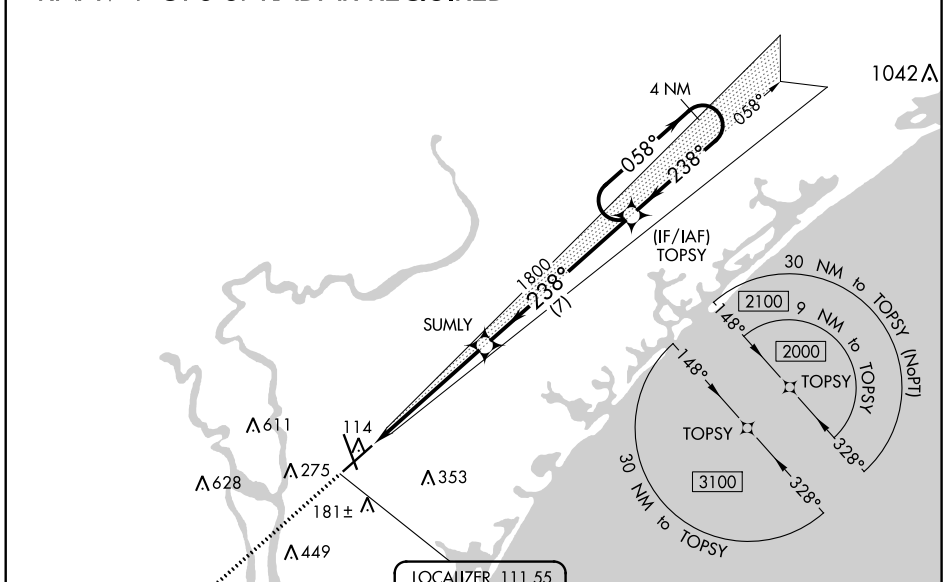
ILS Z RWY 24

WILMINGTON INTL (ILM)

ASR	RNAV 1-GPS required. **RVR 1800 authorized with use of FD or AP or HUD to DA.	MALSRR 	MISSED APPROACH: Climb to 3100 direct LURKY and hold.
-----	--	------------	---

ATIS 124.975	WILMINGTON APP CON * 118.25 284.65 (164°-343°) 135.75 317.425 (344°-163°)	WILMINGTON TOWER * 119.9 (CTAF) 239.3	GND CON 121.9 348.6	UNICOM 122.95
------------------------	---	--	-------------------------------	-------------------------

RNAV 1-GPS or RADAR REQUIRED

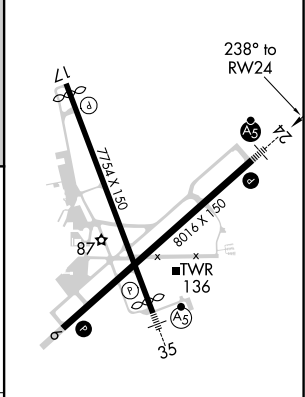
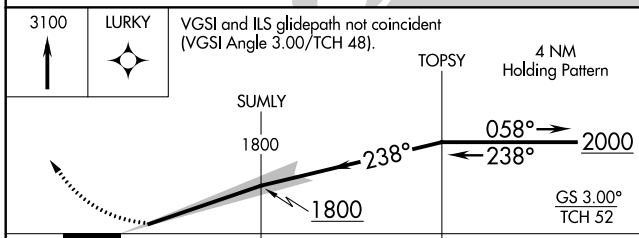


SE-2, 25 FEB 2021 to 25 MAR 2021

SE-2, 25 FEB 2021 to 25 MAR 2021



ELEV 32	D	ELEV 26
---------	----------	---------



CATEGORY	A	B	C	D
S-ILS 24**	226/24 200 (200-1/2)			

REIL Rwy 6 **1**
REIL Rwy 17
HIRL Rwy 6-24 **1**
HIRL Rwy 17-35