

WILMINGTON, NORTH CAROLINA

AL-459 (FAA)

19115

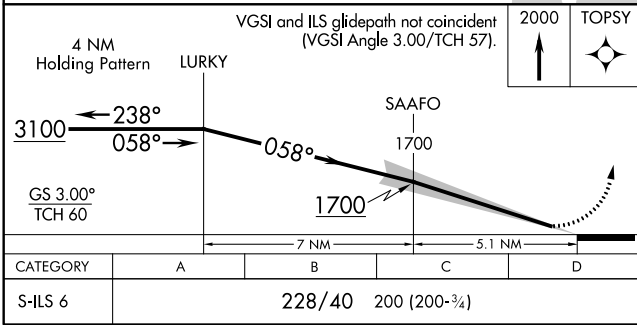
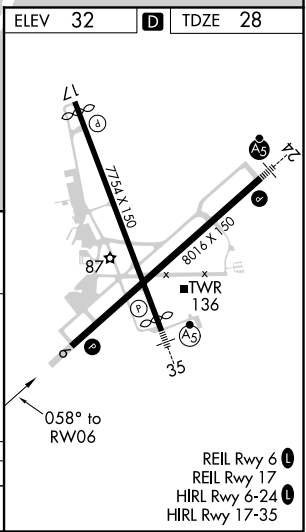
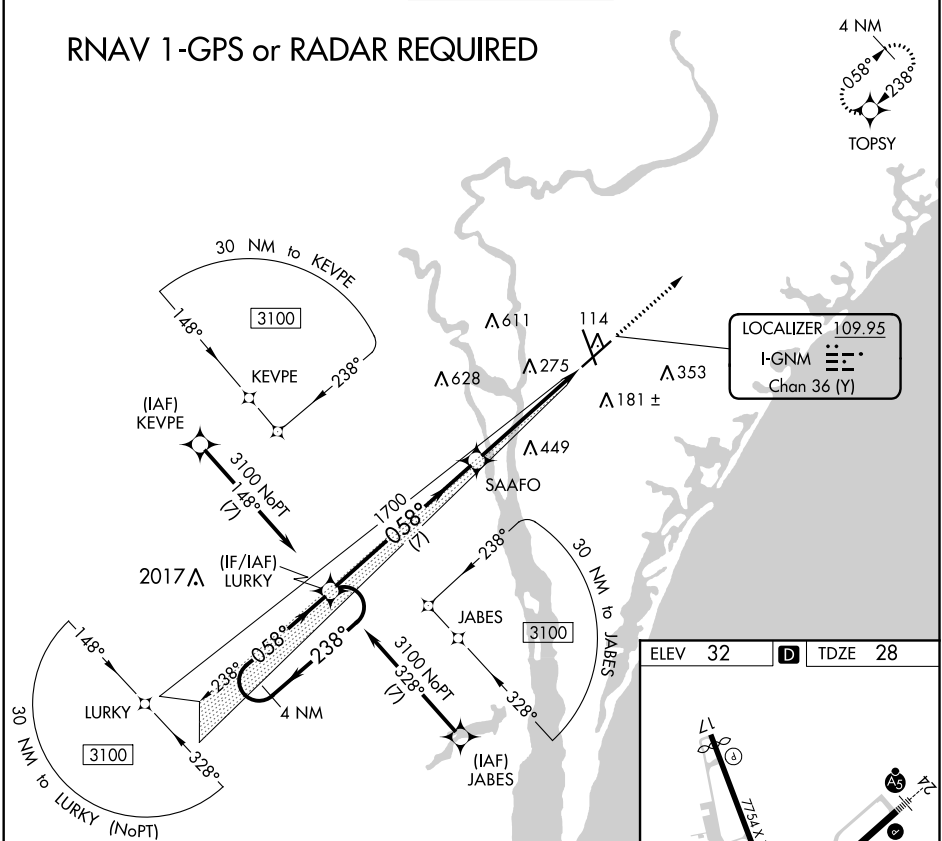
LOC/DME I-GNM <b>109.95</b> Chan 36 (Y)	APP CRS <b>058°</b>	Rwy Idg TDZE Apt Elev	<b>8016</b> <b>28</b> <b>32</b>
---	------------------------	-----------------------------	---------------------------------------

**ILS Z RWY 6**  
WILMINGTON INTL (ILM)

ASR	RNAV 1-GPS required.	MISSED APPROACH: Climb to 2000 direct TOPSY and hold.
-----	----------------------	---

ATIS <b>124.975</b>	WILMINGTON APP CON * <b>118.25 284.65</b> (164°-343°) <b>135.75 317.425</b> (344°-163°)	WILMINGTON TOWER * <b>119.9</b> (CTAF) <b>239.3</b>	GND CON <b>121.9 348.6</b>	UNICOM <b>122.95</b>
------------------------	---	--	-------------------------------	-------------------------

### RNAV 1-GPS or RADAR REQUIRED



SE-2, 25 FEB 2021 to 25 MAR 2021

SE-2, 25 FEB 2021 to 25 MAR 2021

WILMINGTON, NORTH CAROLINA  
Orig-B 17AUG17

34°16'N-77°54'W

WILMINGTON INTL (ILM)  
**ILS Z RWY 6**