



LOC I-IMT 111.5	APP CRS 010°	Rwy Idg 6501
		TDZE 1133
		Apt Elev 1182

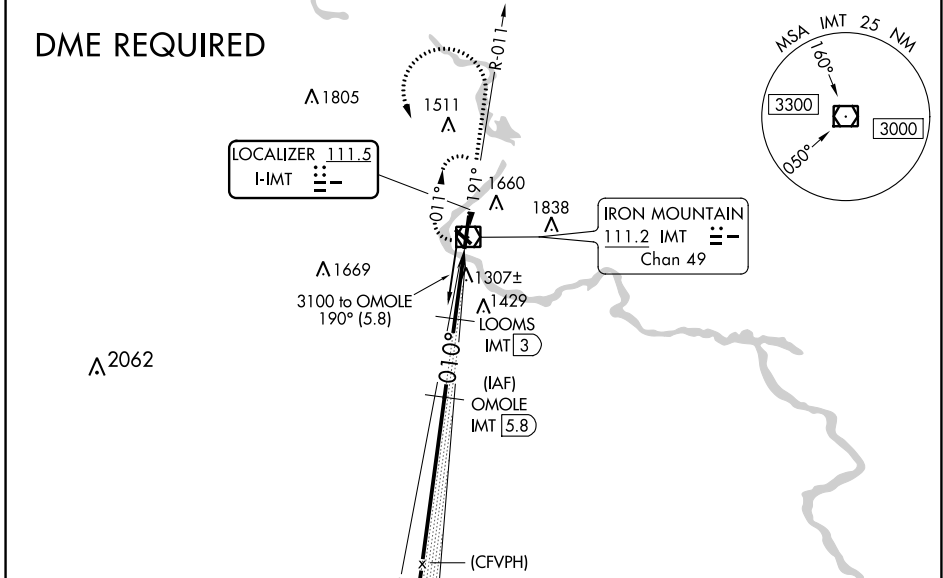
ILS or LOC RWY 1





FORD (IMT)

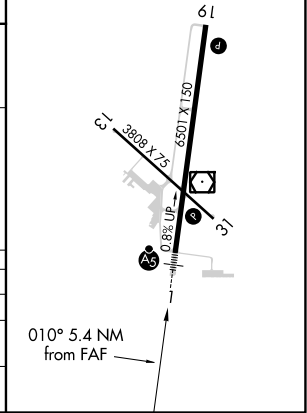
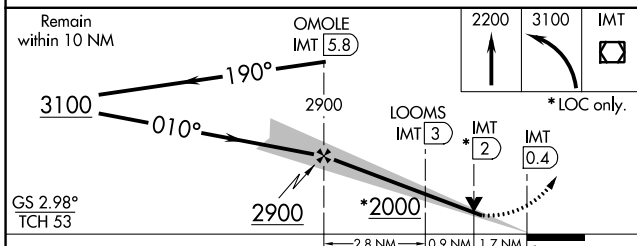
NA Night Landing: Rwy 13, 31 NA. When local altimeter setting not received, use Escanaba altimeter setting and increase all DA/MDA 180 feet, increase S-ILS 1 visibility all Cats ¼ mile, increase S-LOC 1 Cat B visibility ¼ mile, Cat C and D visibility ½ mile, increase Circling Cat B visibility ¼ mile, Cat C visibility ¾ mile, Cat D visibility ½ mile. For inoperative MALSR when using Escanaba altimeter setting, increase S-LOC 1 visibility Cat C/D to 2½ mile. DME from IMT VOR/DME. Simultaneous reception of I-IMT and IMT DME required.


MALSR

MISSED APPROACH:
 Climb to 2200 then climbing left turn to 3100 direct IMT VOR/DME and hold.

ASOS 119.025	MINNEAPOLIS CENTER 121.25 322.5	UNICOM 122.8 (CTAF) 
------------------------	---	---



ELEV 1182		TDZE 1133
MIRL Rwy 13-31		
HIRL Rwy 1-19		
REL Rwys 19 and 31		



CATEGORY	A	B	C	D
S-ILS 1	1333-½		200 (200-½)	
S-LOC 1	1720-½	587 (600-½)	1720-1¼	587 (600-1¼)
 CIRCLING	1720-1 538 (600-1)	1780-1 598 (600-1)	1780-1¾ 598 (600-1¾)	1840-2 658 (700-2)

EC-1, 25 FEB 2021 to 25 MAR 2021

EC-1, 25 FEB 2021 to 25 MAR 2021