

LOC I-IMT <b>111.5</b>	APP CRS <b>190°</b>	Rwy Idg <b>6376</b>
		TDZE <b>1182</b>
		Apt Elev <b>1182</b>

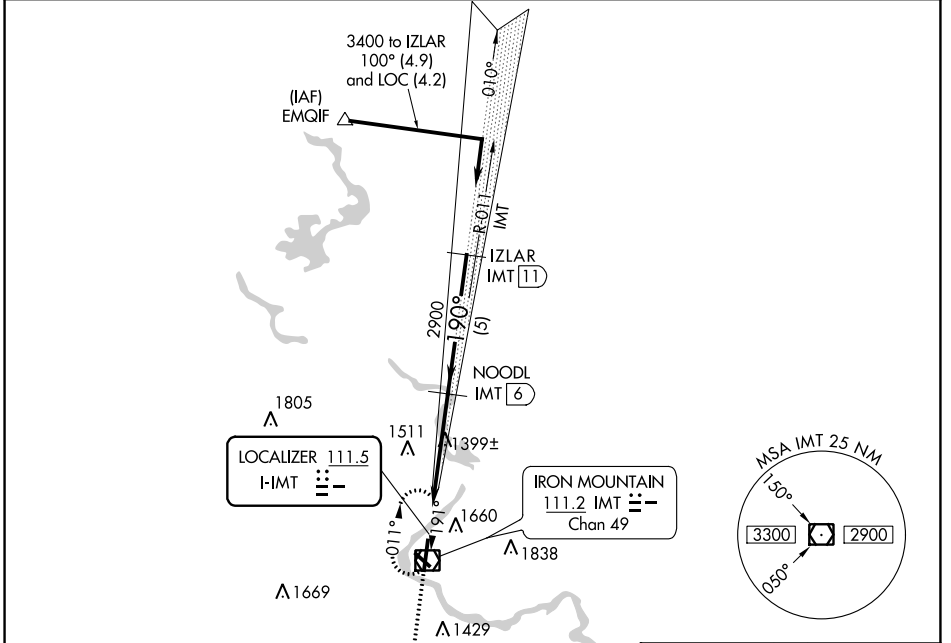
# LOC/DME BC RWY 19

FORD (IMT)

**⚠** Circling NA northeast of Rwsy 19 and 31. DME from IMT VOR/DME. Simultaneous reception of I-IMT and IMT DME required. Helicopter visibility reduction below 1 SM NA. Rwy 19 Straight-in and Circling and Circling to Rwy 31 NA at night.

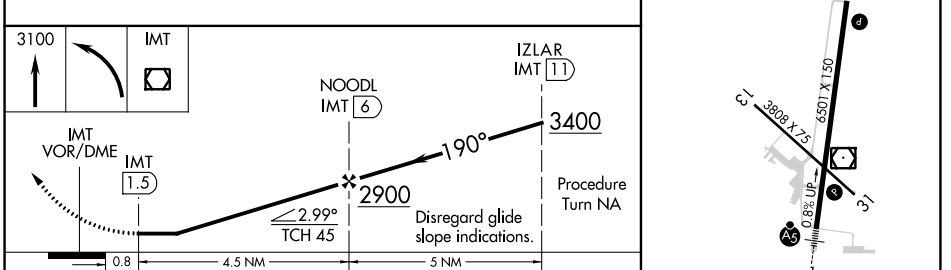
**MISSED APPROACH:** Climb to 3100 then left turn direct IMT VOR/DME and hold.

ASOS <b>119.025</b>	MINNEAPOLIS CENTER <b>121.25 322.5</b>	UNICOM <b>122.8 (CTAF) 0</b>
------------------------	---	---------------------------------



ELEV 1182	<b>D</b> TDZE 1182
-----------	--------------------

## BACK COURSE



CATEGORY	A	B	C	D
S-19	1660-1	478 (500-1)	1660-1¼ 478 (500-1¼)	1660-1½ 478 (500-1½)
<b>C</b> CIRCLING	1660-1 478 (500-1)	1780-1 598 (600-1)	1780-1½ 598 (600-1½)	1840-2 658 (700-2)

MIRL Rwy 13-31 **0**  
 HIRL Rwy 1-19 **0**  
 REIL Rwsy 19 and 31 **0**

EC-1, 25 FEB 2021 to 25 MAR 2021

EC-1, 25 FEB 2021 to 25 MAR 2021