

WAAS CH <b>77811</b> <b>W01A</b>	APP CRS <b>010°</b>	Rwy Idg <b>6501</b> TDZE <b>1133</b> Apt Elev <b>1182</b>
--	------------------------	---

# RNAV (GPS) RWY 1

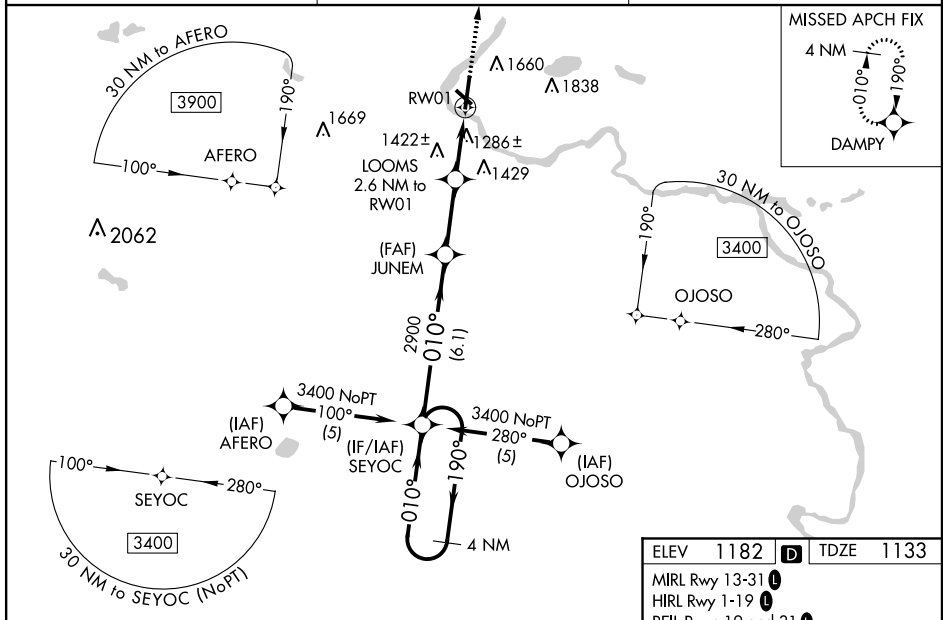
FORD (IMT)

**⚠** Inoperative table does not apply to LPV. For uncompensated Baro-VNAV systems, LNAV/VNAV NA below -17°C (2°F) or above 54°C (130°F). Circling NA NE of Rwy 19 and 31. DME/DME RNP-0.3 NA. When local altimeter setting not received, use Escanaba altimeter setting and increase all DA/MDA 180 feet, increase LPV all Cats visibility 1/4 SM, LNAV/VNAV all Cats visibility 3/4 SM, LNAV Cat C/D visibility 1/2 SM, and Circling Cat B visibility 1/4 SM, Cat C/D visibility 3/4 SM. For inoperative MALSR increase visibility LNAV Cat A and B 1/4 mile. For Inoperative MALSR when using Escanaba altimeter setting, increase LPV all Cats visibility to 1 1/2 mile, LNAV Cat A visibility to 1 mile. Baro-VNAV and VDP NA when using Escanaba altimeter setting. Circling to Rwy 31 NA at night. Helicopter visibility reduction below 3/4 SM NA.

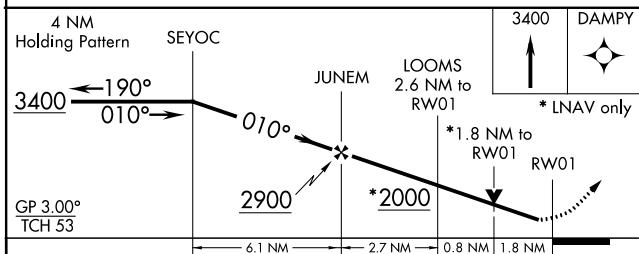


**MISSED APPROACH:**  
Climb to 3400 direct DAMPY and hold.

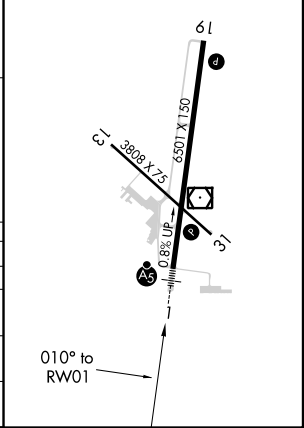
ASOS <b>119,025</b>	MINNEAPOLIS CENTER <b>121.25 322.5</b>	UNICOM <b>122.8 (CTAF)</b>
------------------------	---	-------------------------------



ELEV <b>1182</b>	TDZE <b>1133</b>
MIRL Rwy 13-31	HIRL Rwy 1-19
REIL Rwy 19 and 31	



CATEGORY	A	B	C	D
LPV DA	1383-3/4 250 (300-3/4)			
LNAV/VNAV DA	1806-2 673 (700-2)			
LNAV MDA	1760-3/4 627 (600-3/4)	1760-1/4 627 (600-1/4)	1760-1/4 627 (600-1/2)	1760-1/2 627 (600-1/2)
<b>C</b> CIRCLING	1760-1 578 (600-1)	1780-1 598 (600-1)	1780-1 598 (600-1 3/4)	1840-2 658 (700-2)



EC-1, 25 FEB 2021 to 25 MAR 2021

EC-1, 25 FEB 2021 to 25 MAR 2021