

|  |                        |   |             |
|--|------------------------|---|-------------|
| WAAS<br>CH <b>40308</b><br><b>W16A</b> | APP CRS<br><b>156°</b> | Rwy Idg<br>TDZE <b>686</b><br>Apt Elev <b>686</b> | <b>3998</b> |
|--|------------------------|---|-------------|

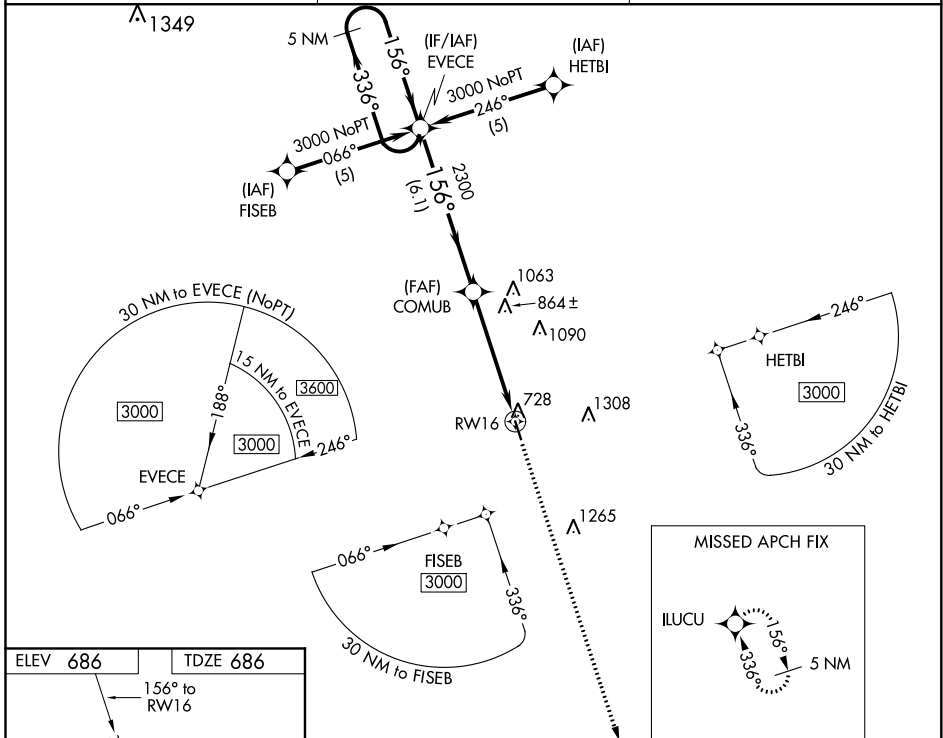
# RNAV (GPS) RWY 16

HILLSBORO MUNI (INJ)

**⚠** Baro-VNAV NA when using Cleburne Rgnl altimeter setting. DME/DME RNP-0.3 NA. For uncompensated Baro-VNAV systems, LNAV/VNAV NA below -16°C (4°F) or above 54°C (130°F). Visibility reduction by helicopters NA. When local altimeter setting not received use Cleburne Rgnl altimeter setting and increase all DA/MDA 80 feet, increase LPV and LNAV/VNAV visibility 1/4 mile all Cats.

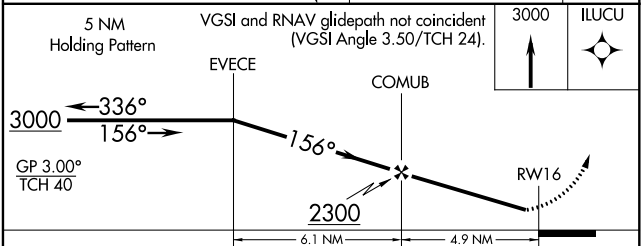
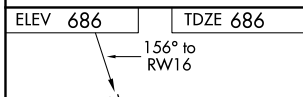
**MISSED APPROACH:** Climb to 3000 direct ILUCU and hold.

|                          |  |                      |
|--------------------------|--|----------------------|
| AWOS-3<br><b>118.725</b> | FORT WORTH CENTER*<br><b>133.3 269.5</b> | CTAF<br><b>122.9</b> |
|--------------------------|--|----------------------|



SC-2, 25 FEB 2021 to 25 MAR 2021

SC-2, 25 FEB 2021 to 25 MAR 2021



| CATEGORY     | A                     | B                     | C | D  |
|--------------|-----------------------|-----------------------|---|----|
| LPV DA       | 936-1                 | 250 (300-1)           |   | NA |
| LNAV/VNAV DA | 1128-1½               | 442 (500-1½)          |   | NA |
| LNAV MDA     | 1120-1                | 434 (500-1)           |   | NA |
| CIRCLING     | 1180-1<br>494 (500-1) | 1200-1<br>514 (600-1) |   | NA |