

WAAS CH 65908 W34A	APP CRS 336°	Rwy Idg 3998 TDZE 684 Apt Elev 686
--	------------------------	---

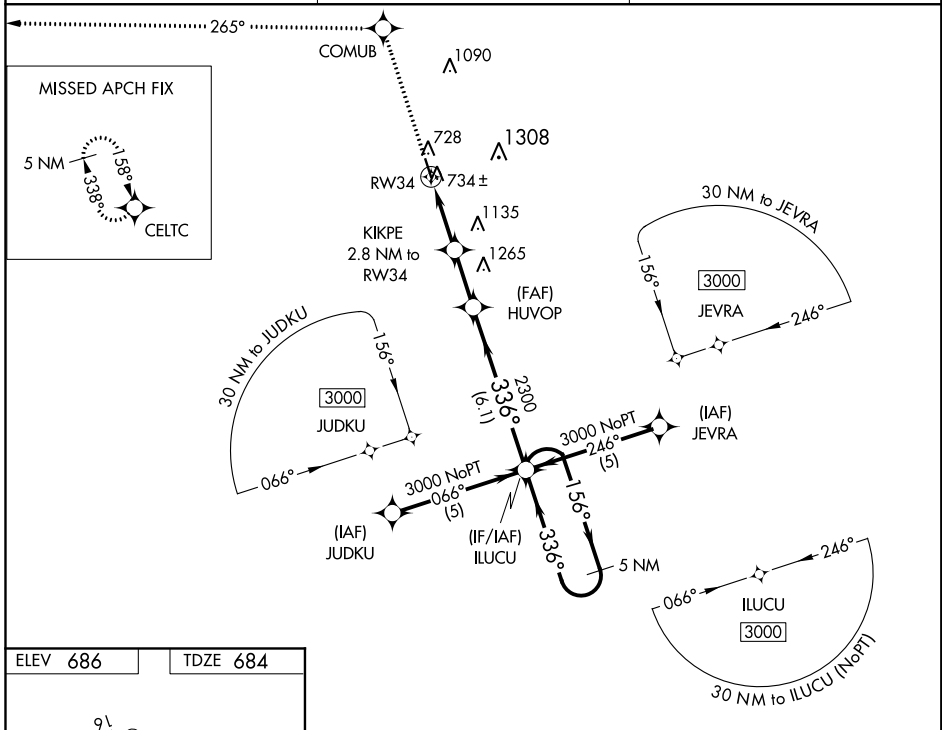
RNAV (GPS) RWY 34

HILLSBORO MUNI (INJ)

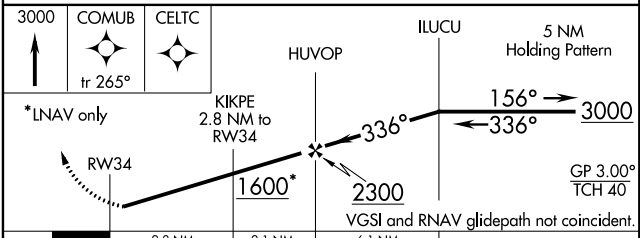
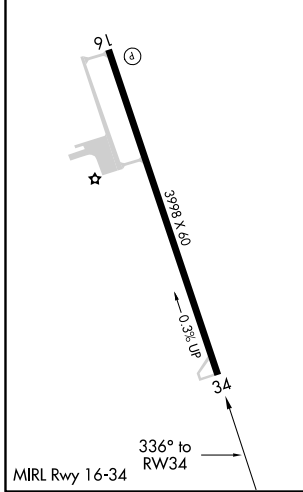
▼ Baro-VNAV NA when using Cleburne Rgnl altimeter setting. DME/DME RNP-0.3 NA. For uncompensated Baro-VNAV systems, LNAV/VNAV NA below -16°C (4°F) or above 54°C (130°F). Visibility reduction by helicopters NA. When local altimeter setting not received use Cleburne Rgnl altimeter setting and increase all DA/MDA 80 feet, increase LPV and LNAV/VNAV visibility ¼ mile all Cats.

MISSED APPROACH:
Climb to 3000 direct COMUB and via 265° track to CELTC and hold.

AWOS-3 118.725	FORT WORTH CENTER* 133.3 269.5	CTAF 122.9
--------------------------	--	----------------------



ELEV 686	TDZE 684
-----------------	-----------------



CATEGORY	A	B	C	D
LPV DA	934-1	250 (300-1)		NA
LNAV/VNAV DA	1004-1¼	320 (400-1¼)		NA
LNAV MDA	1320-1	636 (700-1)		NA
CIRCLING	1320-1	634 (700-1)		NA

SC-2, 25 FEB 2021 to 25 MAR 2021

SC-2, 25 FEB 2021 to 25 MAR 2021