

WAAS CH 56233 W31A	APP CRS 313°	Rwy Idg TDZE Apt Elev	5003 2818 2822
--	------------------------	-----------------------------	---

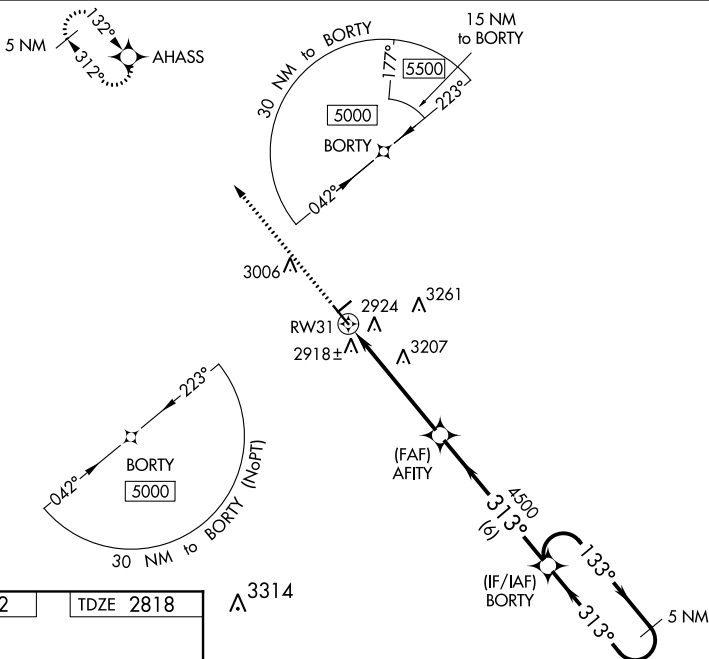
RNAV (GPS) RWY 31

WINKLER COUNTY (INK)

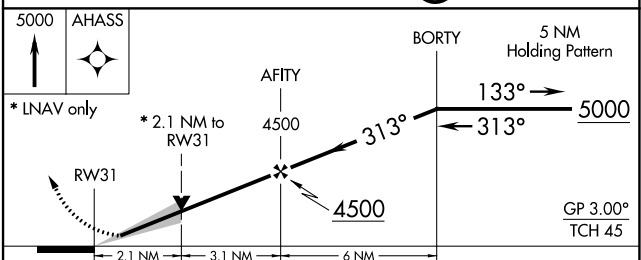
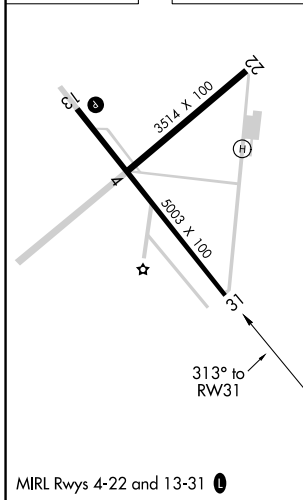
▼ Baro-VNAV NA when using Pecos altimeter setting. For uncompensated Baro-VNAV systems, LNAV/VNAV NA below -20°C (-4°F) or above 54°C (130°F). DME/DME RNP-0.3 NA. VDP NA with Pecos altimeter setting. When local altimeter setting not received, use Pecos altimeter setting and increase all DA 95 feet and all MDA 100 feet. Increase LPV all Cats visibility ¼ mile, LNAV/VNAV all Cats visibility ⅓ mile, LNAV Cat B visibility ¼ mile, LNAV Cat C visibility ½ mile and Circling Cats B and C visibility ¼ mile.

MISSED APPROACH:
Climb to 5000 direct AHASS and hold.

ASOS 118.325	FORT WORTH CENTER 133.1 298.95	UNICOM 123.0 (CTAF) 0
------------------------	--	---------------------------------



ELEV 2822	TDZE 2818
-----------	-----------



CATEGORY	A	B	C	D
LPV DA	3018-¾ 200 (200-¾)			NA
LNAV/VNAV DA	3130-1 312 (400-1)			NA
LNAV MDA	3520-1	702 (700-1)	3520-2 702 (700-2)	NA
CIRCLING	3520-1	698 (700-1)	3580-2¼ 758 (800-2¼)	NA

SC-3, 25 FEB 2021 to 25 MAR 2021

SC-3, 25 FEB 2021 to 25 MAR 2021