

LOC I-INT <b>110.3</b>	APP CRS <b>332°</b>	Rwy Idg <b>6655</b>
		TDZE <b>941</b>
		Apt Elev <b>969</b>

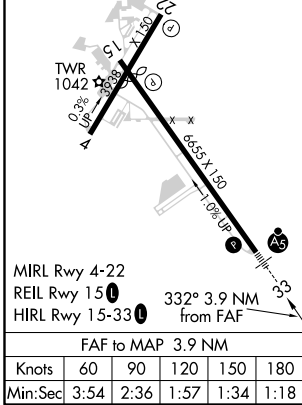
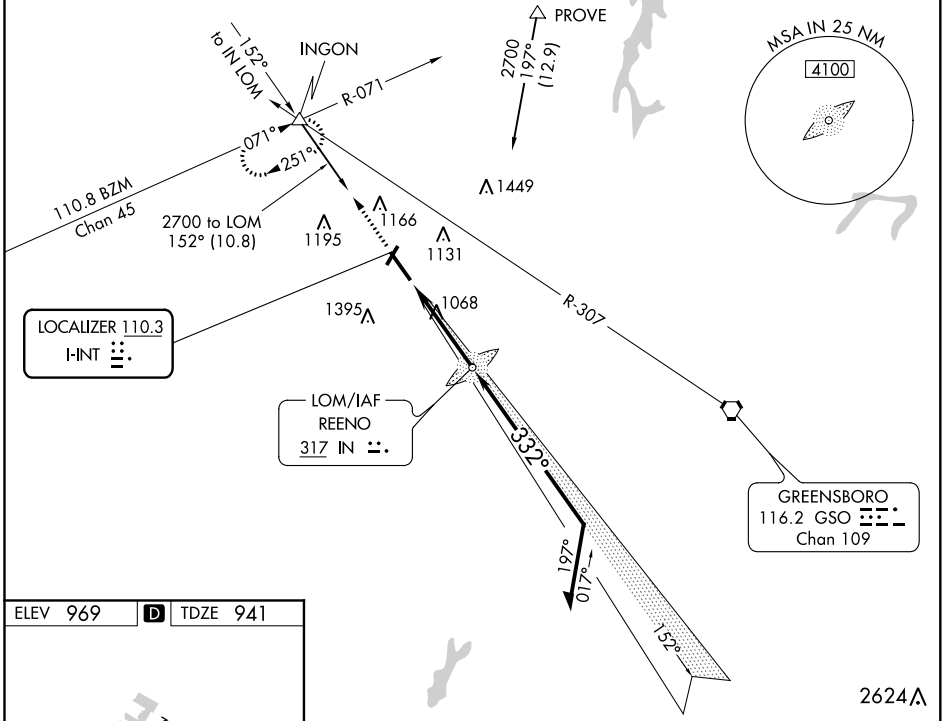
# ILS or LOC RWY 33

SMITH REYNOLDS (INT)

**⚠** For inoperative MALSRS, when using Piedmont Triad Intl altimeter setting, increase S-ILS 33 visibility to RVR 5000 all Cats. When local altimeter setting not received, use Piedmont Triad Intl altimeter setting and increase all DA 39 feet and all MDA 40 feet; increase S-LOC 33 Cat C visibility to RVR 4000 and Circling Cat D ¼ mile. ADF Required. Circling Rwy 4, 22 NA at night.

**MALSRS** **MISSED APPROACH:** Climb to 3500 via 332° bearing from REENO LOM to INGON INT and hold, continue climb-in-hold to 3500.

ATIS <b>121.3</b>	GREENSBORO APP CON <b>124.35 269.225</b>	WINSTON-SALEM TOWER ★ <b>123.75 (CTAF) 0 257.8</b>	GND CON <b>128.25</b>	UNICOM <b>122.95</b>
----------------------	---	---	--------------------------	-------------------------



3500	INGON	IN LOM	Remain within 10 NM	
↑	△	2212	2600	
IN 332°		152°	332°	
		2500	GS 3.00° TCH 57	
		3.9 NM		
CATEGORY	A	B	C	D
S-ILS 33		1141/24	200 (200-½)	
S-LOC 33		1320/24	379 (400-½)	NA
CIRCLING	1480-1 511 (600-1)	1580-1 611 (700-1)	1580-1¾ 611 (700-1¾)	NA

SE-2, 25 FEB 2021 to 25 MAR 2021

SE-2, 25 FEB 2021 to 25 MAR 2021