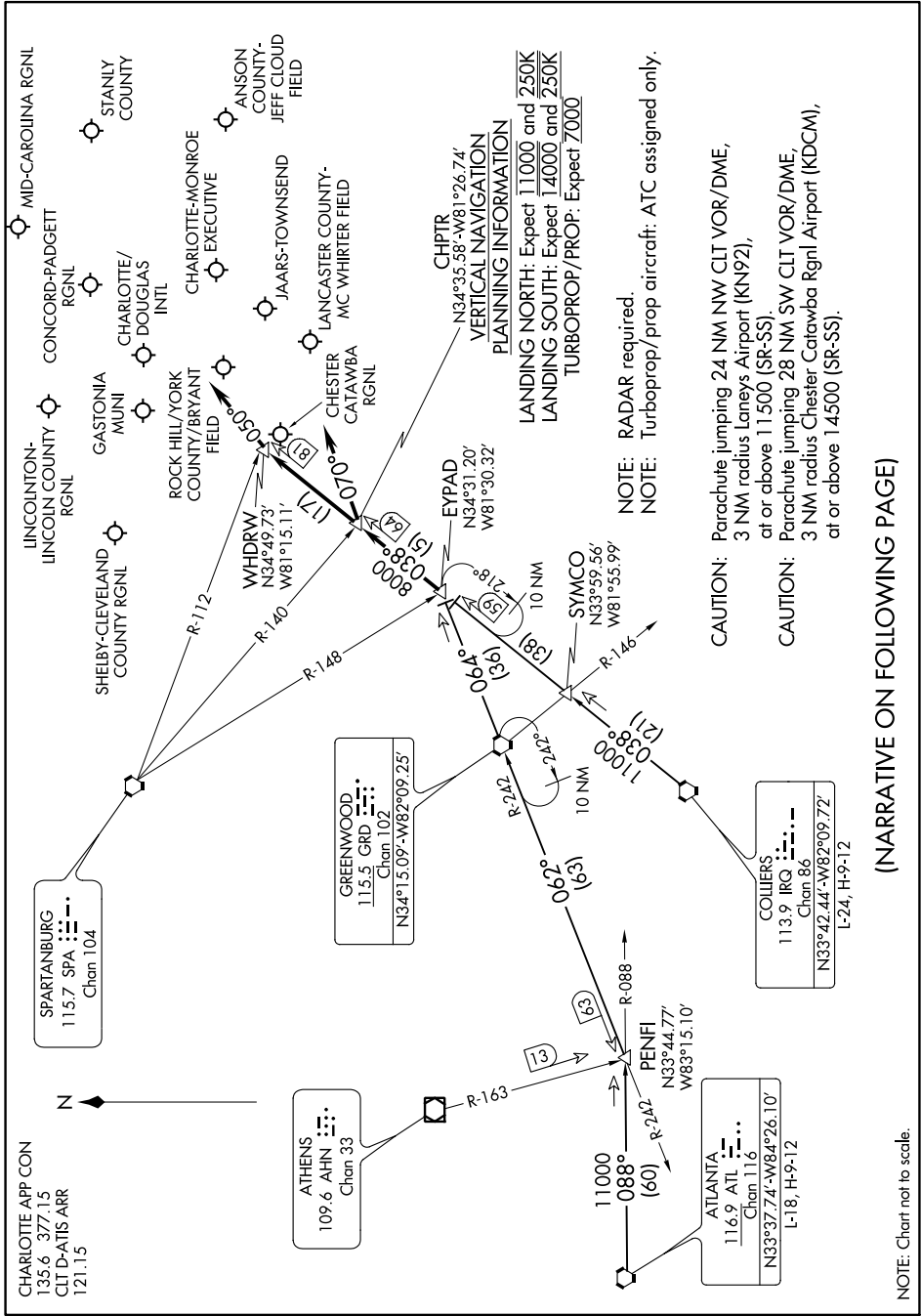


CHPTR THREE ARRIVAL

CHARLOTTE, NORTH CAROLINA

SE-2, 25 FEB 2021 to 25 MAR 2021



NOTE: RADAR required.
 NOTE: Turboprop/prop aircraft: ATC assigned only.

CAUTION: Parachute jumping 24 NM NW CLT VOR/DME,
 3 NM radius Laney's Airport (KN92),
 at or above 11 500 (SR-SS).

CAUTION: Parachute jumping 28 NM SW CLT VOR/DME,
 3 NM radius Chester Catawba Rgnl Airport (KDCM),
 at or above 14 500 (SR-SS).

(NARRATIVE ON FOLLOWING PAGE)

SE-2, 25 FEB 2021 to 25 MAR 2021

CHPTR THREE ARRIVAL

CHARLOTTE, NORTH CAROLINA

NOTE: Chart not to scale.