

WAAS CH 42915 W36A	APP CRS 004°	Rwy Idg 5201 TDZE 915 Apt Elev 924
--	------------------------	---

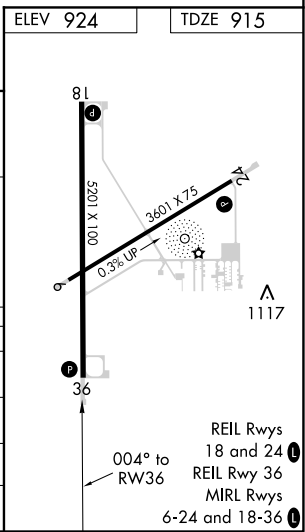
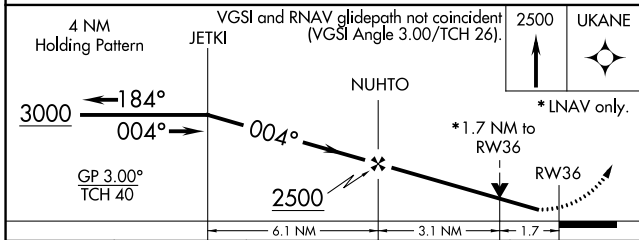
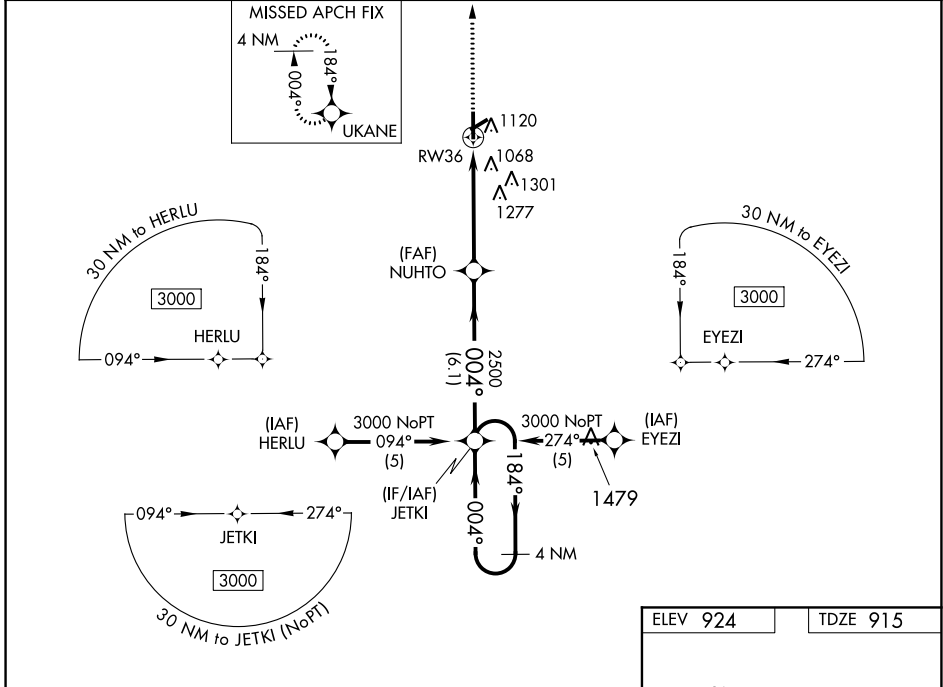
RNAV (GPS) RWY 36

KIRSCH MUNI (IRS)

▼ For uncompensated Baro-VNAV systems, LNAV/VNAV NA below -16°C (4°F) or above 47°C (116°F). DME/DME RNP-0.3 NA. Visibility reduction by helicopters NA. When local altimeter setting not received, use Three Rivers altimeter setting and increase all DA/MDA 40 feet, increase LNAV/VNAV all Cats and LNAV Cat C/D visibility ¼ mile. VDP NA when using Three Rivers altimeter setting. Baro-VNAV NA when using Three Rivers altimeter setting.

▲ MISSED APPROACH: Climb to 2500 direct UKANE and hold.

AWOS-3 121.325	GREAT LAKES APP CON * 121.2 239.25	CLNC DEL 118.325	UNICOM 123.05 (CTAF)
--------------------------	--	----------------------------	--------------------------------



CATEGORY	A	B	C	D
LPV DA	1178-1		263 (300-1)	
LNAV/VNAV DA	1354-1½		439 (500-1½)	
LNAV MDA	1480-1	565 (600-1)	1480-1½ 565 (600-1½)	1480-1¾ 565 (600-1¾)
CIRCLING	1480-1	556 (600-1)	1480-1½ 556 (600-1½)	1620-2¼ 696 (700-1¼)

EC-1, 25 FEB 2021 to 25 MAR 2021

EC-1, 25 FEB 2021 to 25 MAR 2021