

LOC/DME I-ISM 109.75 Chan 34 (Y)	APP CRS 153°	Rwy Idg 6001 TDZE 82 Apt Elev 82
--	------------------------	---

ILS or LOC RWY 15

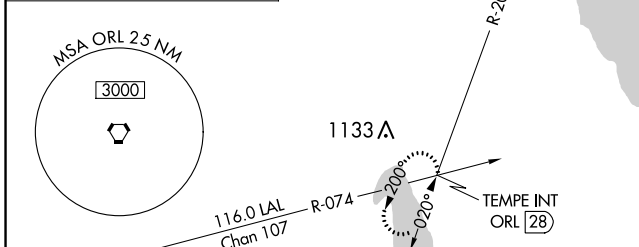
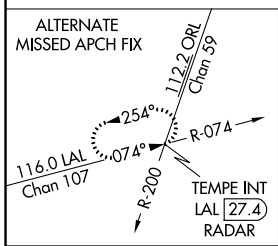
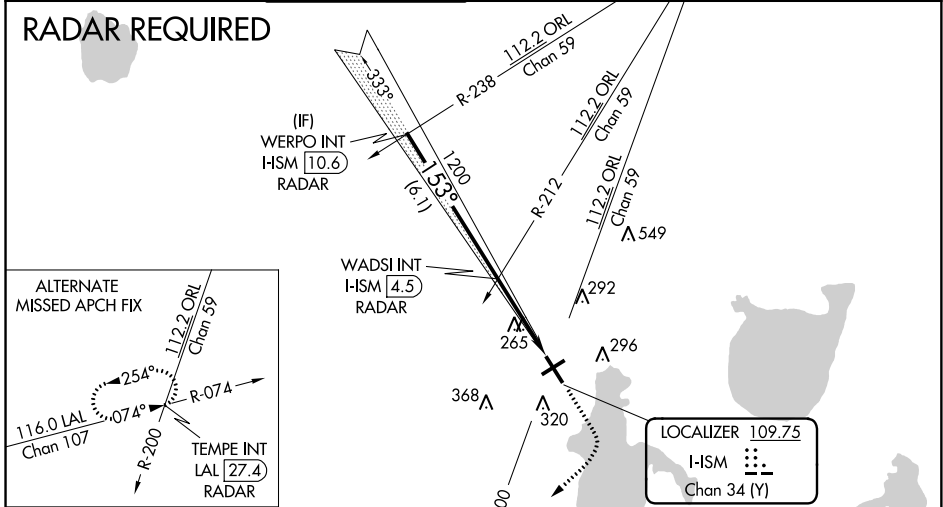
KISSIMMEE GATEWAY (ISM)

⚠ VDP NA with Orlando Intl altimeter setting. When local altimeter setting not received, use Orlando Intl altimeter setting and increase all DA to 309 and all MDAs 40 feet; increase Circling visibility Cat C ¼ mile.

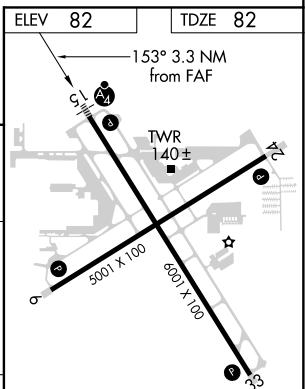
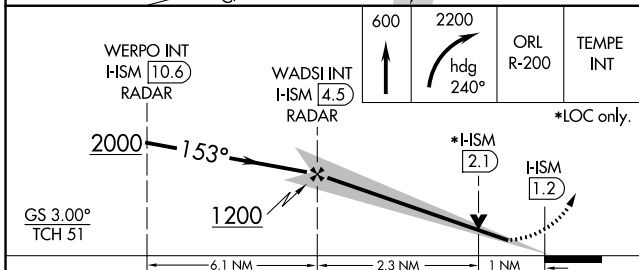
MALSF MISSED APPROACH: Climb to 600 then climbing right turn to 2200 on heading 240° and ORL VORTAC R-200 to TEMPE INT/ORL 28 DME and hold.

ATIS 128.775	ORLANDO APP CON 119.4 351.9	KISSIMMEE TOWER * 124.45 (CTAF) 0	CLNC DEL 121.7	CLNC DEL 119.95 (when twr closed)	GND CON 121.7	UNICOM 122.95
------------------------	---------------------------------------	--	--------------------------	--	-------------------------	-------------------------

RADAR REQUIRED



LOCALIZER 109.75
I-ISM
Chan 34 (Y)



GS 3.00° TCH 51	WERPO INT I-ISM 10.6 RADAR	WADSI INT I-ISM 4.5 RADAR	600	2200	ORL R-200	TEMPE INT
	2000	153°	1200	hdg 240°	*LOC only.	
	6.1 NM	2.3 NM	1 NM	I-ISM 2.1	HSM 1.2	
CATEGORY	A	B	C	D		
S-ILS 15	282-¾ 200 (200-¾)					
S-LOC 15	440-¾ 358 (400-¾)			440-1¼ 358 (400-1¼)		
CIRCLING	680-1 598 (600-1)		680-1½ 598 (600-1½)		680-2 598 (600-2)	

REIL Rwy 6, 24 and 33 **0**
MIRL Rwy 15-33 and 6-24 **0**

FAF to MAP 3.3 NM

Knots	60	90	120	150	180
Min:Sec	3:18	2:12	1:39	1:19	1:06

SE-3, 25 FEB 2021 to 25 MAR 2021

SE-3, 25 FEB 2021 to 25 MAR 2021