

WAAS CH 42900 W33A	APP CRS 333°	Rwy Idg TDZE 82 Apt Elev 82	6001
--	------------------------	---	-------------

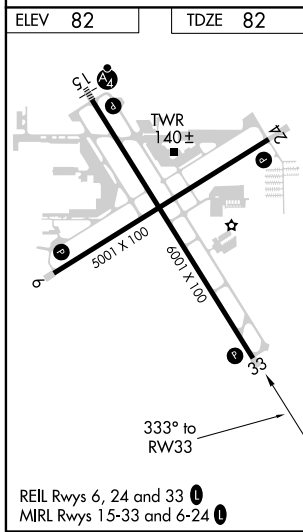
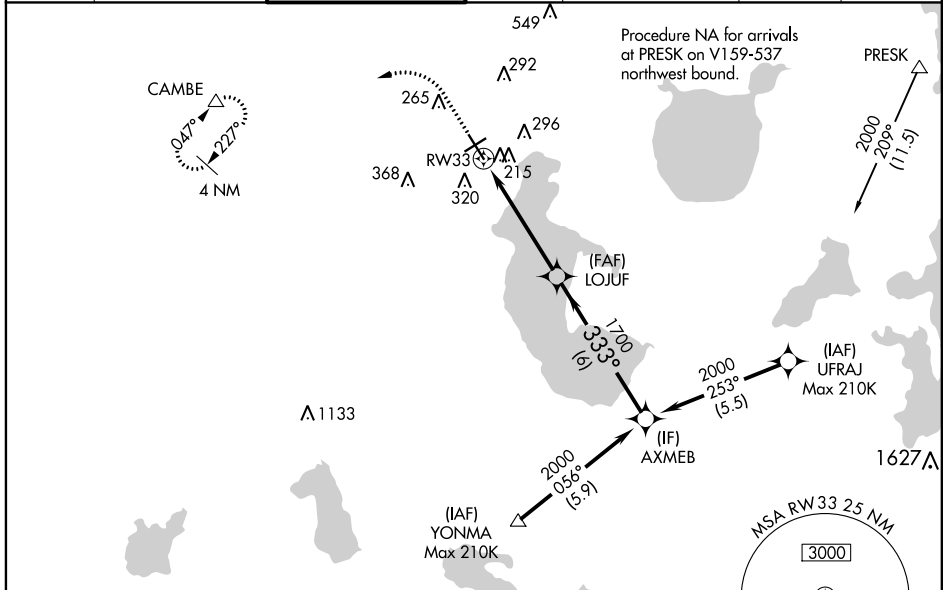
RNAV (GPS) RWY 33

KISSIMMEE GATEWAY (ISM)

⚠ Baro-VNAV NA when using Orlando Intl altimeter setting. For uncompensated Baro-VNAV systems, LNAV/VNAV NA below -15°C (5°F) or above 43°C (109°F). Helicopter visibility reduction below 3/4 SM NA. DME/DME RNP-0.3 NA. When local altimeter setting not received, use Orlando Intl altimeter setting and increase all DA 27 feet and all MDA 40 feet. Increase LNAV/VNAV all Cats visibility 1/8 mile and LNAV Cats C/D 1/4 mile.

MISSED APPROACH:
Climb to 540 then climbing left turn to 2000 direct CAMBE and hold.

ATIS 128.775	ORLANDO APP CON 119.4 351.9	KISSIMMEE TOWER ★ 124.45 (CTAF) 0	CLNC DEL 121.7	CLNC DEL 119.95 (when twr closed)	GND CON 121.7	UNICOM 122.95
------------------------	---------------------------------------	--	--------------------------	--	-------------------------	-------------------------



540	2000	CAMBE	LOJUF	AXMEB
↑	↶	△	1700	2000
RW33		333°		2000
5 NM		6 NM		GP 3.00° TCH 45
CATEGORY	A	B	C	D
LPV DA		332-1	250 (300-1)	
LNAV/VNAV DA		402-1	320 (400-1)	
LNAV MDA	480-1	398 (400-1)	480-1 1/8	398 (400-1 1/8)
CIRCLING	620-1	538 (600-1)	620-1 1/2	640-2 558 (600-2)

SE-3, 25 FEB 2021 to 25 MAR 2021

SE-3, 25 FEB 2021 to 25 MAR 2021