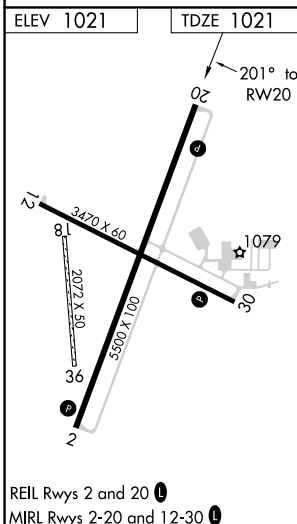
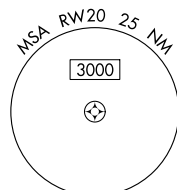
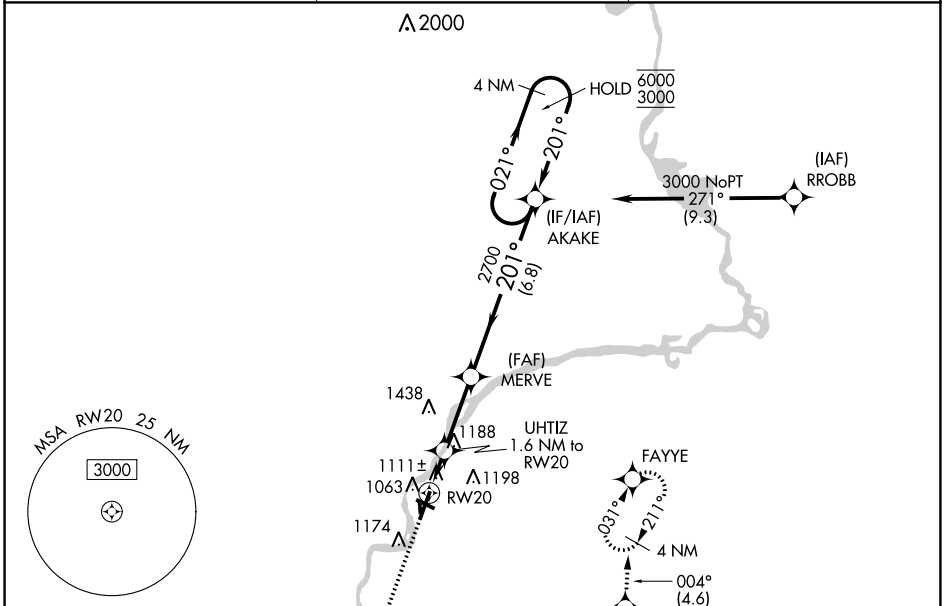


APP CRS	Rwy Idg	5500
201°	TDZE	1021
	Apt Elev	1021

RNAV (GPS) RWY 20

ALEXANDER FIELD SOUTH WOOD COUNTY (ISW)

<p>RNP APCH.</p> <p>▼ Circling NA to Rws 18 and 36. ▲ Rwy 20 helicopter visibility reduction below 1 SM NA. ▲ Straight-in Rwy 20 NA at night, Circling Rwy 20, 30 NA at night.</p>	<p>MISSED APPROACH: Climb to 3000 direct WEMUG and on track 117° to OCEDE and on track 049° to LHALL and on track 004° to FAYYE and hold.</p>	
<p>ASOS 126.575</p>	<p>MINNEAPOLIS CENTER 124.4 317.7</p>	<p>UNICOM 122.8 (CTAF) ①</p>



3000	WEMUG	tr 117°	OCEDE	tr 049°	LHALL	tr 004°	FAYYE	4 NM Holding Pattern
3000	RW20	UHTIZ 1.6 NM to RW20	MERVE	AKAKE				
	1640	≤ 3.50° TCH 42	2700	6000				
	1.6 NM	2.8 NM	6.8 NM					
CATEGORY	A	B	C	D				
LNAV MDA	1380-1 359 (400-1)							
☑ CIRCLING	1480-1 459 (500-1)	1560-1 539 (600-1)	1620-1½ 599 (600-1½)	1800-2½ 779 (800-2½)				

EC-3, 25 FEB 2021 to 25 MAR 2021

EC-3, 25 FEB 2021 to 25 MAR 2021