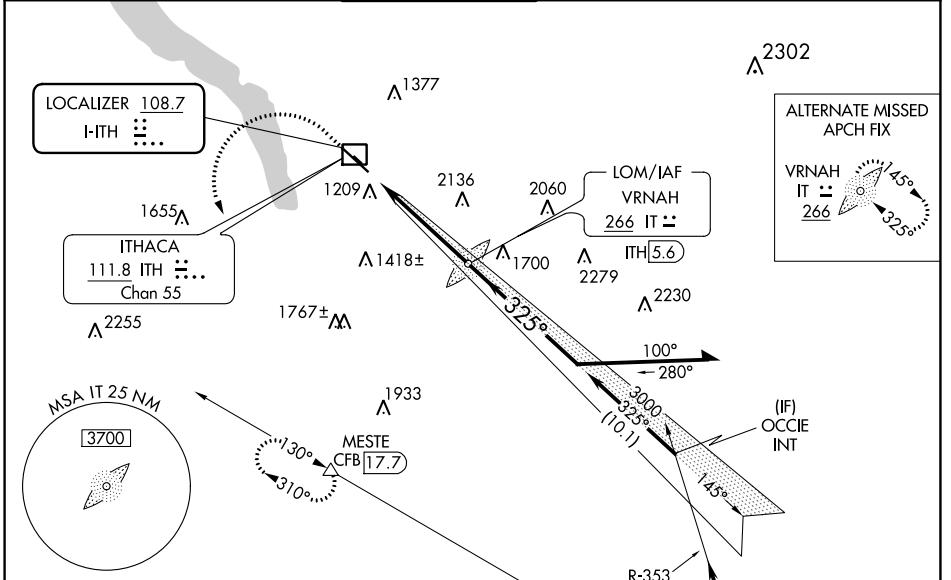


LOC I-ITH <b>108.7</b>	APP CRS <b>325°</b>	Rwy ldg TDZE Apt Elev	<b>6602</b> <b>1099</b> <b>1099</b>
---------------------------	------------------------	-----------------------------	---

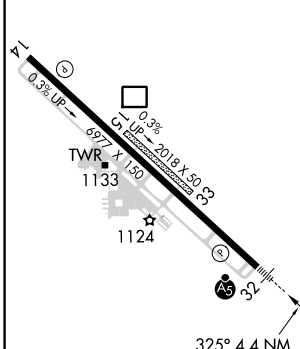
# ILS or LOC RWY 32

ITHACA TOMPKINS INTL (ITH)

DME required.		<p><b>MISSED APPROACH:</b> Climb to 2600 then climbing left turn to 4000 on heading 180° and CFB VOR/DME R-310 to MESTE/CFB VOR/DME 17.7 DME and hold.</p>	
<p><b>ILS</b> Circling NA to Rws 15 and 33. Inop table does not apply to S-ILS 32. When local altimeter setting not received, use Elmira altimeter setting and increase S-ILS 32 DA to 1433 feet and all MDA 100 feet; increase S-LOC 32 Cat C/D visibility ½ SM. DME from ITH DME. Simultaneous reception of I-ITH LOC and ITH DME required. For inop ALS when using Elmira altimeter setting increase S-ILS 32 all Cats visibility to RVR 5000.</p>		<p><b>MALSR</b> AS</p>	
ATIS <b>125.175</b>	ELMIRA APP CON * <b>124.3 257.8</b>	ITHACA TOWER * <b>119.6</b> (CTAF) <b>0</b>	GND CON <b>121.8</b>
CLNC DEL <b>121.8</b>		UNICOM <b>122.95</b>	

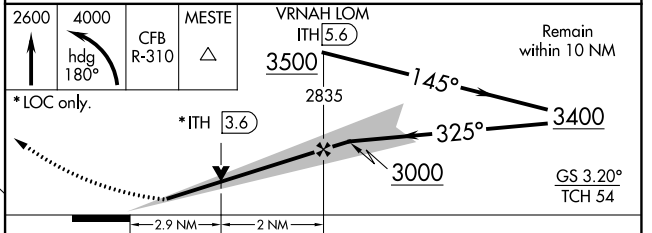


ELEV 1099	<b>D</b>	TDZE 1099
-----------	----------	-----------



Procedure NA for arrival on CFB VOR/DME airway radials 275 CW 015 and V374 northwest bound.

**IAF BINGHAMTON 112.2 CFB Chan 59**



CATEGORY	A	B	C	D
S-ILS 32	1349/40		250 (300-¾)	
S-LOC 32	2140/40 1041 (1100-¾)	2140/55 1041 (1100-1)	2140-2½	1041 (1100-2½)
<b>C</b> CIRCLING	2140-1¼ 1041 (1100-1¼)	2140-1½ 1041 (1100-½)	2140-3 1041 (1100-3)	2440-3 1341 (1400-3)

NE-2, 25 FEB 2021 to 25 MAR 2021

NE-2, 25 FEB 2021 to 25 MAR 2021