

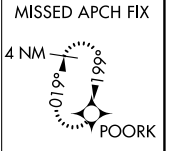
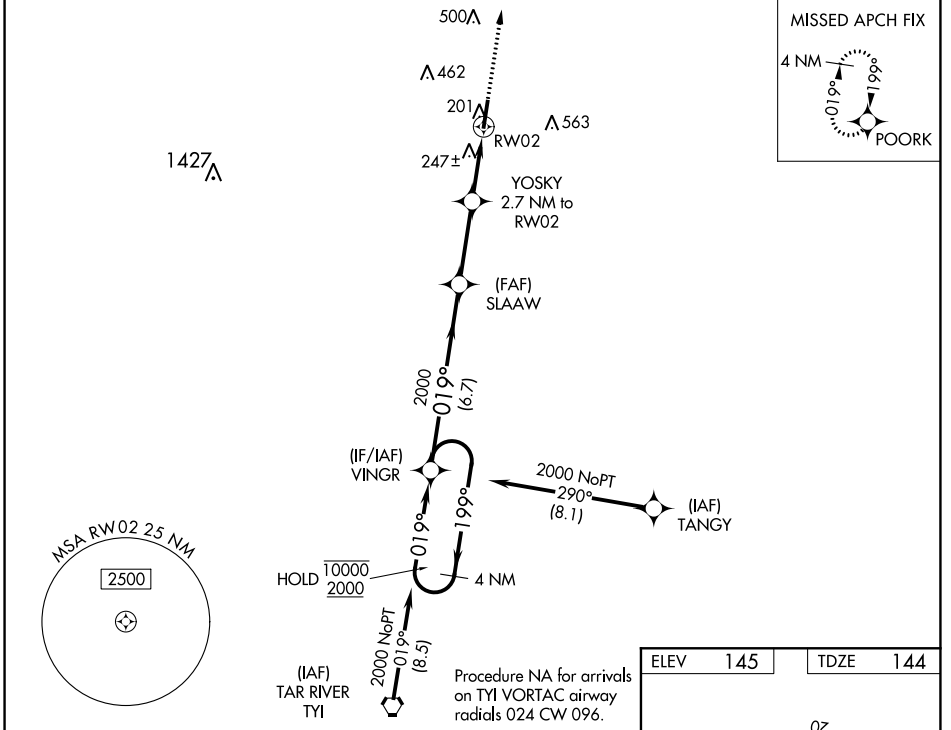
WAAS CH 78025 W02A	APP CRS 019°	Rwy Idg 5500 TDZE 144 Apt Elev 145
--	------------------------	---

RNAV (GPS) RWY 2

HALIFAX-NORTHAMPTON RGNL (IXA)

RNP APCH	Rwy 2 helicopter visibility reduction below 3/4 SM NA. For uncompensated Baro-VNAV systems, LNAV/VNAV NA below -15°C or above 54°C. Circling NA east of Rwys 2-20.	MISSED APPROACH: Climb to 2000 direct POORK and hold.
----------	--	---

AWOS-3PT 119.975	WASHINGTON CENTER 132.025 290.425	UNICOM 123.075 (CTAF)
----------------------------	---	---------------------------------

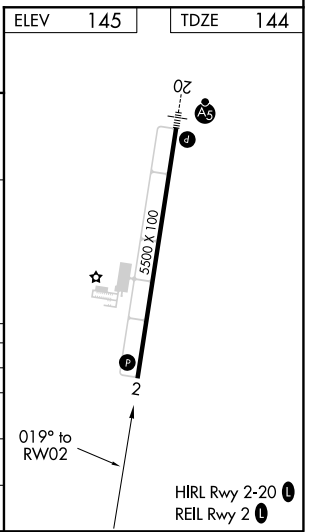
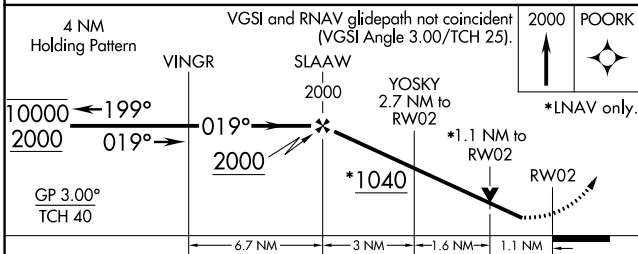


SE-2, 25 FEB 2021 to 25 MAR 2021

SE-2, 25 FEB 2021 to 25 MAR 2021

Procedure NA for arrivals on TYI VORTAC airway radials 024 CW 096.

ELEV	145	TDZE	144
------	-----	------	-----



CATEGORY	A	B	C	D
LPV DA		394-7/8	250 (300-7/8)	
LNAV/VNAV DA		433-1	289 (300-1)	
LNAV MDA		500-1	356 (400-1)	
CIRCLING	560-1	600-1	780-1 3/4	860-2 1/4
	415 (500-1)	455 (500-1)	635 (700-1 3/4)	715 (800-2 1/4)