

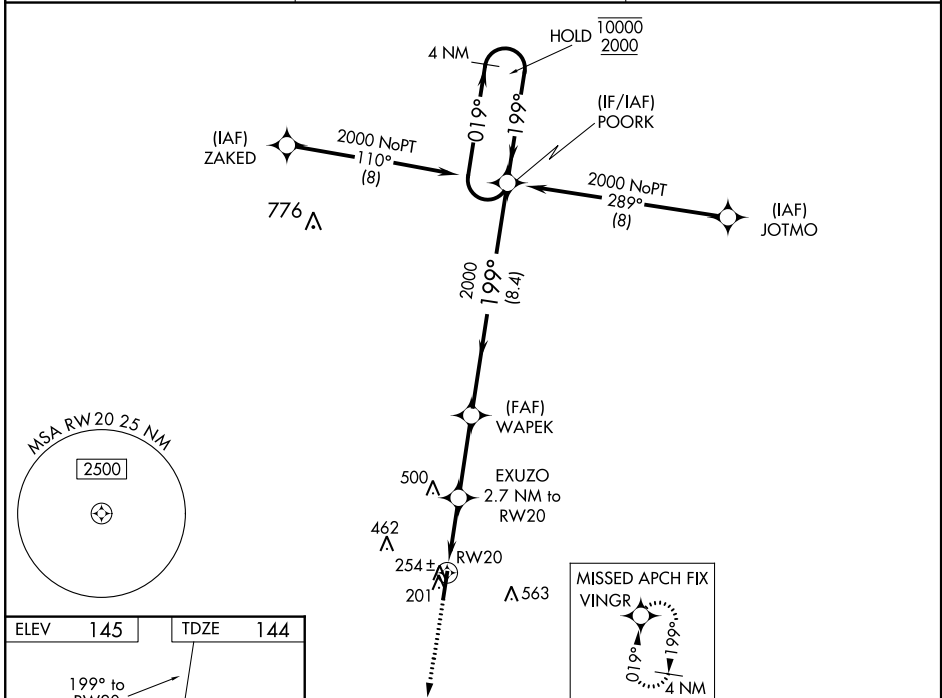
WAAS CH 72725 W20A	APP CRS 199°	Rwy Idg 5500 TDZE 144 Apt Elev 145
--	------------------------	---

RNAV (GPS) RWY 20

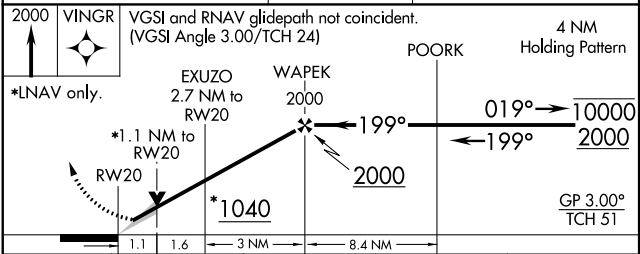
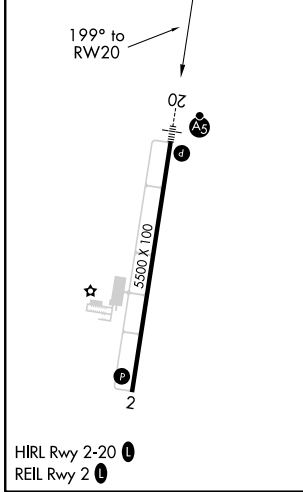
HALIFAX-NORTHAMPTON RGNL (IXA)

RNP APCH.		MALSR	MISSED APPROACH: Climb to 2000 direct VINGR and hold.
<p>For uncompensated Baro-VNAV systems, LNAV/VNAV NA below -1.5°C or above 54°C. Circling NA east of Rwy 2-20. For inop ALS increase LNAV/VNAV visibility all Cats to 3/8 SM and LNAV Cats C/D to 1 SM.</p>			

AWOS-3PT 119.975	WASHINGTON CENTER 132.025 290.425	UNICOM 123.075 (CTAF)
----------------------------	---	---------------------------------



ELEV 145	TDZE 144
----------	----------



CATEGORY	A	B	C	D
LPV DA		344-1/2	200 (200-1/2)	
LNAV/VNAV DA		420-1/2	276 (300-1/2)	
LNAV MDA	520-1/2	376 (400-1/2)	520-5/8	376 (400-5/8)
CIRCLING	560-1 415 (500-1)	600-1 455 (500-1)	780-13/4 635 (700-13/4)	860-21/4 715 (800-21/4)

SE-2, 25 FEB 2021 to 25 MAR 2021

SE-2, 25 FEB 2021 to 25 MAR 2021