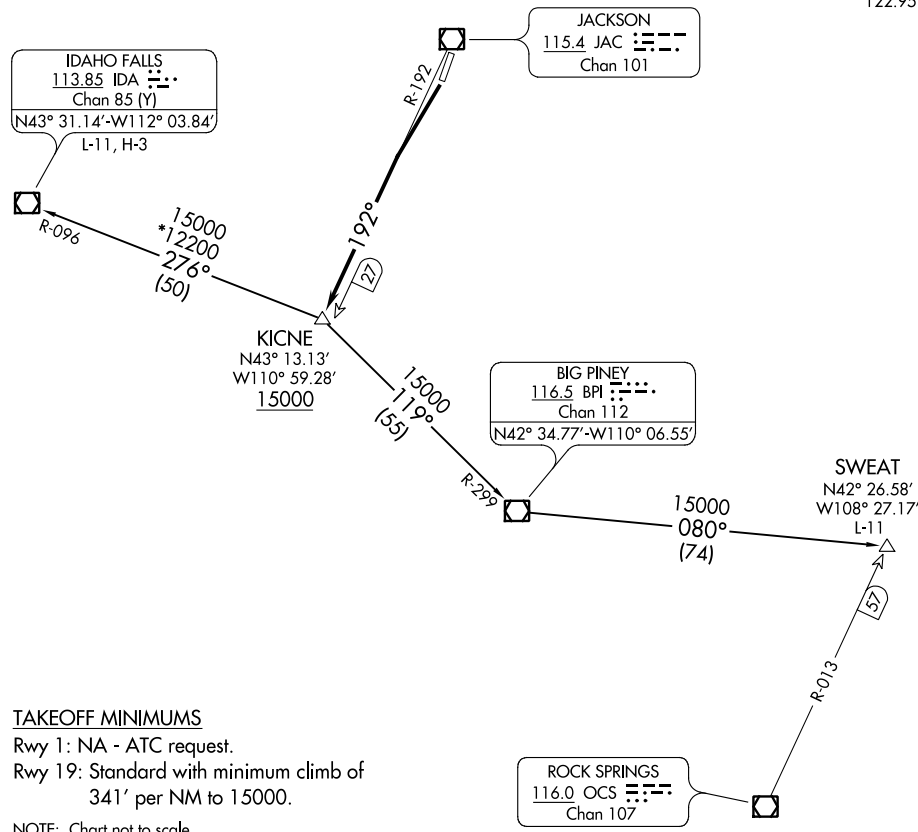


**TOP ALTITUDE:
ASSIGNED BY ATC**

SALT LAKE CENTER
133.25 285.6
CTAF
118.075
UNICOM
122.95



NW-1, 25 FEB 2021 to 25 MAR 2021

NW-1, 25 FEB 2021 to 25 MAR 2021

TAKEOFF MINIMUMS

Rwy 1: NA - ATC request.

Rwy 19: Standard with minimum climb of 341' per NM to 15000.

NOTE: Chart not to scale.

DEPARTURE ROUTE DESCRIPTION

TAKEOFF RUNWAY 19: Climb via JAC R-192 to cross KICNE INT/JAC 27 DME at or above 15000. Thence. . .

. . . via (transition) or (assigned route). Expect further clearance to filed altitude 10 minutes after departure.

IDAHO FALLS TRANSITION (ALPIN2.IDA): From over KICNE INT via IDA R-096 to IDA VOR/DME.

SWEAT TRANSITION (ALPIN2.SWEAT): From over KICNE INT via BPI R-299 to BPI VOR/DME, then via BPI R-080 to SWEAT INT.