

LOC/DME I-JAC 109.1 Chan 28	APP CRS 187°	Rwy Idg TDZE Apt Elev	6300 6451 6451
--	------------------------	-----------------------------	---

ILS Z or LOC Z RWY 19

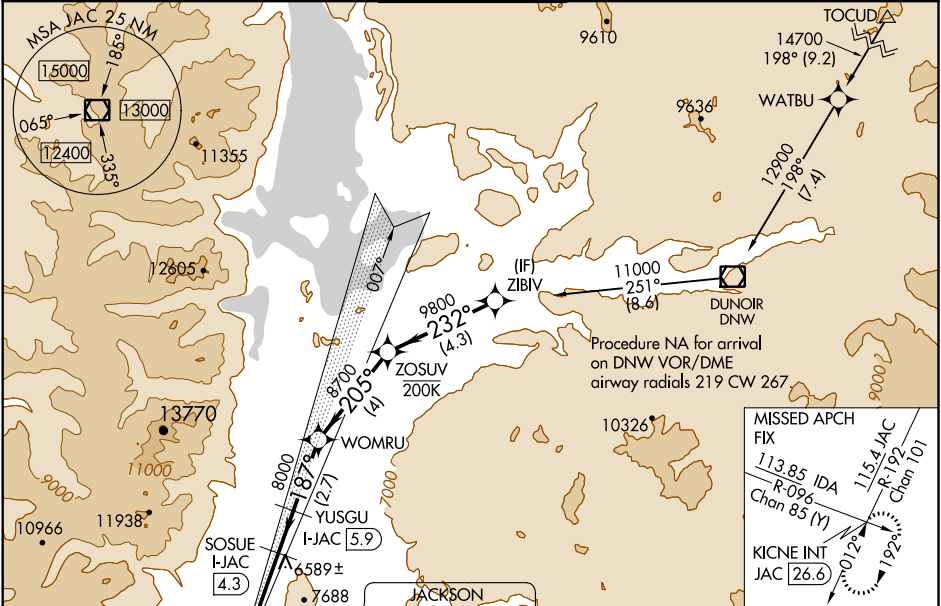
JACKSON HOLE (JAC)

RNAV 1-GPS Required. DME required for LOC only.

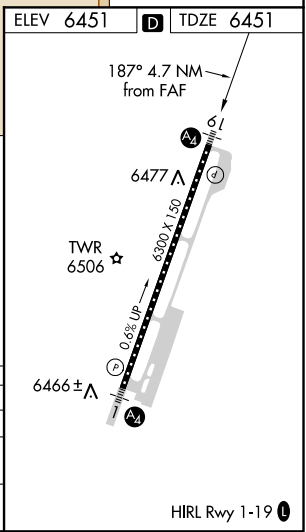
NA Circling NA east of Rwy 1-19.
For inop ALS, increase S-LOC 19# Cat A/B RVR to 5500 and Cat C/D RVR to 6000.
Inop table does not apply to S-ILS 19#.

MALS
MISSED APPROACH: Climb to 6900 then climbing right turn to 14000 on JAC VOR/DME R-192 to KICNE INT/JAC 26.6 DME and hold, continue climb-in-hold to 14000. #MISSED approach requires minimum climb of 235 feet per NM to 10600.

ATIS* 120.625	SALT LAKE CENTER 133.25 285.6	JACKSON TOWER* 118.075 (CTAF)	GND CON 124.55	UNICOM 122.95
-------------------------	---	---	--------------------------	-------------------------



ELEV 6451	TDZE 6451
6900	14000
JAC R-192	KICNE INT
SOSUE I-JAC 4.3	YUSGU I-JAC 5.9
I-JAC 1.2	I-JAC 2.3
*LOC only	
1.1	2 NM
1.6 NM	2.7 NM
4 NM	4.3 NM
GS 3.00°	TCH 50
CATEGORY	A
S-ILS 19 #	6651/40
S-LOC 19 #	6840/40 389 (400-3/4)
CIRCLING	6840-1 389 (400-1)
	6920-1 469 (500-1)
	6920-1 1/2 469 (500-1 1/2)
	7080-2 629 (700-2)



NW-1, 25 FEB 2021 to 25 MAR 2021

NW-1, 25 FEB 2021 to 25 MAR 2021