

APP CRS Rwy Idg **6300**  
 187° TDZE **6451**  
 Apt Elev **6451**

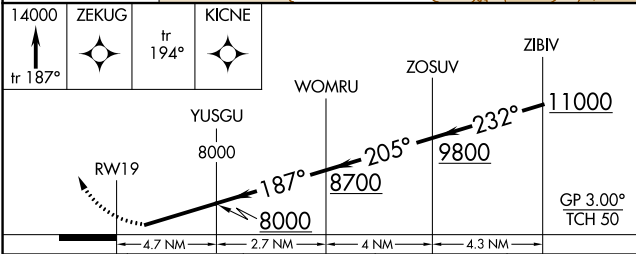
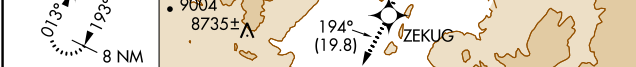
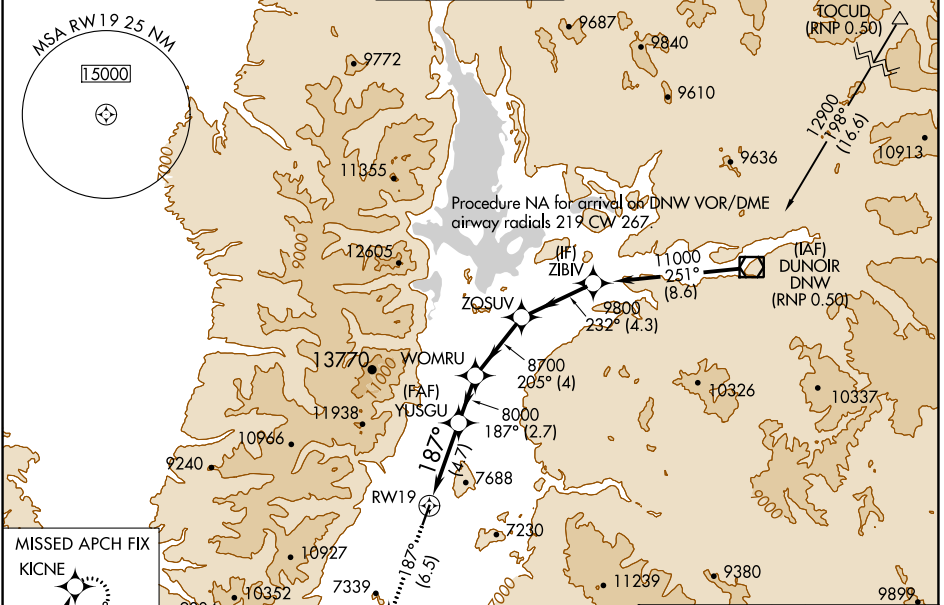
# RNAV (RNP) Y RWY 19

JACKSON HOLE (JAC)

RNP AR APCH.  
 For uncompensated Baro-VNAV systems, procedure NA below -27°C or above 54°C. For inop ALS, increase RNP 0.30 all Cats visibility to 1 3/8 SM. For inop ALS, increase RNP 0.11\* all Cats visibility to RVR 4500.

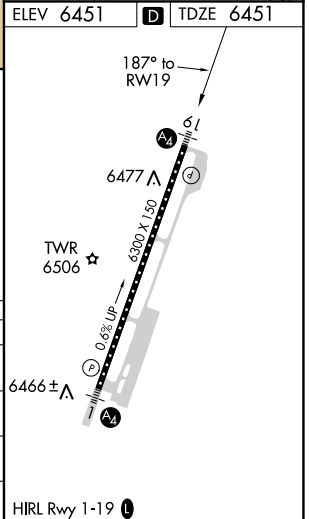
MALS  
 MISSED APPROACH: Climb to 14000 on track 187° to ZEKUG and on track 194° to KICNE and hold, continue climb-in-hold to 14000.  
 \* Missed approach requires minimum climb of 250 feet per NM to 8200.  
 # Missed approach requires minimum climb of 330 feet per NM to 8200.

|                         |   |   |                          |                         |
|-------------------------|---|---|--------------------------|-------------------------|
| ATIS*<br><b>120.625</b> | SALT LAKE CENTER<br><b>133.25 285.6</b> | JACKSON TOWER*<br><b>118.075 (CTAF)</b> | GND CON<br><b>124.55</b> | UNICOM<br><b>122.95</b> |
|-------------------------|---|---|--------------------------|-------------------------|



| CATEGORY     | A | B       | C             | D |
|--------------|---|---------|---------------|---|
| RNP 0.11 DA* |   | 6750/40 | 299 (300-3/4) |   |
| RNP 0.30 DA# |   | 6826/40 | 375 (400-3/4) |   |
| RNP 0.30 DA  |   | 6911/55 | 460 (500-1)   |   |

## AUTHORIZATION REQUIRED



NW-1, 25 FEB 2021 to 25 MAR 2021

NW-1, 25 FEB 2021 to 25 MAR 2021