


| | | |
|--|------------------------|---|
| WAAS CH 58299 W01A | APP CRS 006° | Rwy Idg 6300 TDZE 6431 Apt Elev 6451 |
|--|------------------------|---|

RNAV (GPS) X RWY 1

JACKSON HOLE (JAC)

⚠ Circling NA east of Rwy 1-19. Inoperative table does not apply. If local altimeter setting not received, procedure NA. For uncompensated Baro-VNAV systems, LNAV/VNAV NA below -27°C (-16°F) or above 46°C (114°F). DME/DME RNP-0.3 NA.

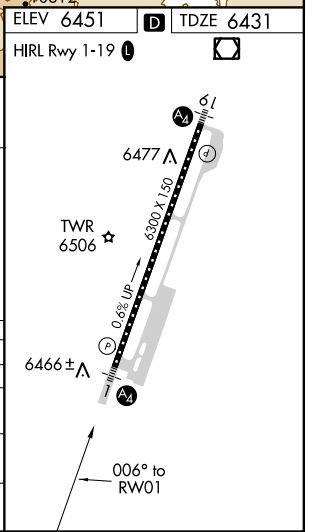
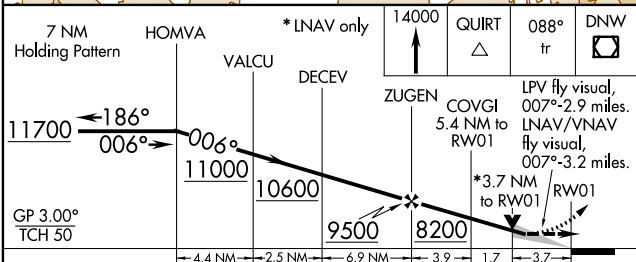
MALS  MISSED APPROACH: Climb to 14000 direct QUIRT and via 088° track to DNV VOR/DME and hold, continue climb-in-hold to 14000.

⚠ -21°C

| | | | | |
|-------------------------|---|--|--------------------------|-------------------------|
| ATIS* 120.625 | SALT LAKE CENTER 133.25 285.6 | JACKSON TOWER* 118.075 (CTAF)  | GND CON 124.55 | UNICOM 122.95 |
|-------------------------|---|--|--------------------------|-------------------------|



| | |
|--|---|
| ELEV 6451 |  TDZE 6431 |
| HIRL Rwy 1-19  |  |



| CATEGORY | A | B | C | D |
|--------------|---------------------------|---------------------------|--------|---------------|
| LPV DA | | 7393-2 | | 962 (1000-2) |
| LNAV/VNAV DA | 7470-2 | 1039 (1100-2) | 7470-3 | 1039 (1100-3) |
| LNAV MDA | 7640-1¼ 1209 (1200-1¼) | 7640-1½ 1209 (1200-1½) | 7640-3 | 1209 (1200-3) |
| CIRCLING | 7640-1¼ 1189 (1200-1¼) | 7640-1½ 1189 (1200-1½) | 7640-3 | 1189 (1200-3) |

NW-1, 25 FEB 2021 to 25 MAR 2021

NW-1, 25 FEB 2021 to 25 MAR 2021