

WAAS CH <b>87013</b> <b>W18A</b>	APP CRS <b>177°</b>	Rwy Idg TDZE Apt Elev	<b>5500</b> <b>213</b> <b>213</b>
----------------------------------------	------------------------	-----------------------------	-----------------------------------------

# RNAV (GPS) RWY 18

JASPER COUNTY-BELL FIELD (JAS)

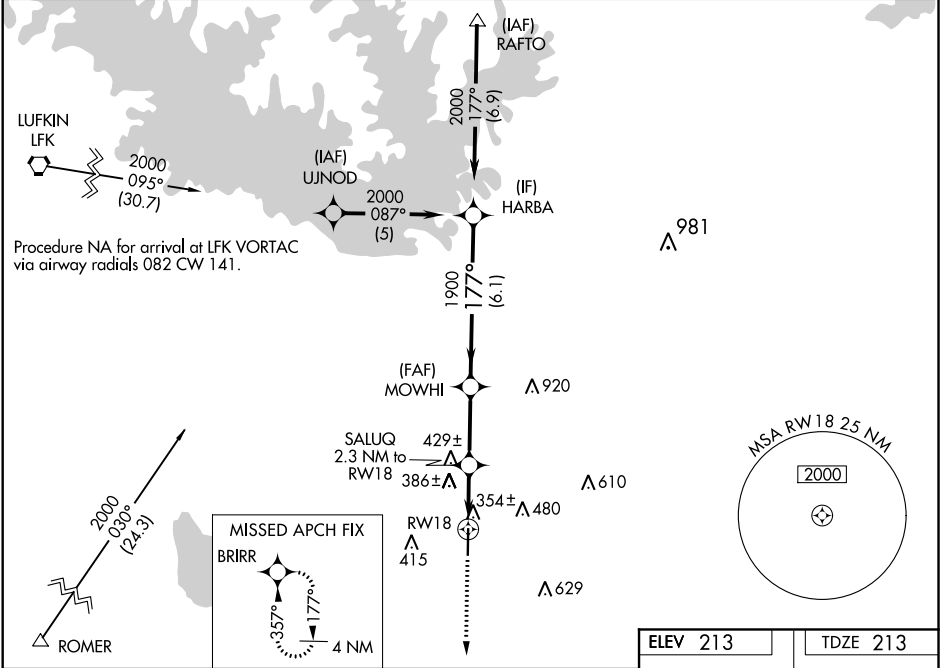
**▼** Baro-VNAV NA when using De Ridder altimeter setting. For uncompensated Baro-VNAV systems, LNAV/VNAV NA below -15°C (5°F) or above 54°C (130°F). DME/DME RNP-0.3 NA.  
**▲** Visibility reduction by helicopters NA. VDP NA when using De Ridder altimeter setting.  
 When local altimeter setting not received, use De Ridder altimeter setting and increase all DA 85 feet, all MDA 100 feet, increase LPV all Cats visibility ¼ mile, LNAV/VNAV all Cats visibility ½ mile, LNAV Cat C visibility ¼ mile, Circling Cat C ¼ mile.

**MISSED APPROACH:**  
Climb to 3000 direct BRIRR and hold.

AWOS-3  
**118.375**

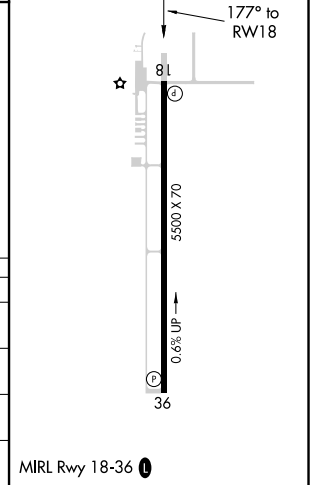
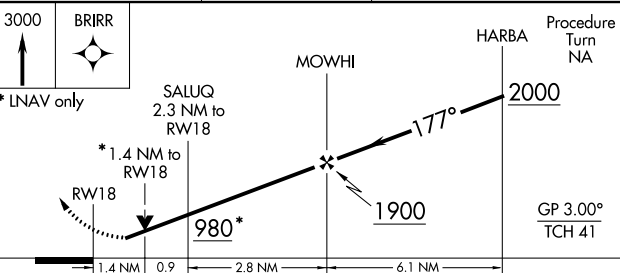
HOUSTON CENTER  
**126.95 363.05**

UNICOM  
**122.8 (CTAF) 0**



Procedure NA for arrival at LFK VORTAC via airway radials 082 CW 141.

ELEV 213	TDZE 213
----------	----------



CATEGORY	A	B	C	D
LPV DA	567-1¼ 354 (400-1¼)			NA
LNAV/VNAV DA	730-1¾ 517 (600-1¾)			NA
LNAV MDA	700-1	487 (500-1)	700-1¼ 487 (500-1¼)	NA
CIRCLING	740-1	527 (600-1)	740-1½ 527 (600-1½)	NA

MIRL Rwy 18-36 0

SC-5, 25 FEB 2021 to 25 MAR 2021

SC-5, 25 FEB 2021 to 25 MAR 2021