

WAAS CH 77736 W23A	APP CRS 242°	Rwy Idg TDZE Apt Elev	4000 1180 1180
--	------------------------	-----------------------------	---

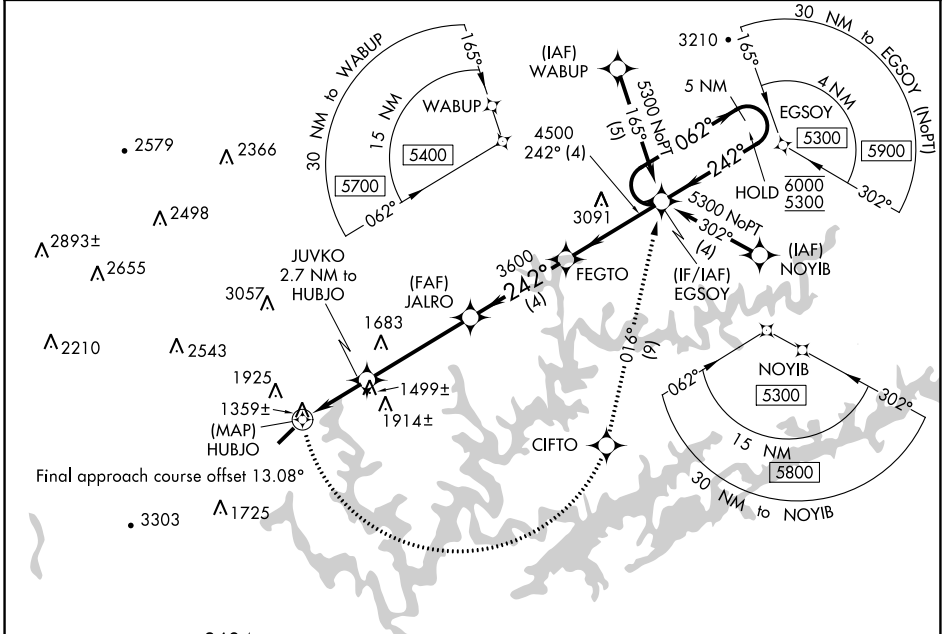
RNAV (GPS) RWY 23

COLONEL TOMMY C STINER AIRFIELD (JAU)

RNP APCH. MISSED APPROACH: Climbing left turn to 5300 direct CIFTO and on track 016° to EGSOY and hold, continue climb-in-hold to 5300.

▼ Circling NA northwest of Rwy 5-23.
Rwy 23 helicopter visibility reduction below 3/4 SM NA.

AWOS-3 124.975	ATLANTA CENTER 133.6 254.3	UNICOM 122.8 (CTAF) 0
--------------------------	--------------------------------------	---------------------------------

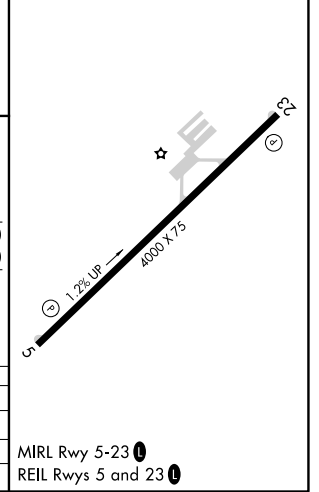


SE-1, 25 FEB 2021 to 25 MAR 2021

SE-1, 25 FEB 2021 to 25 MAR 2021

ELEV 1180	TDZE 1180
-----------	-----------

5300	CIFTO	tr 016°	EGSOY	Visual Segment - Obstacles.
				5 NM Holding Pattern
CATEGORY	A	B	C	D
LP MDA	1640-1	460 (500-1)		NA
LNVA MDA	1920-1	740 (800-1)		NA
CIRCLING	1920-1	740 (800-1)		NA



MIRL Rwy 5-23 0
REIL Rwy 5 and 23 0