

# HI-ILS or LOC RWY 26

LOC I-PEK <b>110.3</b>	APCH CRS <b>257°</b>	Rwy Ldg TDZE Arprt Elev <b>10,000</b> <b>27</b> <b>29</b>
---------------------------	-------------------------	--

JAL-5570 [USAF]

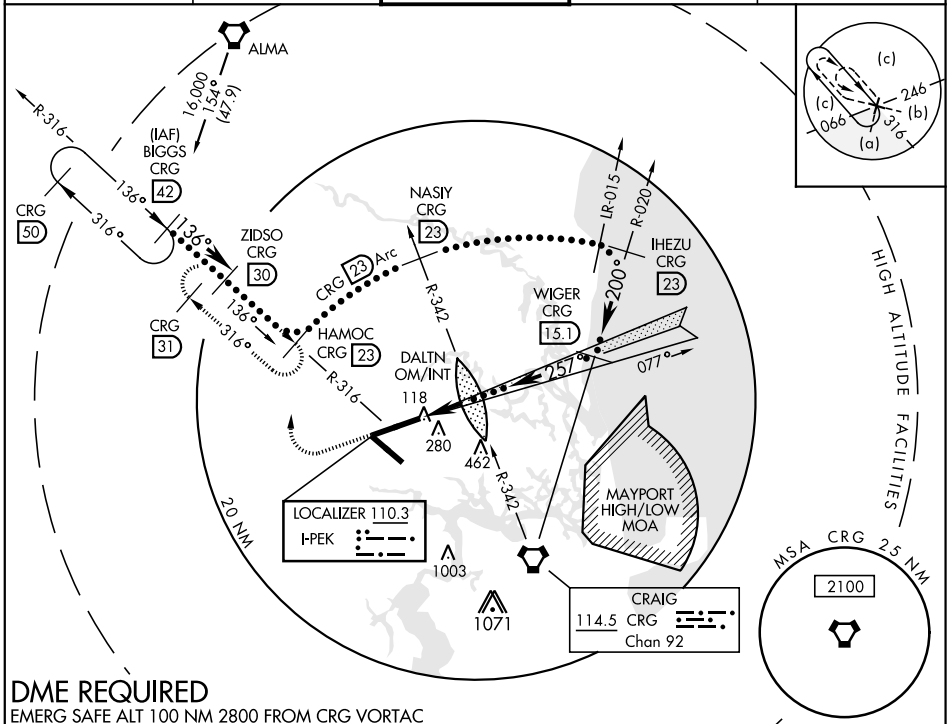
JACKSONVILLE INTL (KJAX)

▼ \* When ALS inop, increase RVR to 40, vis to ¾ mile.  
 \*\* When ALS inop, increase vis to 1 ½ miles.  
 \*\*\* When ALS inop, increase RVR to 55, vis to 1 mile.



MISSED APPROACH: Climb to 1200 then climbing right turn to 4000 on heading 360° and CRG R-316 to HAMOC 23 DME and hold, continue climb-in-hold to 4000.

ATIS <b>125.85</b>	JACKSONVILLE APP CON <b>119.0 269.9</b>	JACKSONVILLE TOWER <b>118.3 317.7</b>	GND CON <b>121.9 348.6</b>	CLNC DEL <b>119.5 290.275</b>
-----------------------	--	--	-------------------------------	----------------------------------

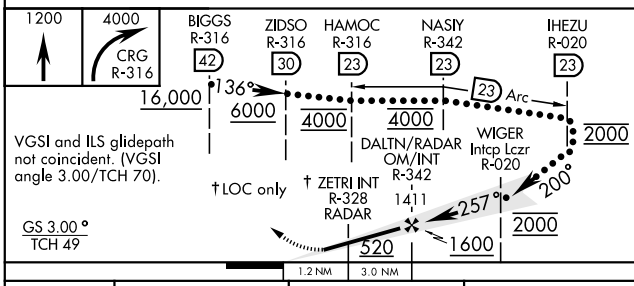


SE-3, 25 FEB 2021 to 25 MAR 2021

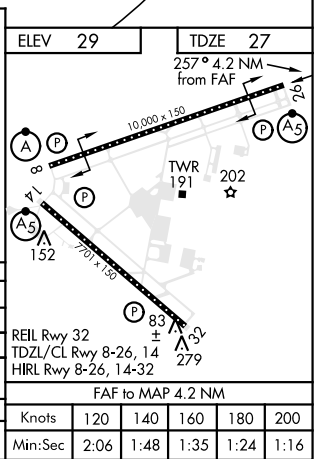
SE-3, 25 FEB 2021 to 25 MAR 2021

## DME REQUIRED

EMERG SAFE ALT 100 NM 2800 FROM CRG VORTAC



CATEGORY	C	D	E
S-ILS 26*		227/18	200 (200-¾)
S-LOC 26**		520/50	493 (500-1)
CIRCLING	520-1½ 491 (500-1½)	640-2 611 (700-2)	760-2½ 731 (800-2½)
ZETRI FIX MINIMUMS (DUAL VOR RECEIVERS REQUIRED)			
*** S-LOC 26 †	400/35	373 (400-¾)	



# HI-ILS or LOC RWY 26