

HI-ILS or LOC RWY 8

LOC I-JAX 110.7	APCH CRS 077°	Rwy Idg THRE 29 Arprt Elev 29
---------------------------	-------------------------	---

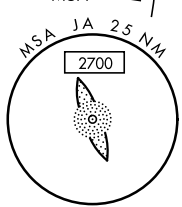
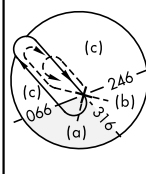
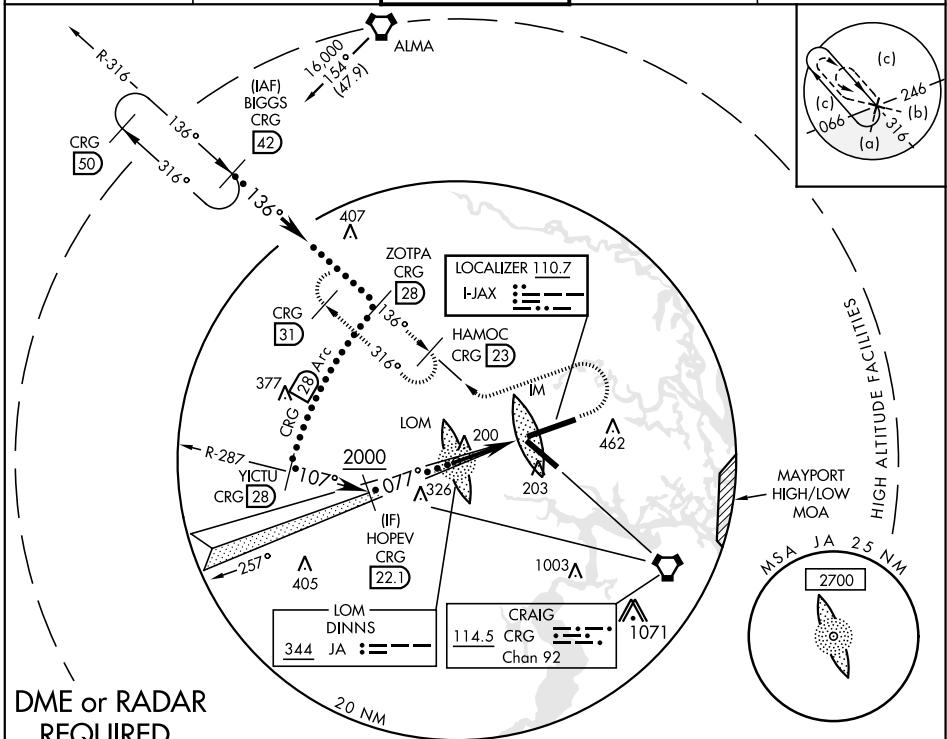
JAL-5570 [USAF]

JACKSONVILLE INTL (KJAX)

ALSIF-2
MISSED APPROACH: Climb to 1000 then climbing left turn to 4000 on heading 250° and CRG R-316 to HAMOC/CRG 23 DME and hold, continue climb-in-hold to 4000.

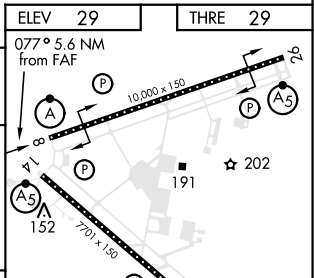
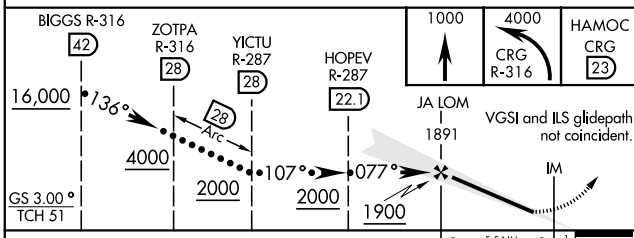
* When ALS inop, increase RVR to 40, vis to ¾ mile.
** When ALS inop, increase vis to 1½ miles.

ATIS 125.85	JACKSONVILLE APP CON 119.0 269.9	JACKSONVILLE TOWER 118.3 317.7	GND CON 121.9 348.6	CLNC DEL 119.5 290.275
-----------------------	--	--	-------------------------------	----------------------------------



DME or RADAR REQUIRED

EMERG SAFE ALT 100 NM 2800



CATEGORY	C	D	E
S-ILS 8 *	229/18	200 (200-½)	
S-LOC 8 **	480/45	451 (500-¾)	
CIRCLING	520-1½ 491 (500-1½)	640-2 611 (700-2)	760-2½ 731 (800-2½)

ELEV 29	THRE 29
077° 5.6 NM from FAF	
FAF to MAP 5.6 NM	
Knots	120 140 160 180 200
Min:Sec	2:48 2:24 2:06 1:52 1:41

HI-ILS or LOC RWY 8

SE-3, 25 FEB 2021 to 25 MAR 2021

SE-3, 25 FEB 2021 to 25 MAR 2021