

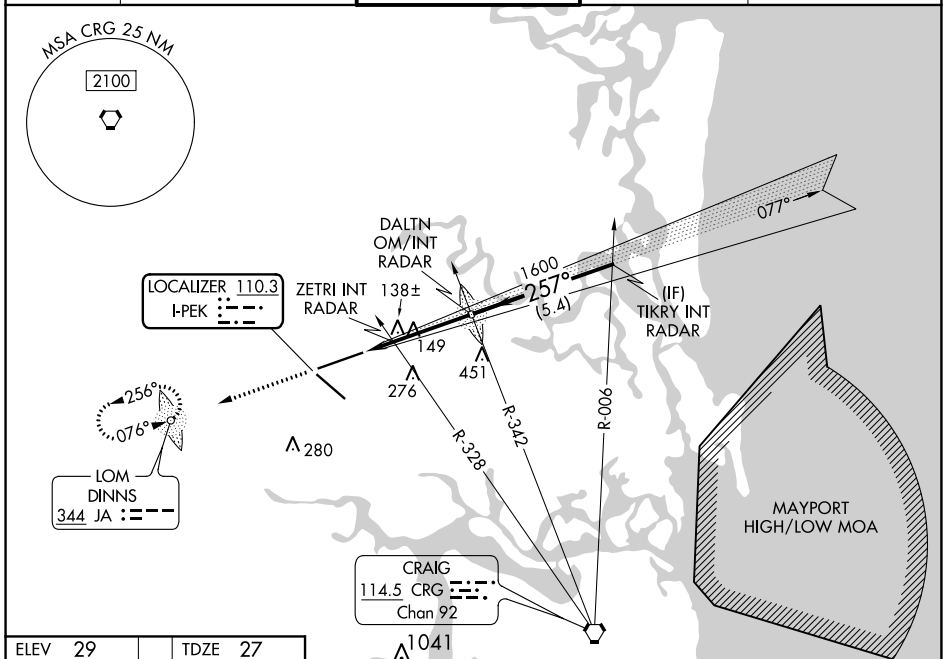
LOC I-PEK 110.3	APP CRS 257°	Rwy ldg 10000 TDZE 27 Apt Elev 29
---------------------------	------------------------	--

ILS or LOC RWY 26

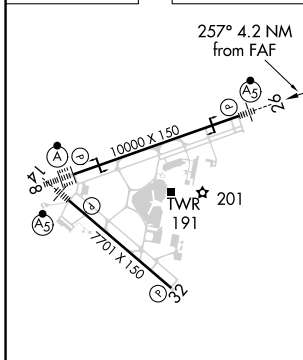
JACKSONVILLE INTL (JAX)

ADF required. RADAR required for procedure entry.		MALSR 	MISSED APPROACH: Climb to 3000 direct DINNS LOM and hold, continue climb-in-hold to 3000.
▼ For inop ALS, increase S-LOC 26 Cats C/D visibility to 1½ SM. ZETRI Fix Minimums: increase S-LOC 26 Cats C/D visibility to RVR 5500.			

D-ATIS 125.85	JACKSONVILLE APP CON 119.0 269.9	JACKSONVILLE TOWER 118.3 317.7	GND CON 121.9 348.6	CLNC DEL 119.5 290.275
-------------------------	--	--	-------------------------------	----------------------------------



ELEV 29	TDZE 27
---------	---------



3000	DINNS	VGSI and ILS glidepath not coincident (VGSI Angle 3.00/TCH 70).	TIKRY INT RADAR	
*LOC only.	ZETRI INT RADAR	1417	2000	
		*520	1600	
	-1.2 NM	3 NM	5.4 NM	
CATEGORY	A	B	C	D
S-ILS 26	227/18 200 (200-½)			
S-LOC 26	520/24	493 (500-½)	520/50	493 (500-1)
CIRCLING	520-1	491 (500-1)	520-1½	640-2 491 (500-1½) 611 (700-2)
ZETRI FIX MINIMUMS (DUAL VOR RECEIVERS REQUIRED)				
S-LOC 26	400/24	373 (400-½)	400/35	373 (400-¾)
CIRCLING	520-1	491 (500-1)	520-1½	640-2 491 (500-1½) 611 (700-2)

SE-3, 25 FEB 2021 to 25 MAR 2021

SE-3, 25 FEB 2021 to 25 MAR 2021