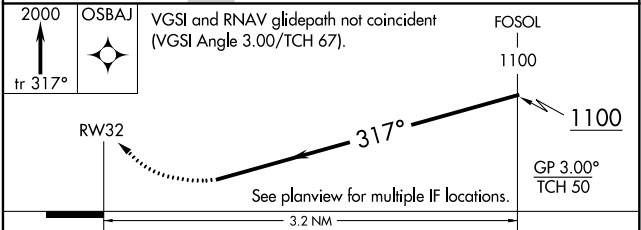
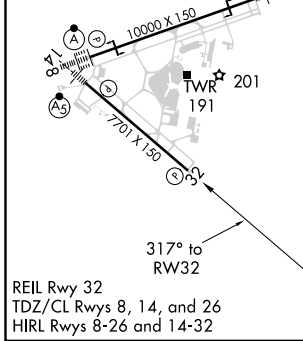
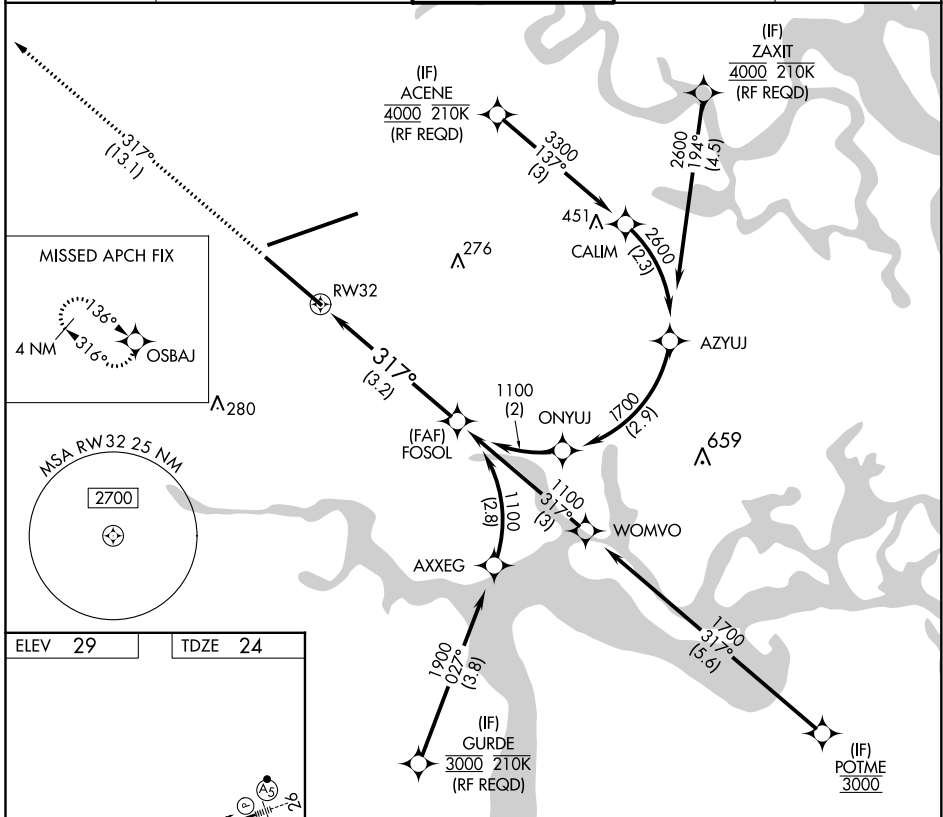


APP CRS	Rwy Idg	<b>7701</b>
<b>317°</b>	TDZE	<b>24</b>
	Apt Elev	<b>29</b>

# RNAV (RNP) Y RWY 32

JACKSONVILLE INTL (JAX)

<p>▼ For uncompensated Baro-VNAV systems, procedure NA below -5°C (23°F) or above 54°C (130°F). GPS required.</p>		<p>MISSED APPROACH: Climb to 2000 on track 317° to OSBAJ and hold.</p>		
D-ATIS	JACKSONVILLE APP CON	JACKSONVILLE TOWER	GND CON	CLNC DEL
<b>125.85</b>	<b>119.0 269.9</b>	<b>118.3 317.7</b>	<b>121.9 348.6</b>	<b>119.5 290.275</b>



CATEGORY	A	B	C	D
RNP 0.11 DA		359-1 1/8	334 (400-1 1/8)	
RNP 0.30 DA		423-1 1/8	399 (400-1 1/8)	

**AUTHORIZATION REQUIRED**

SE-3, 25 FEB 2021 to 25 MAR 2021

SE-3, 25 FEB 2021 to 25 MAR 2021