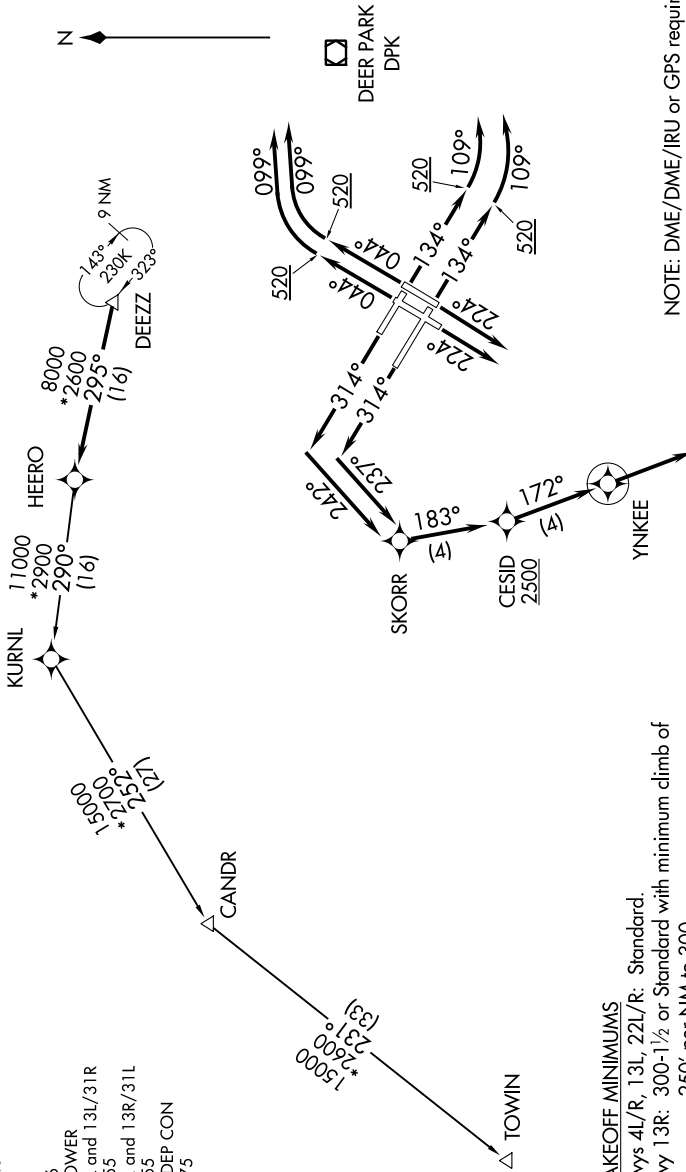


# DEZZ FIVE DEPARTURE (RNAV)

NE-2, 25 FEB 2021 to 25 MAR 2021

D-ATIS 128.725  
CLNC DEL 135.05 348.6  
CPDIC  
GND CON 121.9 348.6  
KENNEDY TOWER  
Rwys 4R/22L and 13L/31R 119.1 281.55  
Rwys 4L/22R and 13R/31L 123.9 281.55  
NEW YORK DEP CON 135.9 353.75

**TOP ALTITUDE:  
5000**



**TAKEOFF MINIMUMS**

Rwys 4L/R, 13L, 22L/R: Standard.  
Rwy 13R: 300-1/2 or Standard with minimum climb of 250' per NM to 300.  
Rwys 31L/R: Standard with minimum climb of 500' per NM to 1400.

NOTE: DME/DME/IRU or GPS required.  
NOTE: Radar Required.  
NOTE: RNAV 1.  
NOTE: TOWIN transition ATC assigned only.

(NARRATIVE ON FOLLOWING PAGE)

NOTE: Chart not to scale.

NE-2, 25 FEB 2021 to 25 MAR 2021