

LOC/DME I-TLK 111.5 Chan 52	APP CRS 134°	Rwy ldg 9093 TDZE 13 Apt Elev 13
---	------------------------	---

ILS RWY 13L (CAT II)

JOHN F KENNEDY INTL (JFK)

RNAV 1-GPS or RADAR required for procedure entry.

ALSF-2

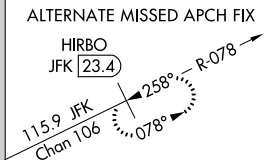
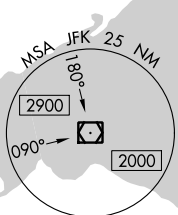
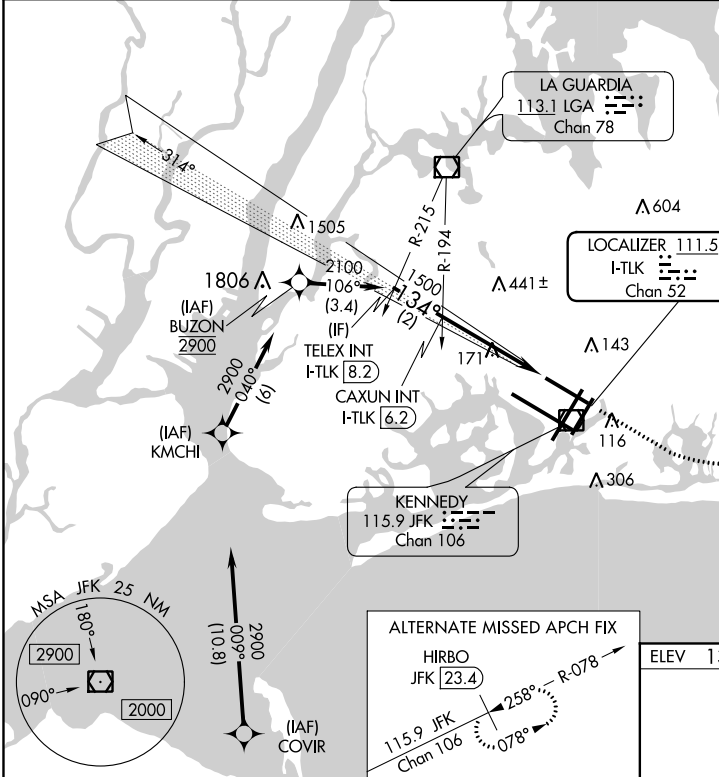
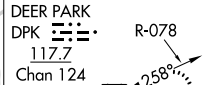
MISSED APPROACH: Climb to 600 then climbing left turn to 4000 direct DPK VOR/DME and hold.

From COVIR, KMCHI, BUZON: RNAV-1 GPS required.

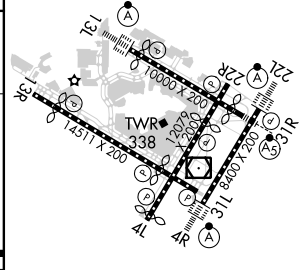
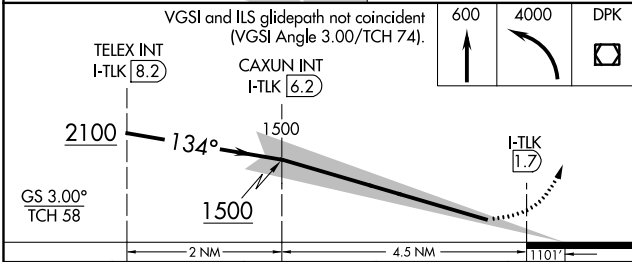


D-ATIS (ARR/DEP) (ARR-NE) (ARR-SW) 128.725 117.7 115.4	NEW YORK APP CON 128.125 269.0	KENNEDY TOWER Rwys 4R/22L and 13L/31R 119.1 281.55 Rwys 4L/22R and 13R/31L 123.9 281.55	GND CON 121.9 135.05 348.6	CLNC DEL 135.05 348.6	CPDLC
---	--	---	--------------------------------------	---------------------------------	-------

MISSED APCH FIX



ELEV 13	D	TDZE 13
---------	----------	---------



CATEGORY	A	B	C	D
S-ILS 13L	RA 150/16 150 DA 163			

CATEGORY II ILS - SPECIAL AIRCREW & AIRCRAFT CERTIFICATION REQUIRED

REIL Rwy 4L
RLLS Rwys 13L and 13R
HIRL all Rwys
TDZ/CL Rwys 4L, 4R, 13L, 22L and 31R

NE-2, 25 FEB 2021 to 25 MAR 2021

NE-2, 25 FEB 2021 to 25 MAR 2021