

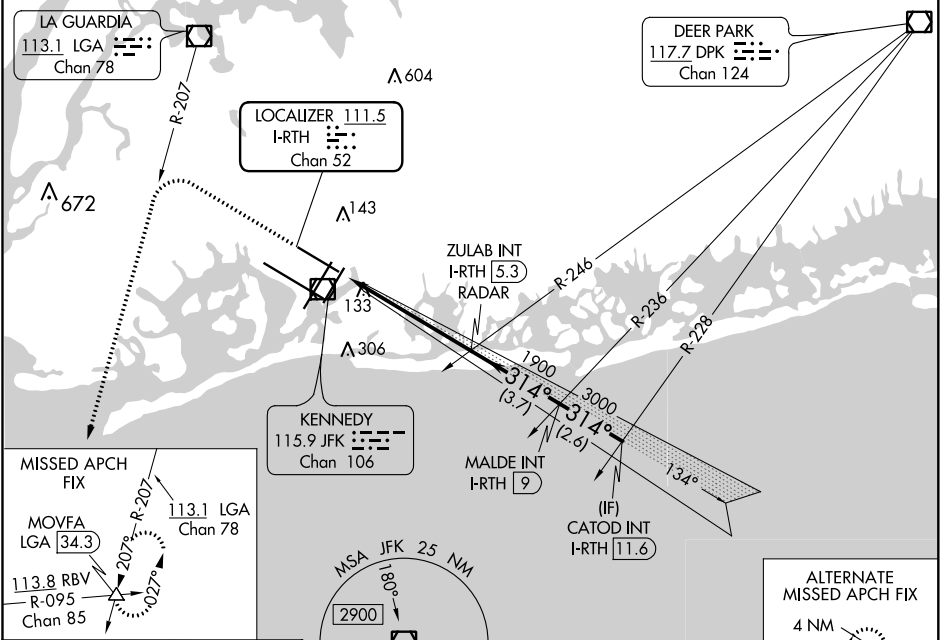
# ILS or LOC RWY 31R

JOHN F KENNEDY INTL (JFK)

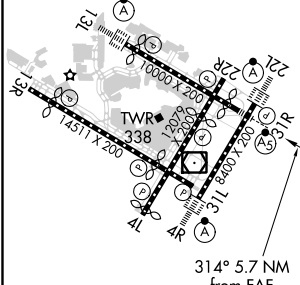
LOC/DME I-RTH <b>111.5</b> Chan 52	APP CRS <b>314°</b>	Rwy Idg <b>8486</b> TDZE <b>13</b> Apt Elev <b>13</b>
--	------------------------	---

RADAR required for procedure entry.		MALSR 	MISSED APPROACH: Climb to 1800 then climbing left turn to 4000 on LGA VOR/DME then climb to MOVFA INT/LGA 34.3 DME and hold.
Simultaneous approach authorized.			

D-ATIS (ARR/DEP) (ARR-NE) (ARR-SW) <b>128.725 117.7 115.4</b>	NEW YORK APP CON <b>128.125 269.0</b>	KENNEDY TOWER Rwys 4R/22L and 13L/31R <b>119.1 281.55</b> Rwys 4L/22R and 13R/31L <b>123.9 281.55</b>	GND CON <b>121.9 135.05 348.6</b>	CLNC DEL <b>135.05 348.6</b>	CPDLC
---	--	---	--------------------------------------	---------------------------------	-------



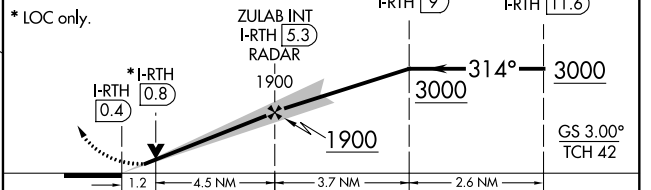
ELEV 13	<b>D</b>	TDZE 13
---------	----------	---------



REIL Rwy 4L  
RILS Rwys 13L and 13R  
HIRL all Rwys  
TDZ/CL Rwys 4L, 4R, 13L, 22L and 31R  
FAF to MAP 5.7 NM

Knots	60	90	120	150	180
Min:Sec	5:42	3:48	2:51	2:17	1:54

1800	4000	LGA R-207	MOVFA $\Delta$	VGSI and ILS glidepath not coincident (VGSI Angle 3.00°/TCH 54).
------	------	-----------	----------------	--



CATEGORY	A	B	C	D
S-ILS 31R	212/18 200 (200-½)			
S-LOC 31R	440/24	428 (500-½)	440/40	428 (500-¾)
<input checked="" type="checkbox"/> CIRCLING	640-1	627 (700-1)	680-1¾ 667 (700-1¾)	680-2 667 (700-2)

NE-2, 25 FEB 2021 to 25 MAR 2021

NE-2, 25 FEB 2021 to 25 MAR 2021